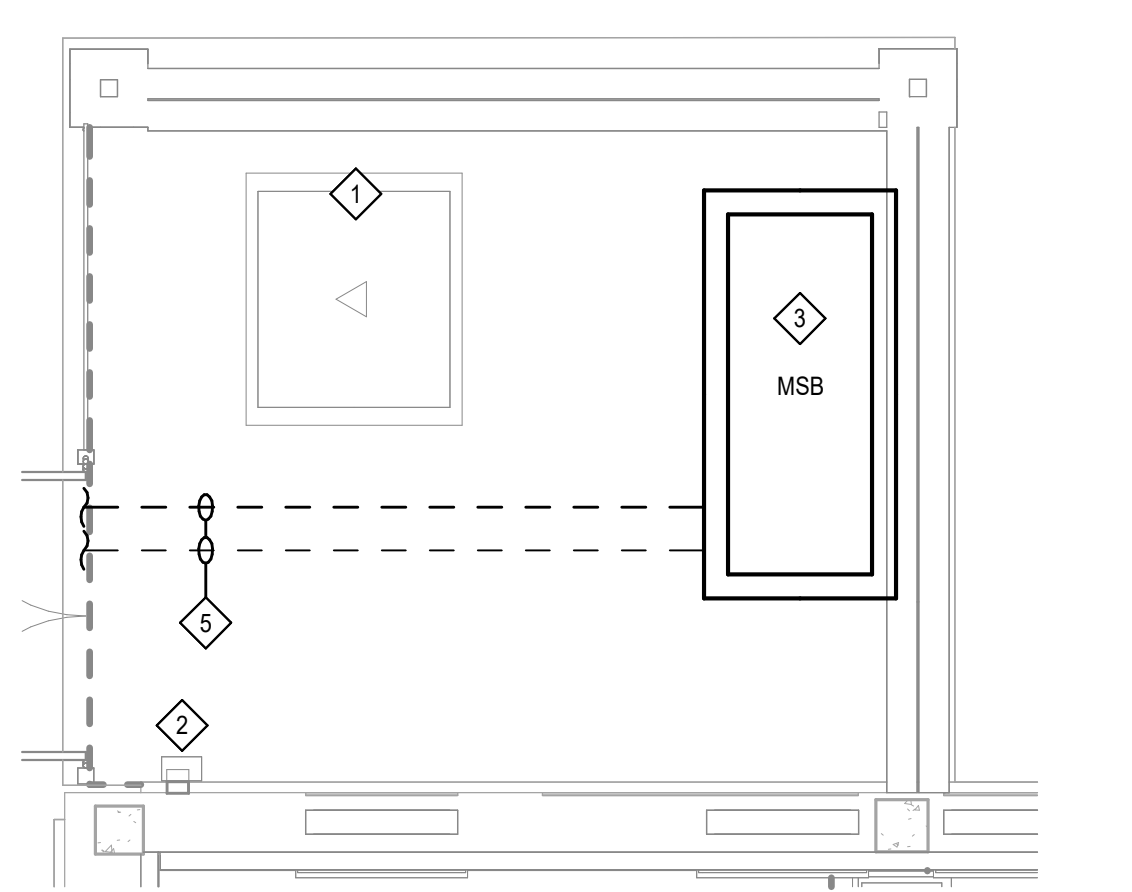
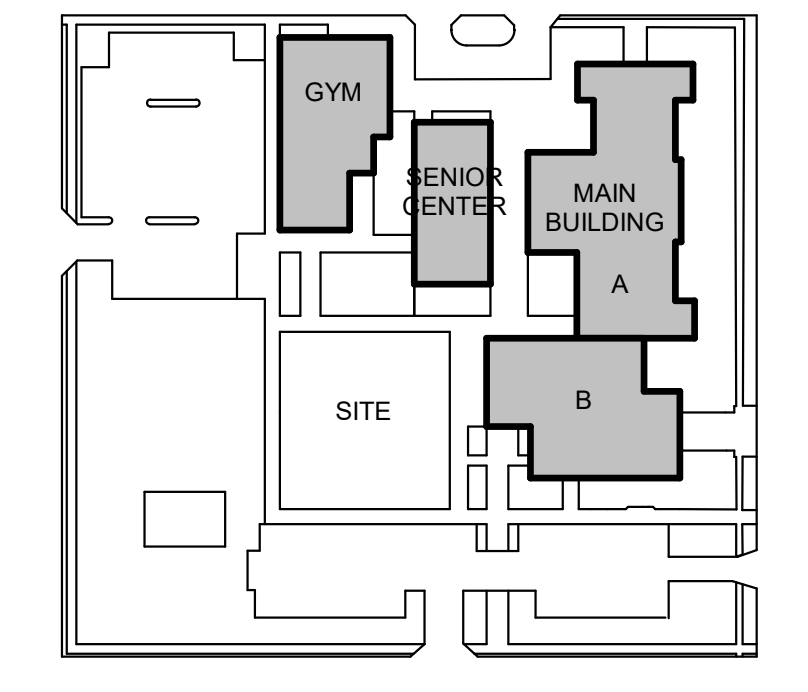


- ELECTRICAL KEYED NOTES:**
- EXISTING SERVICE TRANSFORMER.
 - EXISTING SERVICE METER.
 - NEW SWITCHBOARD "MSB". REFER TO E401 ONE-LINE DIAGRAM FOR DETAILS.
 - EXISTING BUILDING TO REMAIN. NOT IN CONTRACT.
 - PROVIDE CONDUIT FROM NEW SWITCHBOARD TO EXISTING BUILDING FOR FUTURE WORK. TERMINATE CONDUIT IN A 24"X24"X24" TIER 15 PEDESTAL RATED IN GROUND PULL BOX IN A CONVENIENT LOCATION IN THE EXTERIOR OF BUILDING. THE COVER SHALL BE LABELED "ELECTRICAL". VERIFY PULL BOX LOCATION WITH OWNER PRIOR TO ROUGH-IN. REFER TO 7/E602 FOR DETAILS. MARK CONDUIT AS AN SPARE AND PROVIDE CONDUIT WITH MULE TAPE. REFER TO ONE LINE DIAGRAM FOR CONDUIT SIZE.
 - CIRCUIT TO BE ROUTED THROUGH LIGHTING RELAY PANEL. REFER TO LIGHTING CONTROL WIRING DIAGRAM ON E601 FOR MORE INFORMATION.
 - SLIDING GATE OPERATOR. PROVIDE (2) - 2" CONDUIT WITH (2) - #10 AND (1) - #10 GROUND TO GATE OPERATOR. PROVIDE GATE OPERATOR WITH A WEATHER PROOF MOTOR RATED TOGGLE SWITCH IN A NEMA 3R JUNCTION BOX. MOTOR RATED SWITCHES SHALL BE LOCATED 4'-6" AWAY FROM THE GATE OPERATOR AND AT A MINIMUM HEIGHT OF 2'. COORDINATE FINAL LOCATION WITH EQUIPMENT INSTALLER. THE CONTRACTOR SHALL COORDINATE WITH OWNER FOR THE INSTALLATION OF A KEY SWITCH AT EACH GATE OPERATOR FOR MANUAL OVERRIDE. ALL ELECTRICAL WORK RELATED TO MOTORIZED GATE SHALL BE PART OF ALTERNATE 5.
 - PROVIDE (1) 1" CONDUIT FROM GATE OPERATOR, STUBBED INTO DRIVE FOR OBSTRUCTION LOOP AND EXIT LOOP.
 - PROVIDE (1) 1" CONDUIT FROM GATE OPERATOR IRB TRANSMITTER.
 - EXISTING CPSE POLE TO REMAIN
 - EXISTING OVERHEAD AERIAL PRIMARY TO REMAIN.
 - PROVIDE A 24" X 24" X 24" TIER 15 PEDESTAL RATED IN-GROUND PULL BOX. THE COVER SHALL BE LABELED "ELECTRICAL". VERIFY PULL BOX LOCATION WITH OWNER PRIOR TO ROUGH-IN. REFER TO 6/E601 FOR DETAILS
 - POLE MOUNTED LIGHT FIXTURE. VERIFY LOCATION WITH LANDSCAPING DRAWINGS. REFER TO S/E601 FOR POLE BASE DETAIL.
 - JUNCTION BOX FOR IRRIGATION CONTROLLER. VERIFY LOCATION WITH LANDSCAPING DRAWINGS.
 - JUNCTION BOX FOR TREE LIGHTING. VERIFY LOCATION WITH LANDSCAPING DRAWINGS.
 - PROVIDE (1) 2" CONDUIT FROM NEW FIRE ALARM CONTROL PANEL TO EXISTING BUILDING "GYM" AND TO EXISTING BUILDING "SENIOR CENTER" FOR FUTURE FIRE ALARM EXPANSION. TERMINATE CONDUIT IN A 24"X24"X24" TIER 15 PEDESTAL RATED IN GROUND PULL BOX IN A CONVENIENT LOCATION IN THE EXTERIOR OF BUILDING. THE COVER SHALL BE LABELED "FIRE ALARM". VERIFY PULL BOX LOCATION WITH OWNER PRIOR TO ROUGH-IN. REFER TO 7/E602 FOR DETAILS. MARK CONDUIT AS AN SPARE AND PROVIDE CONDUIT WITH MULE TAPE
 - PEDESTAL FOR FOOD TRUCK. PROVIDE A FOOD TRUCK PEDESTAL WITH (1) NEMA 14-50R RECEPTACLE AND (1) NEMA 14-30R RECEPTACLE. PEDESTAL SHALL BE WEATHERPROOF, NEMA 3R, WITH LOCKABLE HINGED IN USE COVER. CONFIRM LOCATION AND FINAL FINISH WITH ARCHITECT BEFORE ORDERING. BASE OF DESIGN: LEGRAND XPP1G30C.
 - OUTDOOR CHARGING STATION. PROVIDE A CHARGING STATION PEDESTAL WITH A TWO-GANG POWER MODULE INCLUDING A GFCI RECEPTACLE. PEDESTAL SHALL BE WEATHERPROOF, NEMA 3R, WITH LOCKABLE HINGED IN USE COVER. CONFIRM LOCATION AND FINAL FINISH WITH ARCHITECT BEFORE ORDERING. BASE OF DESIGN: LEGRAND XPP1G16C.

3 ENLARGED PARKING LOT GATE
E001 1/8" = 1'-0"



2 ENLARGED ELECTRICAL YARD
E001 1/4" = 1'-0"



1 ELECTRICAL SITE PLAN
E001 1/16" = 1'-0"

PRELIMINARY REVIEW SET
NOT FOR REGULATORY APPROVAL, PERMITTING, OR CONSTRUCTION
AMBER GASS
P.E. REG. NO. 95675
04/30/2026

REVISIONS

Mark	Description	Date
2	Addendum #2	03/23/26

WEDG PROJECT NO.: 23120
CLIENT PROJECT NO: 220830c2

ELECTRICAL SITE PLAN

SHEET
E001