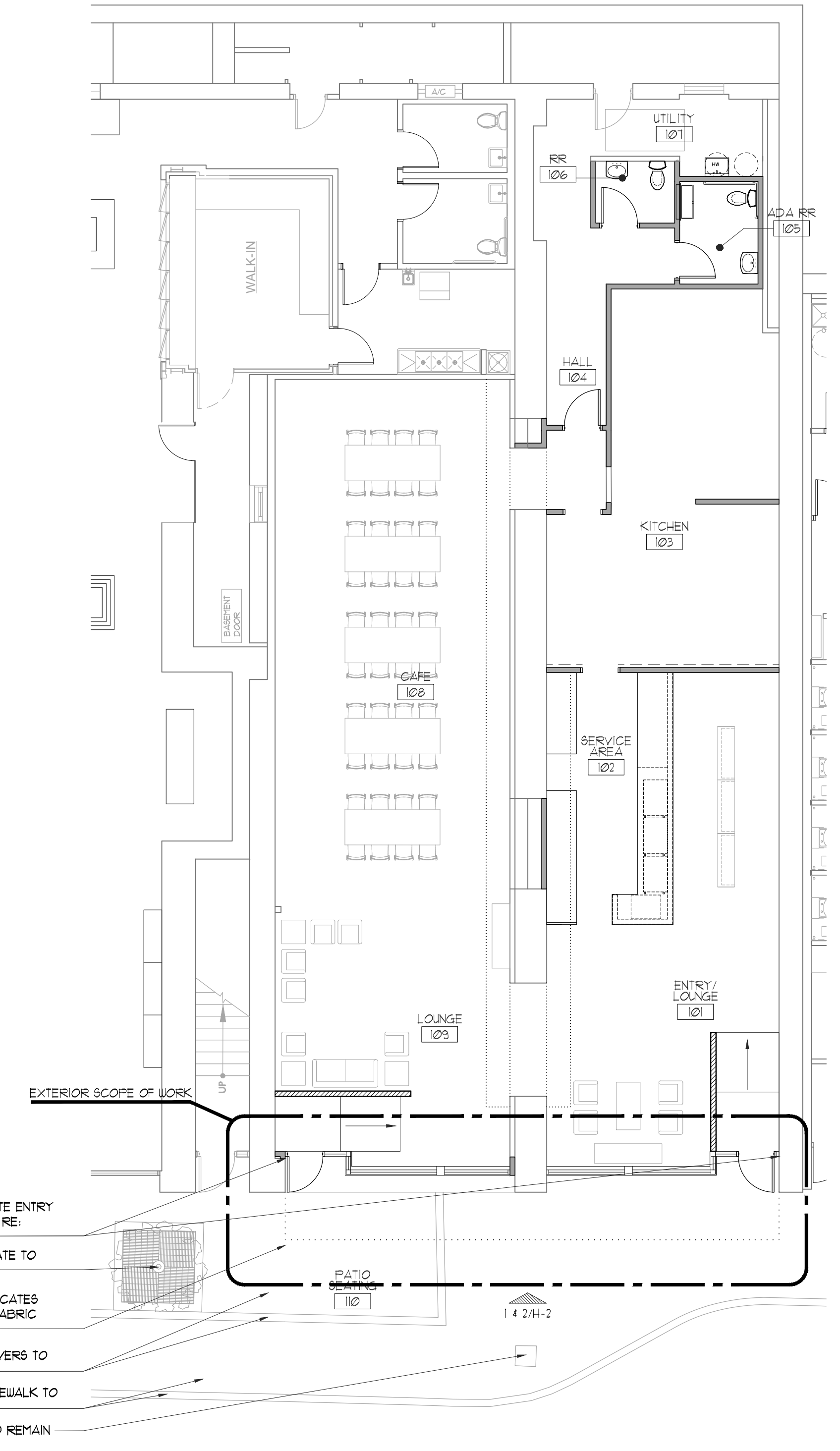


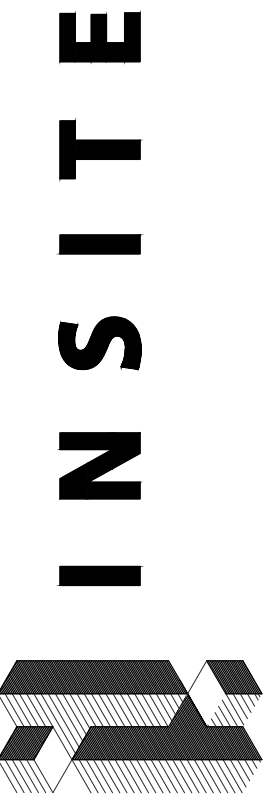
1 SITE PLAN
SCALE: 1/16" = 1'-0"
TRUE NORTH



RELOCATED TENANT SUITE ENTRY OFF E HOUSTON STREET, RE: ELEVATIONS
EXISTING TREE AND GRATE TO REMAIN
DOT-DOT-DOT LINE INDICATES EDGE OF NEW PREFAB FABRIC AWNING ABOVE
EXISTING CURB AND PAVERS TO REMAIN
EXISTING CURB AND SIDEWALK TO REMAIN
EXISTING LIGHT POLE TO REMAIN

2 FLOOR PLAN: PROPOSED
SCALE: 1/8" = 1'-0"
TRUE NORTH

1 6 3 3
BROADWAY
SHEETS
7 8 2 1 5



CAFE CONCEPT
SAVOY BUILDING
116 E HOUSTON ST
SAN ANTONIO, TX 78205

DRAWN BY: JG/ EV

DATE:
REVIEW: 11/28/2023
PERMIT SET: 12/01/2023

REVISED:
HDC REVIEW: 12/11/23

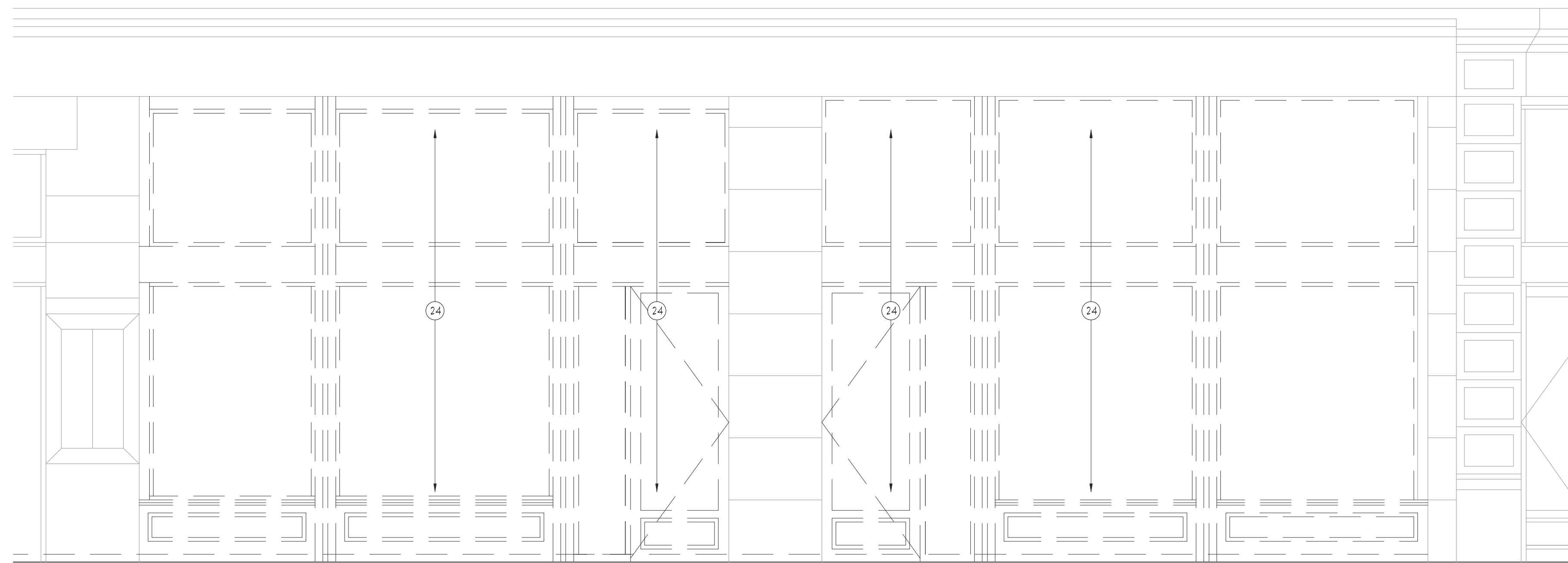
THESE DRAWINGS ARE FOR PRICING COORDINATION, OR REVIEW ONLY. NOT FOR REGULATORY APPROVAL, PERMITTING OR CONSTRUCTION.

INTERIOR DESIGNER
DAVID FROSCH
TX REG. #10399
INSITE DESIGN

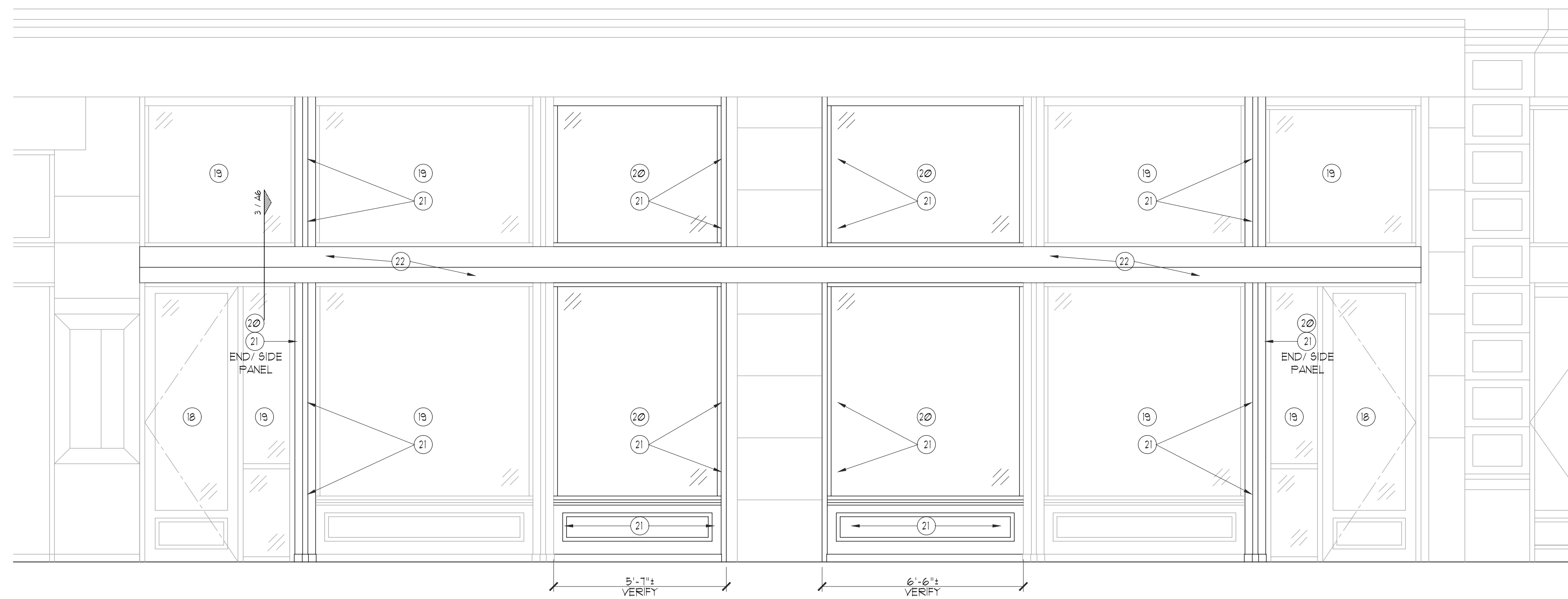
SHEET TITLE:
HDC REVIEW: PLANS & DETAILS

SHEET:

H-1



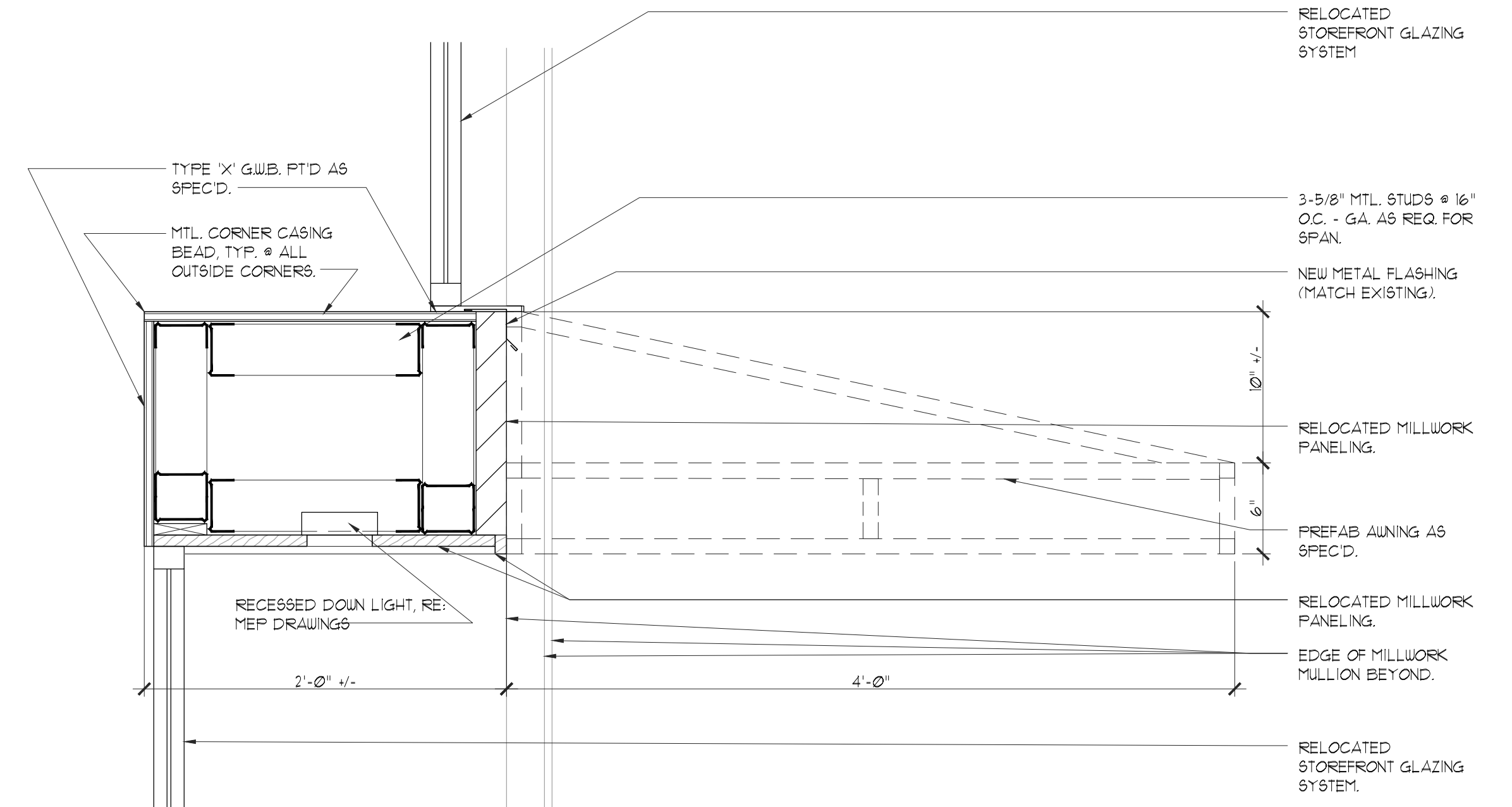
1 ELEV: EXISTING EXTERIOR STOREFRONT
SCALE: 3/8" = 1'-0"



2 ELEV: EXTERIOR STOREFRONT
SCALE: 3/8" = 1'-0"

ELEVATION KEYED NOTES

- 18 RELOCATED STOREFRONT ENTRY DOOR
- 19 RELOCATED STOREFRONT GLAZING SYSTEM
- 20 INFILL STOREFRONT GLAZING SYSTEM TO MATCH EXISTING. REUSE HISTORICAL PTD, MILLWORK PANELING WHERE POSSIBLE. PROVIDE NEW AS REQ. REPAIR, SERVICE, AND REPAINT ENTIRE UNIT.
- 21 NEW PREFAB. FABRIC SHADE AWNING WITH DROPPED VALENCE AS SPEC'D. RE: RCP.
- 22 CABINET AIR GRILLS BY TENANT'S EQUIPMENT VENDOR. INSTALLED BY GC. COORDINATE WITH MFR. RIGHTS.
- 23 SALVAGE STOREFRONT FOR REUSE.



MATCH ALL MATERIALS AND DIMENSIONS TO EXISTING EXTERIOR STOREFRONT GLAZING SYSTEM. ALL MILLWORK COMPONENTS, NEW AND REUSED, ARE TO BE PAINTED TO MATCH EXISTING.

3 DETAIL @ SOFFIT
SCALE: 1-1/2" = 1'-0"



4 AWNING CONCEPT IMAGES
SCALE: N.T.S.

1 6 3 3
BROADWAY
SHEETS
7 8 2 1 5

INSITE

CAFE CONCEPT
SAVOY BUILDING
116 E HOUSTON ST
SAN ANTONIO, TX 78205

DRAWN BY: JG/ EV

DATE:
REVIEW: 11/28/2023
PERMIT SET: 12/01/2023

REVISED:
HDC REVIEW: 12/11/23

THESE DRAWINGS
ARE FOR PRICING
COORDINATION, OR
REVIEW ONLY. NOT
FOR REGULATORY
APPROVAL, PERMITTING
OR CONSTRUCTION.

INTERIOR DESIGNER
DAVID FROSCH
TX. REG. #10399
INSITE DESIGN

SHEET TITLE:
HDC REVIEW: PLANS &
DETAILS

SHEET:

H-2