

AERIAL VIEW LOOKING WEST

HDR-1 **SITE PLAN**
MEIN EYE INSTITUTE (BLDG. 175)
 SCALE: 1" = 40'-0"
 05/18/26 PROJECT NO: 25055

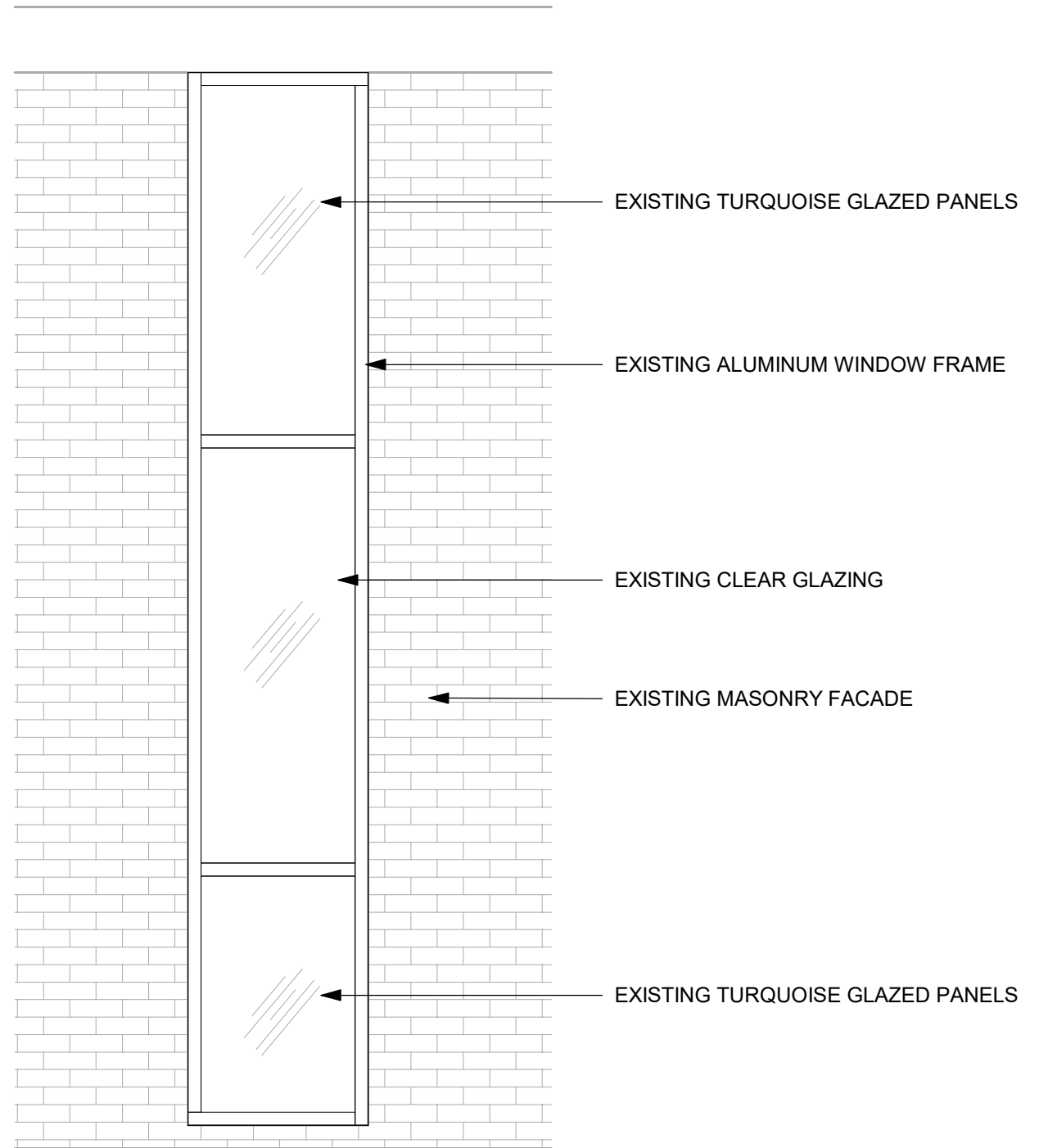
LUNA ARCHITECTURE
 16403 Huebner Road, San Antonio, TX 78248 · Tel. 210.340.2400 · lunaarchitecture.com
 © 2024 Luna Architecture. Reproduction without written permission is prohibited.



01-VIEW LOOKING SOUTH



02 - MAIN ENTRANCE



D



EXISTING TURQUOISE ANODIZED ALUMINUM WINDOW

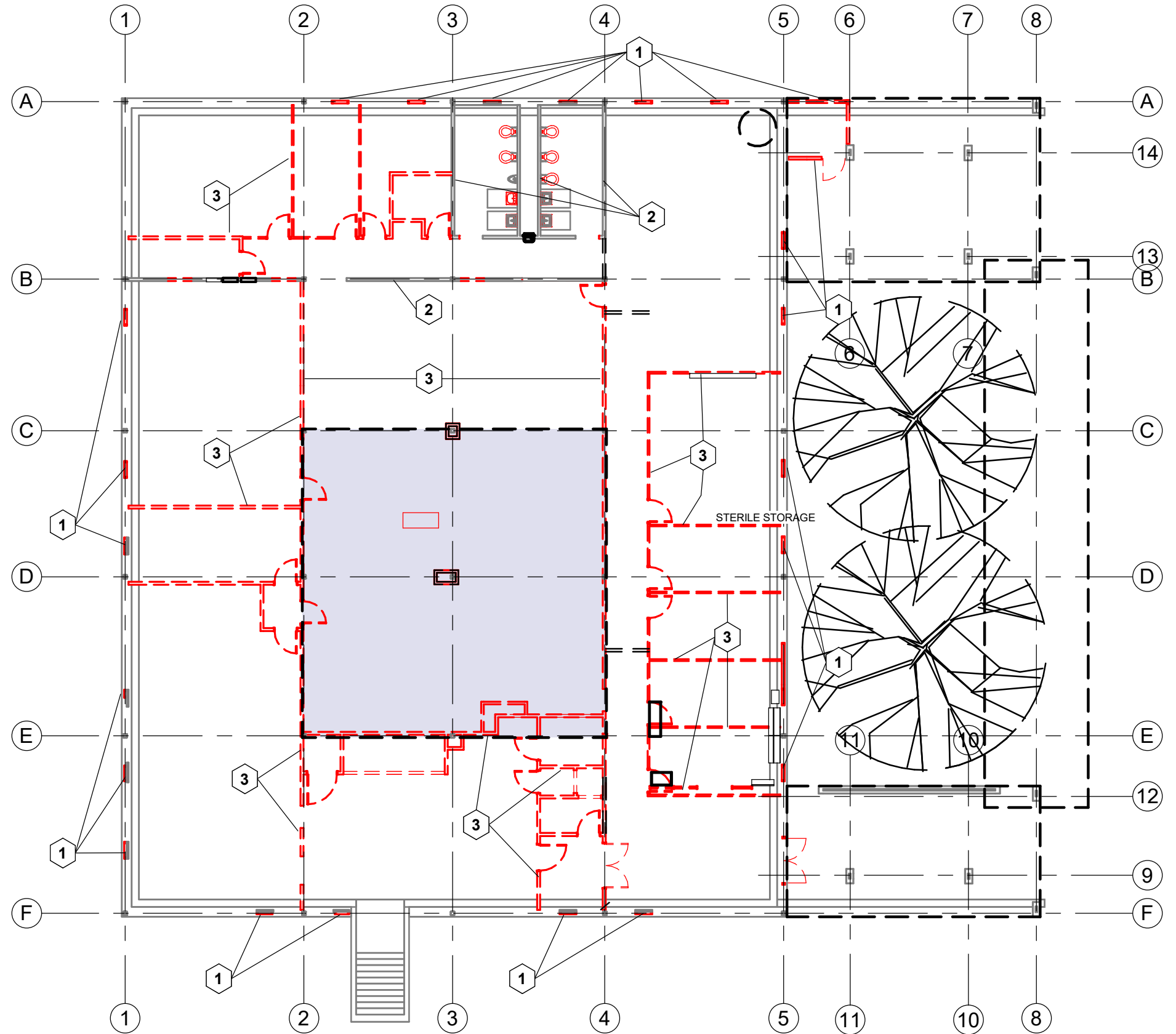
(6)

DEMOLITION PLAN KEY NOTES:

- ① DEMO STOREFRONT GLAZING ASSEMBLY.
- ② WALLS TO REMAIN
- ③ DEMO PARTITION

DEMOLITION PLAN LEGEND

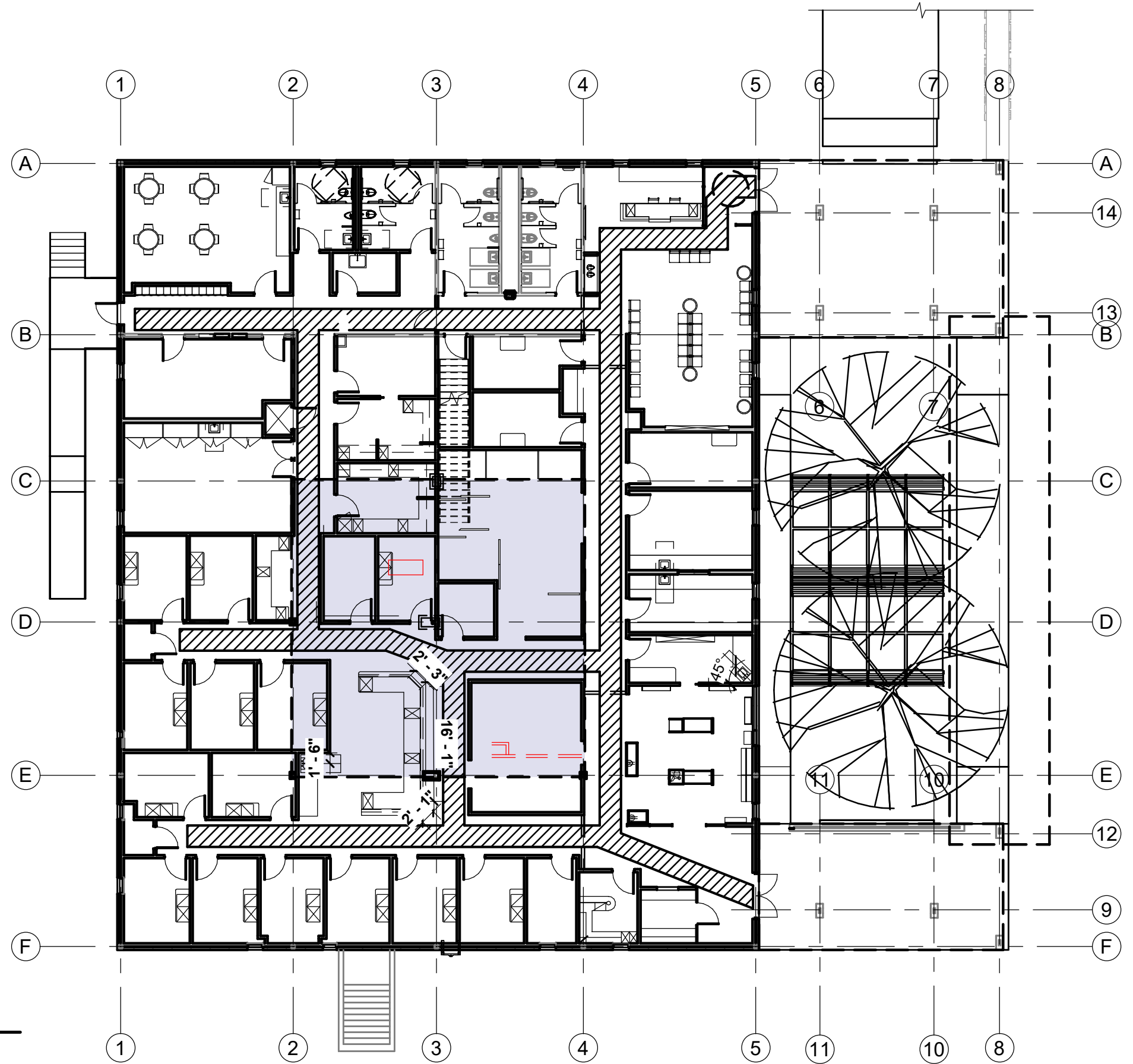
-  EXISTING CONSTRUCTION TO REMAIN
-  EXISTING CONSTRUCTION TO BE REMOVED



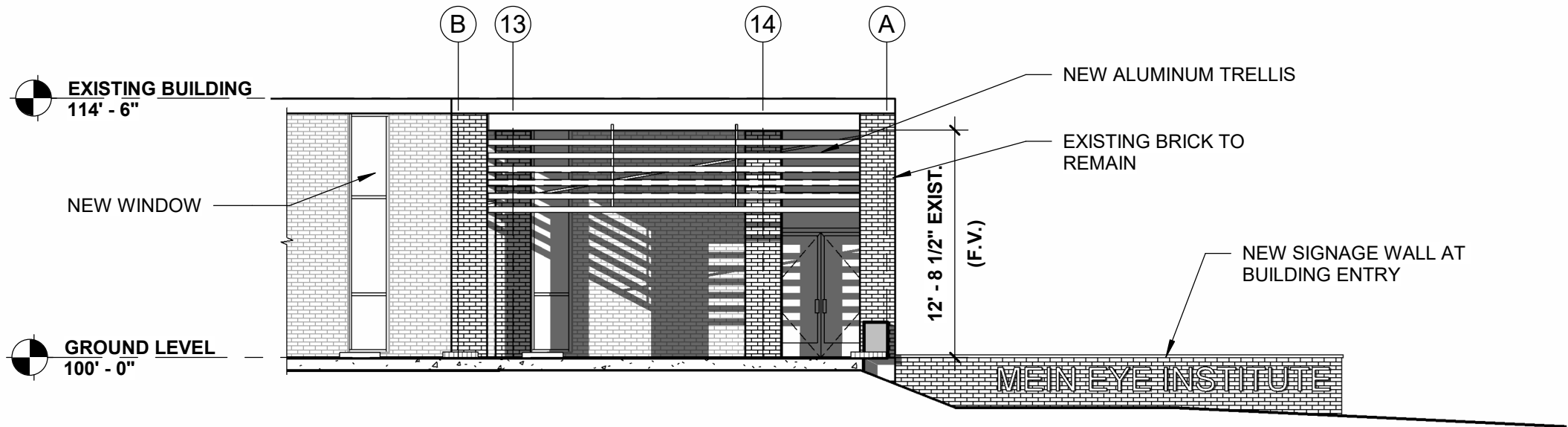
1 DEMO FLOOR PLAN
 HDR-3 SCALE: 1/16" = 1'-0"

PROPOSED PLAN GENERAL NOTES

PROPOSED WORK INCLUDES NEW INTERIOR PARTITIONS, REPLACEMENT WINDOW SYSTEMS, EXTERIOR PANEL INSTALLATION, AND ASSOCIATED FINISH IMPROVEMENTS AS INDICATED.



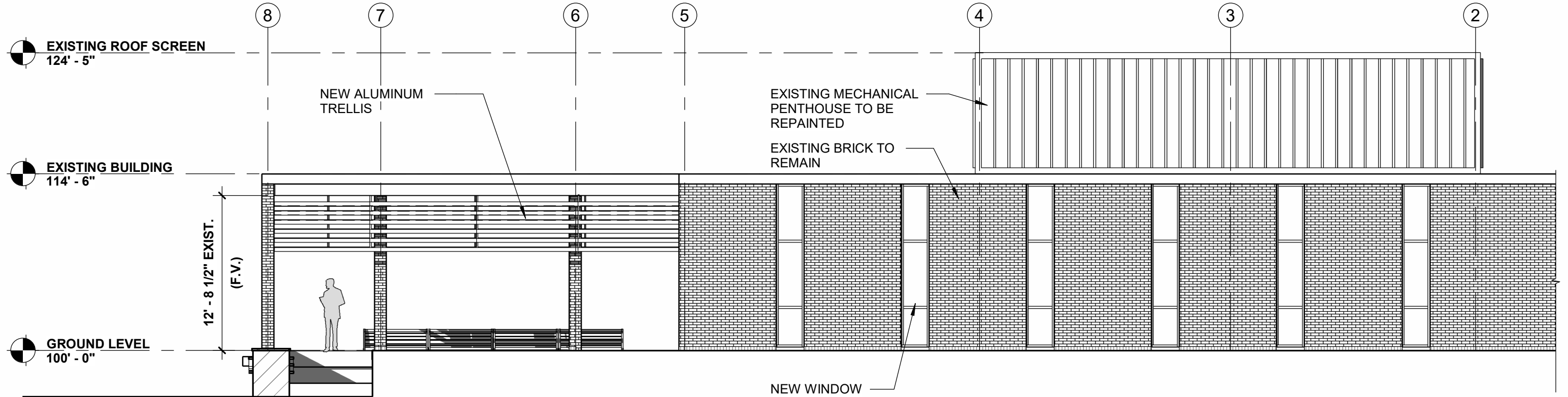
1 **PROPOSED FLOOR PLAN**
 HDR-4 SCALE: 1/16" = 1'-0"



GENERAL NOTES

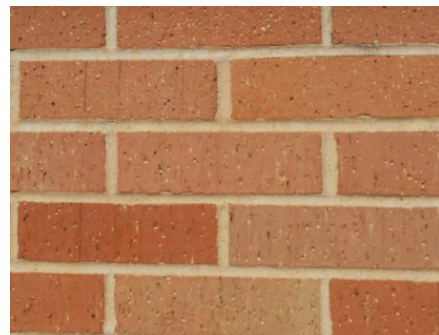
PROPOSED WORK CONSISTS OF NEW INTERIOR CONSTRUCTION, REPLACEMENT WINDOW SYSTEMS, EXTERIOR FAÇADE ENHANCEMENTS, AND CONSTRUCTION OF A NEW SITE FEATURE WALL WITH INTEGRATED BUILDING SIGNAGE AS INDICATED.

1 EAST EXTERIOR ELEVATION
 HDR-5 SCALE: 1/8" = 1'-0"



2 NORTH EXTERIOR ELEVATION
 HDR-5 SCALE: 1/8" = 1'-0"

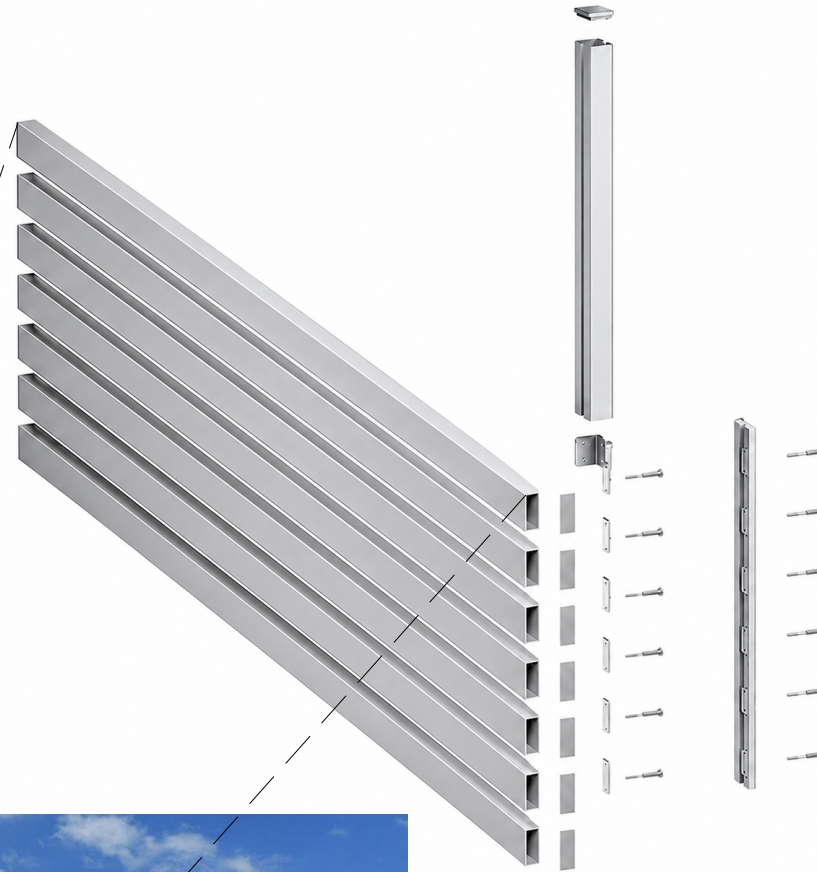
EXTERIOR MATERIALS & COLORS



EXISTING BRICK TO REMAIN



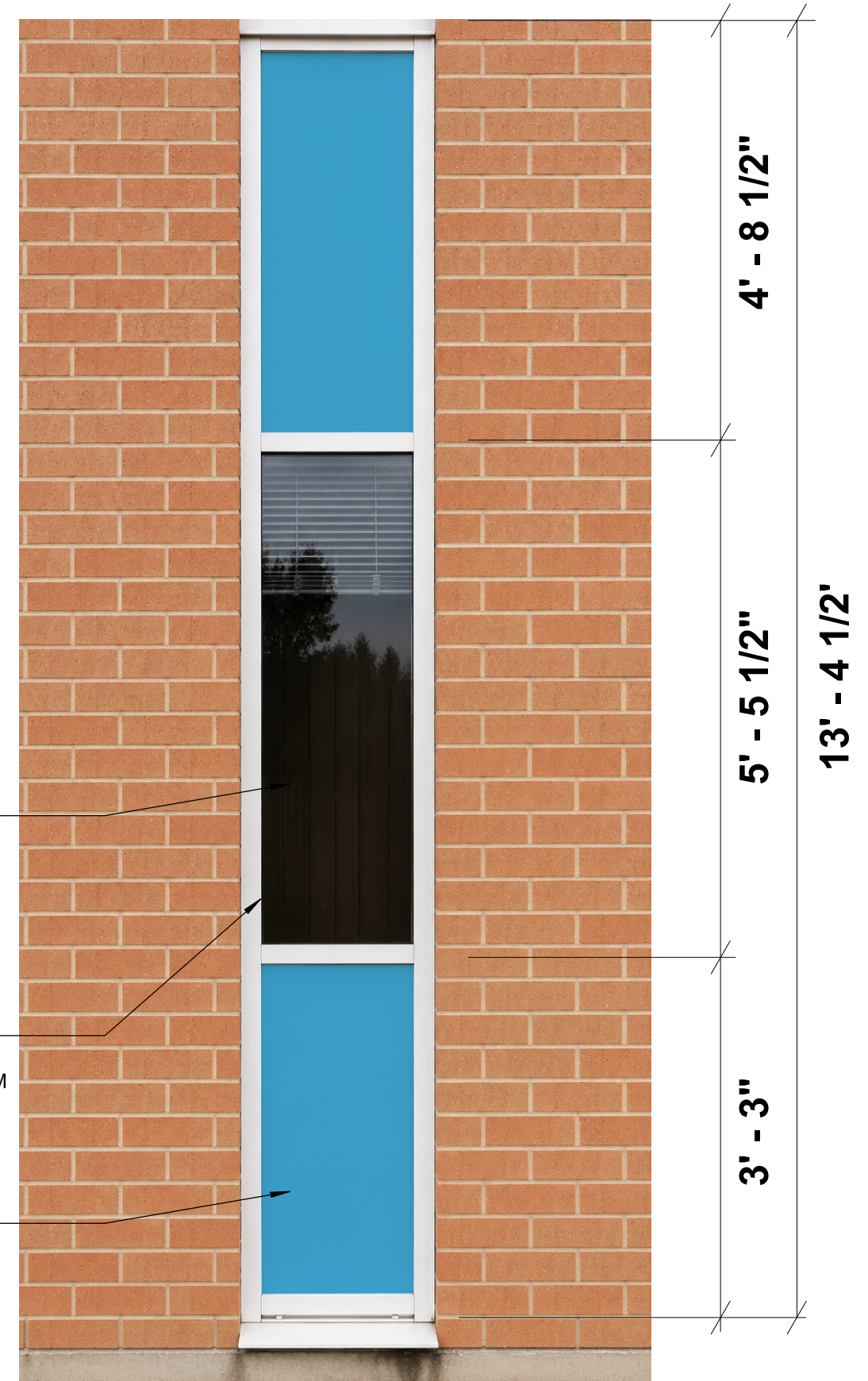
CLEAR ANODIZED ALUMINUM



NEW INSULATED TINTED GLAZING

NEW CLEAR ANODIZED ALUMINUM STOREFRONT SYSTEM

INSULATED SPANDREL GLAZING COLOR TO MATCH EXISTING



SIGNAGE/BAND MATERIALS & COLORS



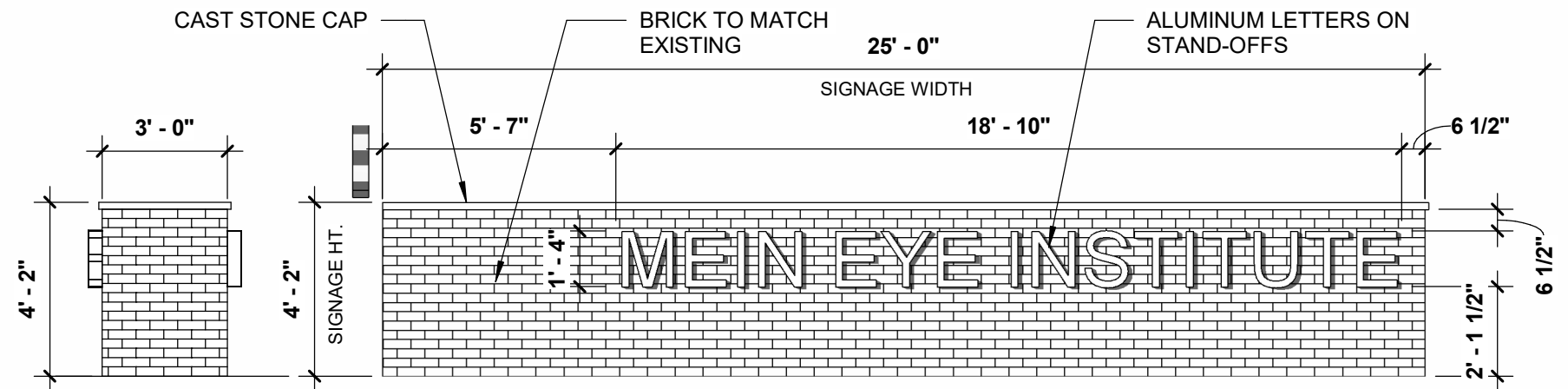
BRICK TO MATCH EXISTING



CLEAR ANODIZED ALUMINUM LETTERS



CAST STONE CAP



Gillingham Drive

REF. SHEET L1.2

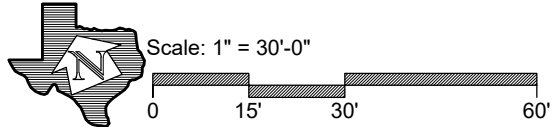
REF. SHEET L1.1

L1.0

HORIZON
DESIGN AND DEVELOPMENT
PLANNING LANDSCAPE ARCHITECTURE
DEVELOPMENT CONSULTING
16414 San Pedro Ave., Suite 630
San Antonio, Texas 78232
210.233.9650 jrobinson@horizondesign-sa.com

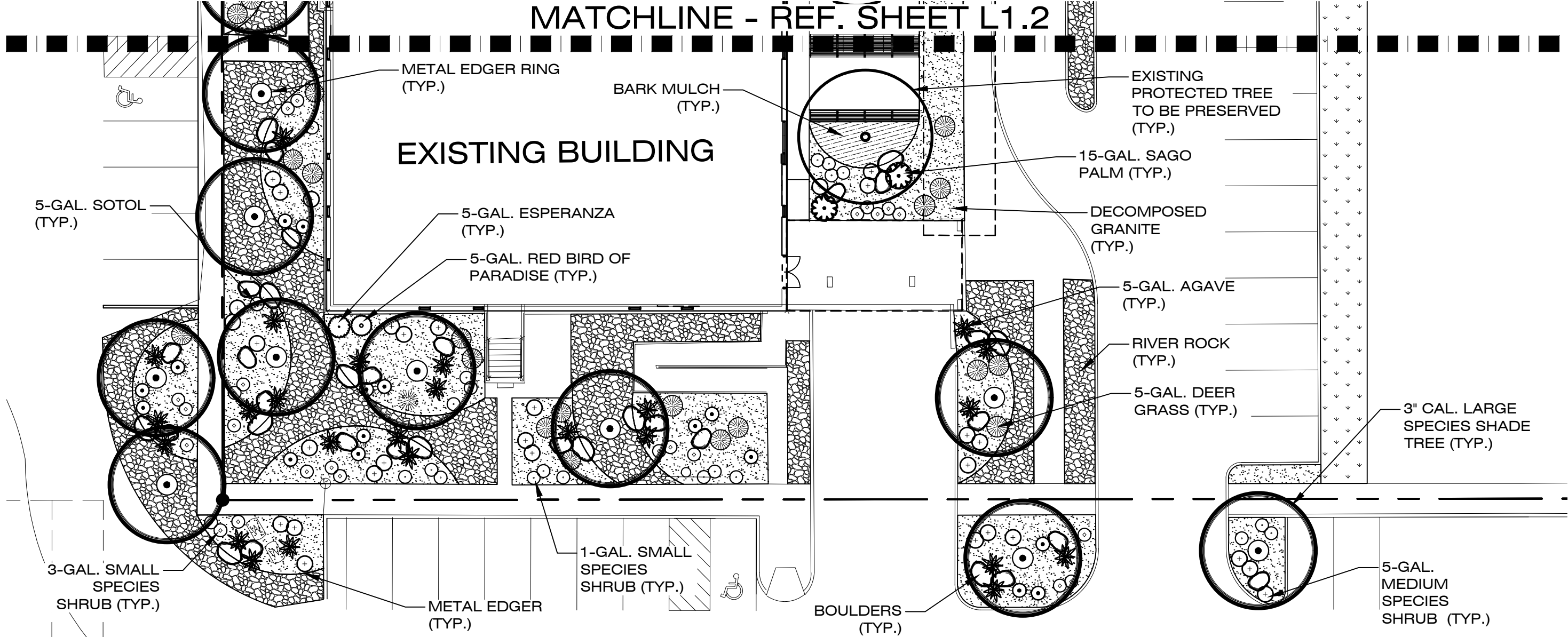
Mein Eye Institute

OVERALL LANDSCAPE PLANTING PLAN



San Antonio, Texas May 27, 2026

MATCHLINE - REF. SHEET L1.2

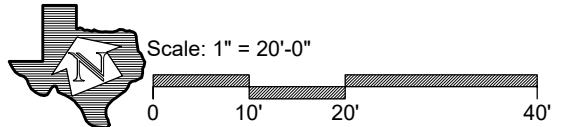


L1.1

HORIZON
 DESIGN AND DEVELOPMENT
 PLANNING LANDSCAPE ARCHITECTURE
 DEVELOPMENT CONSULTING
 16414 San Pedro Ave., Suite 630
 San Antonio, Texas 78232
 210.233.9650 jrobinson@horizondesign-sa.com

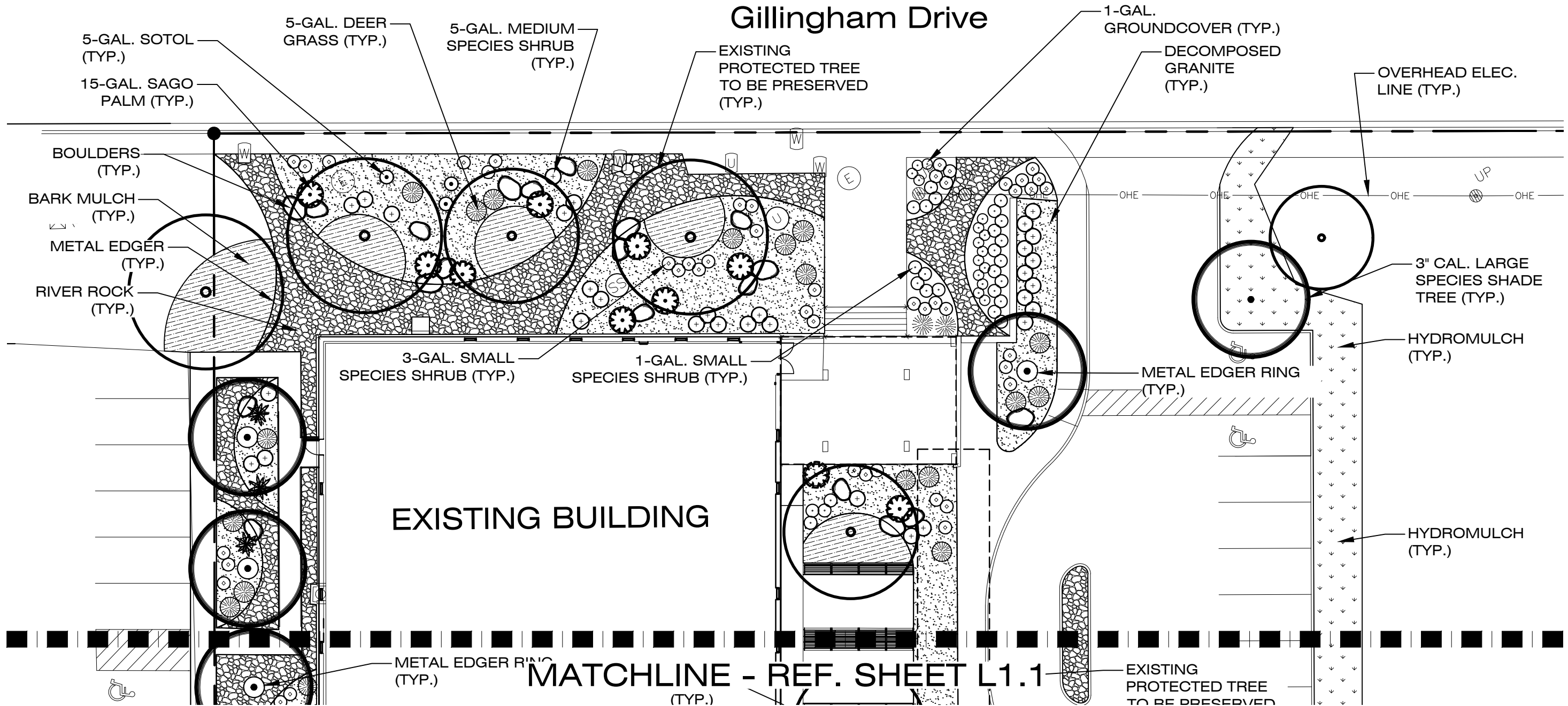
Mein Eye Institute

ENLARGED LANDSCAPE PLANTING PLAN



San Antonio, Texas May 27, 2026

Gillingham Drive

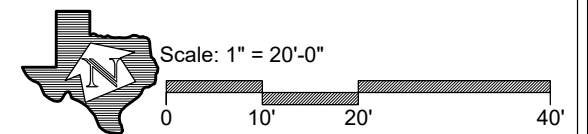


L1.2

HORIZON
 DESIGN AND DEVELOPMENT
 PLANNING LANDSCAPE ARCHITECTURE
 DEVELOPMENT CONSULTING
 16414 San Pedro Ave. Suite 630
 San Antonio, Texas 78232
 210.233.9650 jrobinson@horizondesign-sa.com

Mein Eye Institute

ENLARGED LANDSCAPE PLANTING PLAN



San Antonio, Texas May 27, 2026

LIVE OAK
Quercus virginiana



SHUMARD OAK
Quercus shumardii



MEXICAN SYCAMORE
Platanus mexicana



CEDAR ELM
Ulmus crassifolia



CENTURY PLANT
Agave americana



CAST IRON PLANT
Aspidistra elatior



AMERICAN BEAUTYBERRY
Callicarpa americana



RED BIRD OF PARADISE
Caesalpinia pulcherrima



HOLLY FERN
Cyrtomium falcatum



SAGO PALM
Cycas revoluta



SOTOL
Dasyilirion wheeleri



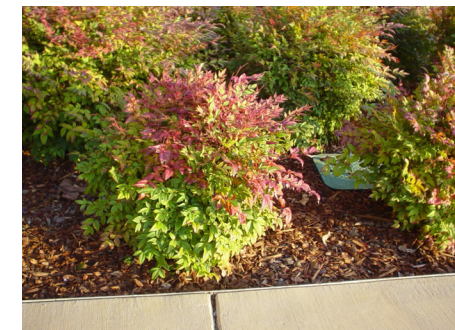
AZTEC GRASS
Liriope muscari 'Variegated Giant'



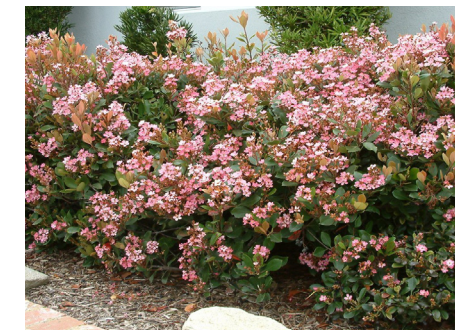
DEER GRASS
Muhlenbergia lindheimeri



'HARBOR DWARF' NANDINA
Nandina domestica 'Harbor Dwarf'



'SPRINGTIME' INDIAN HAWTHORN
Raphiolepis indica 'Springtime'



RED SALVIA
Salvia greggii



MEXICAN BUSH SAGE
Salvia leucantha



ESPERANZA
Tecoma stans

