



LAP SIDING - 4" REVEAL  
(ACTUAL COLOR NOT REPRESENTED)



BOARD & BATTEN  
(ACTUAL COLOR NOT REPRESENTED)



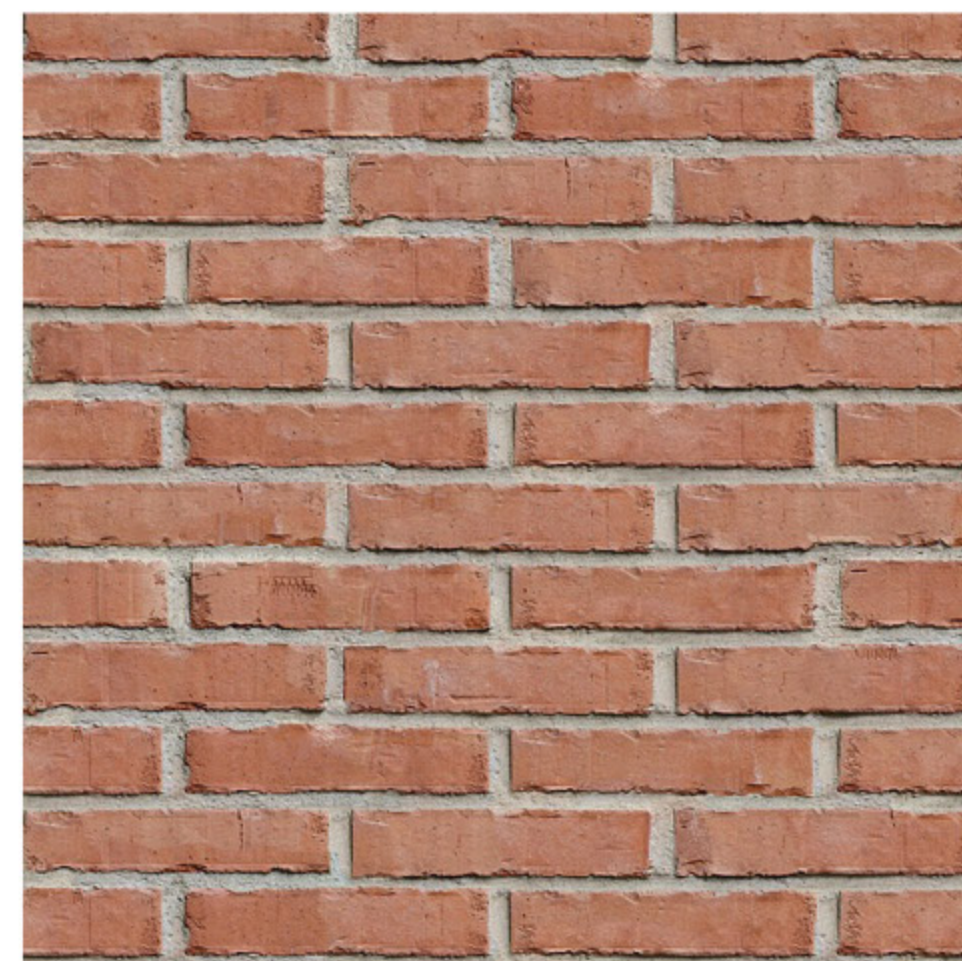
STUCCO - SMOOTH FINISH  
(ACTUAL COLOR NOT REPRESENTED)



STANDING SEAM METAL ROOF  
COLOR: RED



STONE - FLEMISH STYLE  
(CHOPPED LIMESTONE UNITS WITH  
"GERMAN SMEAR" MORTAR JOINTS)



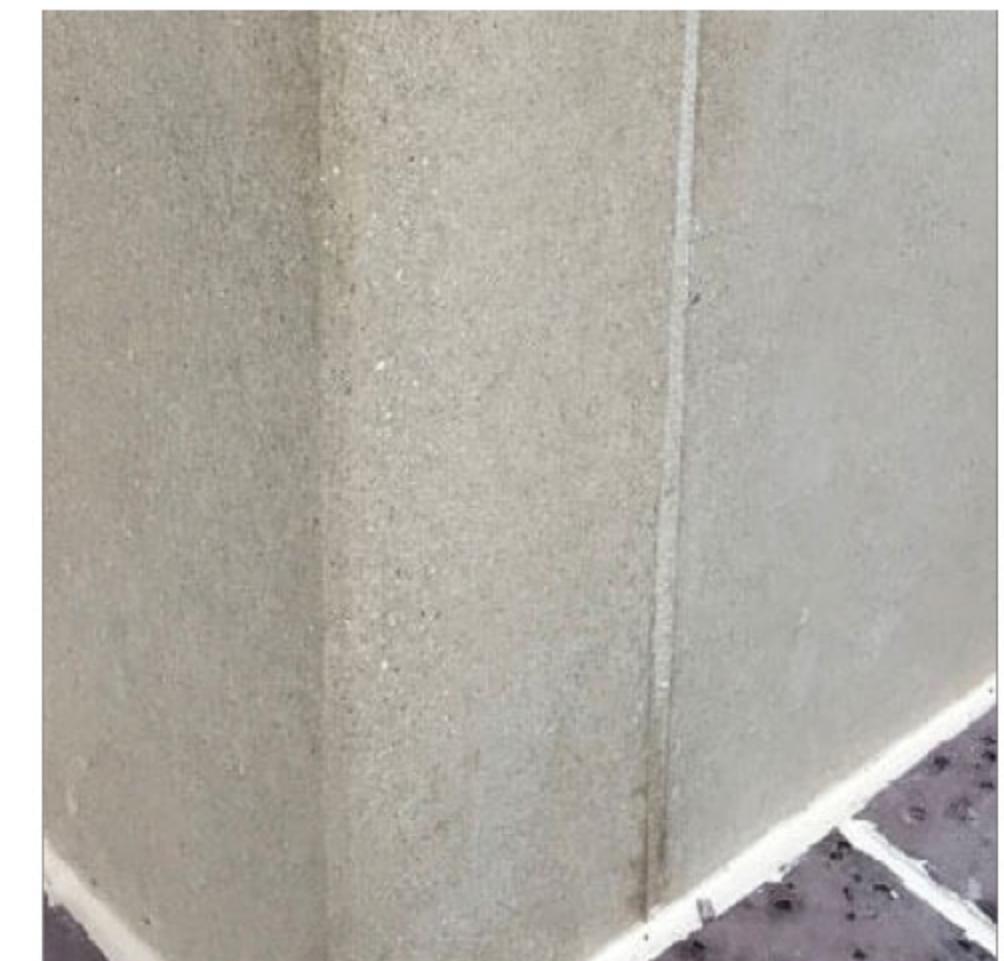
BRICK - RUNNING BOND  
(ACTUAL COLOR NOT REPRESENTED)



SOLDIER COURSE AT WINDOW  
HEAD, U.N.O. (ACTUAL COLOR  
NOT REPRESENTED)



ROWLOCK COURSE AT WINDOW  
SILL, U.N.O.  
SAW CUT SOLDIER COURSE  
BELOW ROWLOCK



PRE-CAST AND CAST-IN  
PLACE CONCRETE



FB1 - SIERRA, ACME BRICK



FB1P - SIERRA, ACME BRICK  
(PAINTED)



FB2 - SAGE BRUSH, ACME BRICK



FB2P - SAGE BRUSH, ACME BRICK  
(PAINTED)