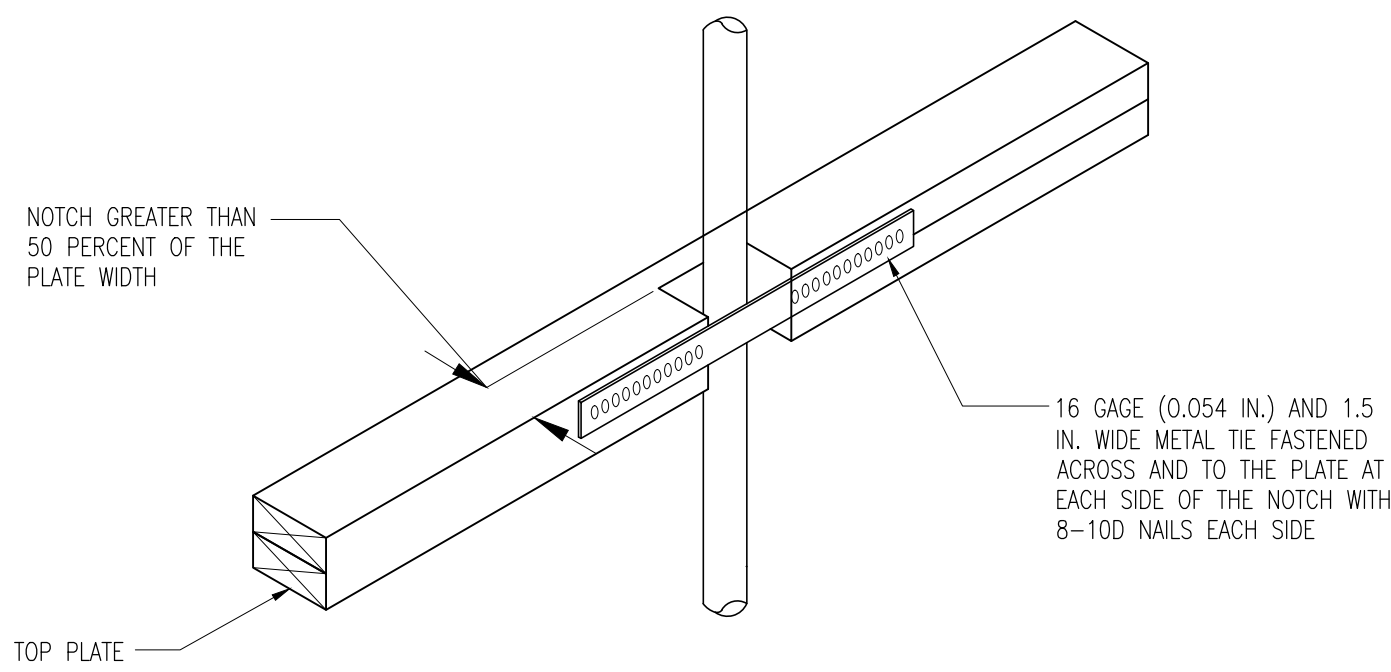
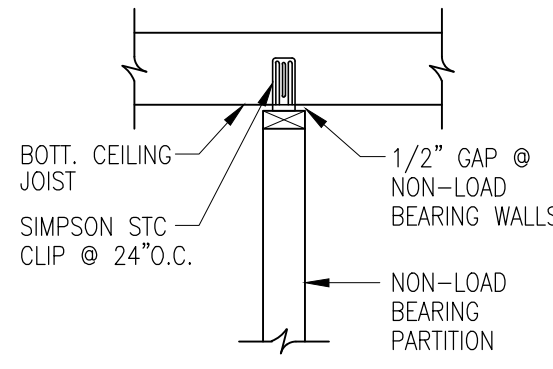


01 TYPICAL EXTERIOR FRAME OPENING DETAIL
SCALE: NONE



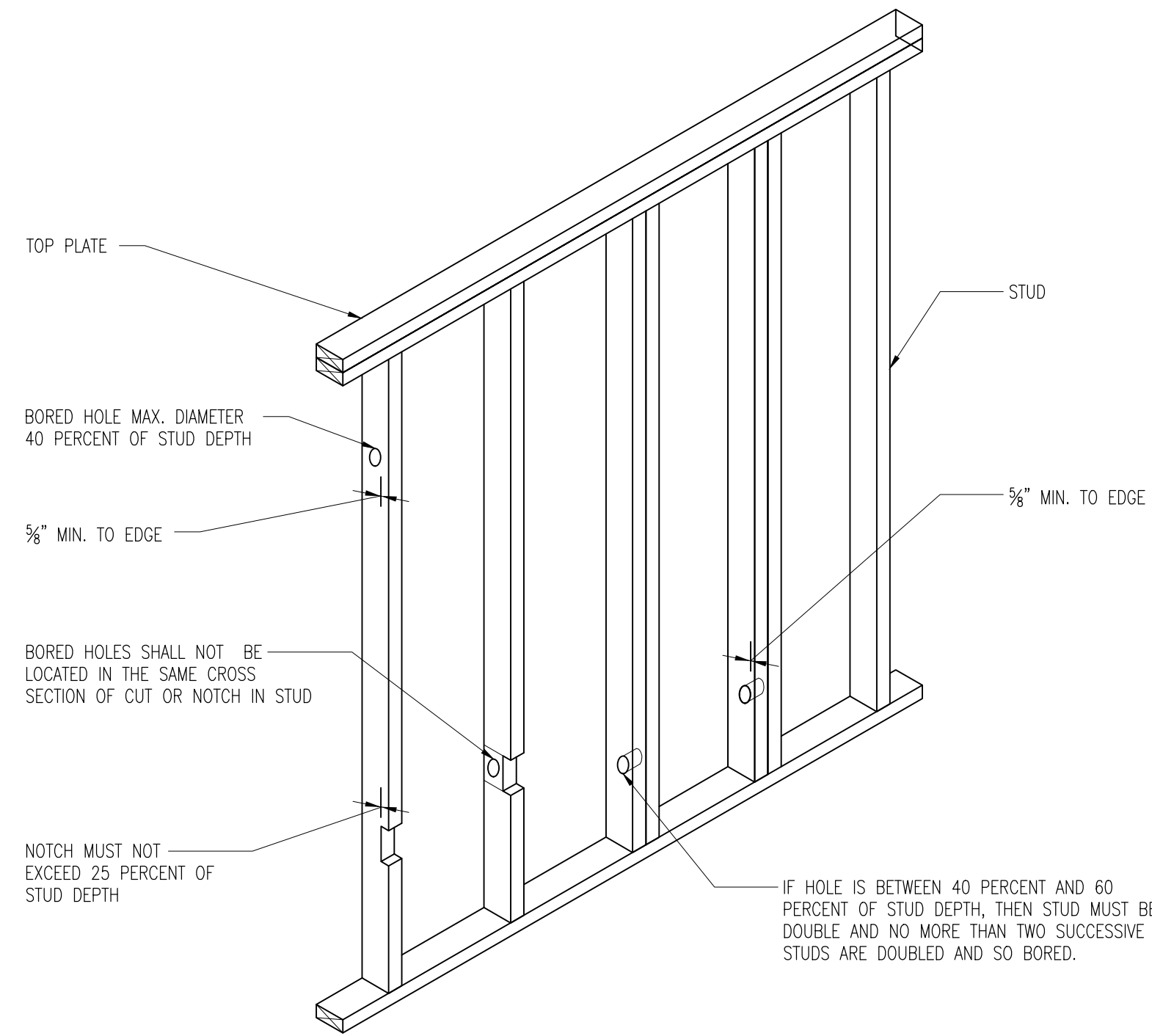
03 TOP PLATE FRAMING TO ACCOMODATE PIPING
SCALE: NONE



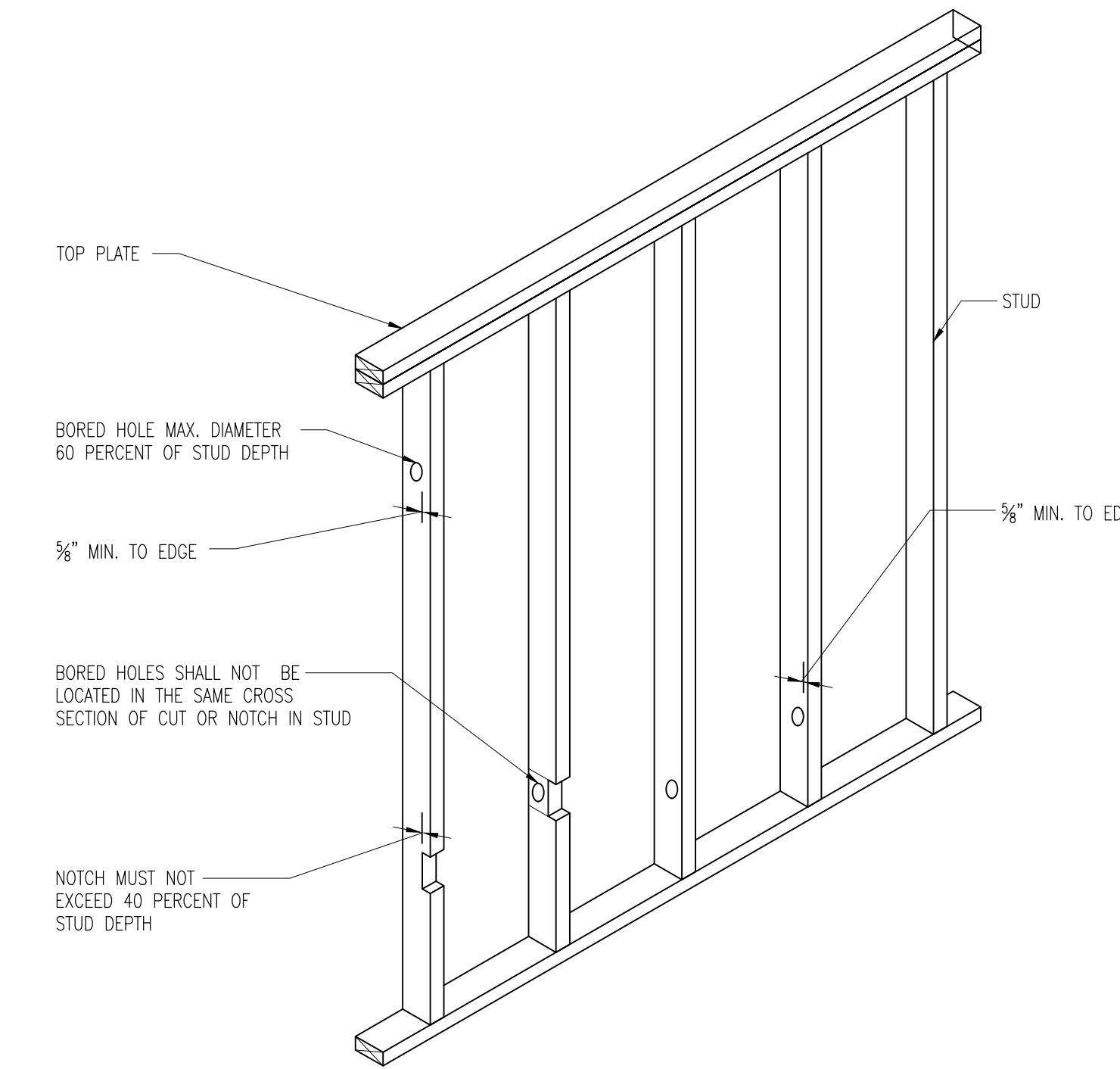
04 DETAIL AT NON-LOAD BEARING PARTITION WALL
SCALE: NONE

ASSEMBLY A "W" = 2PCS. 1 1/2" OR 1 3/4"	ASSEMBLY B "W" = 3PCS. 1 1/2" OR 1 3/4"	ASSEMBLY C "W" = 4PCS. 1 1/2" OR 1 3/4"	ASSEMBLY D "W" = 2PCS. 1 1/2" OR 1 3/4" 1 PC. 3/2" OR 2 1/16"	ASSEMBLY E "W" = 2PCS. 3/2"
2 ROWS OF 16D @ 12" O.C.	(2)- 2 ROWS OF 16D @ 12" O.C.	2 ROWS OF 1/2" @ 12" O.C.	(2)- 2 ROWS OF 16D @ 12" O.C.	2 ROWS OF 1/2" @ 12" O.C.

02 TYPICAL MULTI MEMBER BEAM ASSEMBLY DETAIL
SCALE: NONE



05 NOTCHING AND BORED HOLE LIMITATIONS FOR EXTERIOR WALLS WALLS AND BEARING WALLS
SCALE: NONE

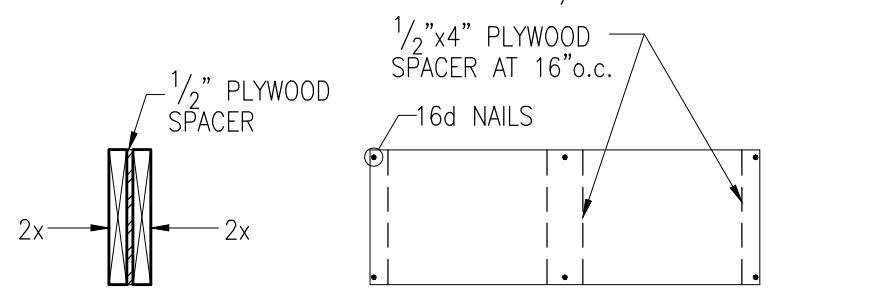


06 NOTCHING AND BORED HOLE LIMITATIONS FOR INTERIOR NONBEARING WALLS
SCALE: NONE

WOOD HANGER SCHEDULE		
MEMBER SIZE	SIMPSON HANGER	CAPACITY (NI POUNDS)
2x4	LUS 24	670
2x6	LUS 26	865
2x8	LUS 28	1100
2x10	LUS 210	1340
2x12	HU 212	1490
2- 2x4	LUS 24-2	800
2- 2x6	LUS 26-2	1030
2- 2x8	LUS 28-2	1315
2- 2x10	LUS 210-2	1830
2- 2x12	HUS 212-2	2660
3- 2x6	LUS 26-3	1785
3- 2x8	LUS 26-3	1785
3- 2x10	LUS 210-3	2680
3- 2x12	HUC 212-3	3275
-	-	-
P/E TRUSS	AS SPECIFIED BY TRUSS DESIGNER	-

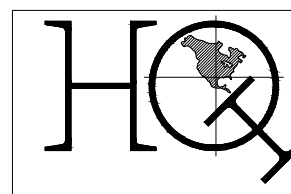
HEADER AND BUILT-UP BEAM SCHEDULE		
MEMBER	MAX. ROOF SPAN	MAX. FLOOR SPAN
2- 2x6 W/ 1/2" PLYWOOD	< 4'-9"	< 4'-0"
2- 2x8 W/ 1/2" PLYWOOD	< 6'-3"	< 5'-2"
2- 2x10 W/ 1/2" PLYWOOD	< 7'-6"	< 6'-2"
2- 2x12 W/ 1/2" PLYWOOD	< 10'-0"	< 7'-2"

- NOTES:**
1. THE LENGTH OF HEADER WILL BE EQUAL TO THE ROUGH OPENING PLUS TWO TRIMMERS.
 2. HEADER SIZE MAY BE INCREASED TO COMPLETELY FILL THE SPACE BELOW THE TOP PLATE.
 3. PROVIDE 3 MEMBERS AT 2x6 WALLS.
 4. REFER TO TIMBER FRAMING NOTES AND 6/S3.3



- NOTES:**
1. PROVIDE HANGERS AT ALL LOCATIONS WHERE WOOD MEMBERS FRAME TOGETHER AT THE SAME ELEVATION.
 2. ALL HANGERS TO BE "SIMPSON STRONG TIE" OR APPROVED EQUAL AND SHALL BE INSTALLED PER SIMPSON'S RECOMMENDATIONS.
 3. PROVIDE SLOPED OR SKEWED HANGERS AS REQUIRED.

07 WOOD SCHEDULE
SCALE: NONE



ENGINEERING,LLC
BULLHEAD, TEXAS
7210-376-6000
EMAIL: hq@hq-eng.net
REGISTRATION NUMBER
F-11874



10-13-2025

THESE DRAWINGS AND SPECIFICATIONS ARE AND SHALL REMAIN THE PROPERTY OF HQ-ENGINEERING,LLC. THEY MAY NOT BE REUSED, REPRODUCED OR ALTERED IN ANY WAY WITHOUT PRIOR APPROVAL FROM AND WITH APPROPRIATE COMPENSATION TO HQ-ENGINEERING,LLC

HOUSE RENOVATION
354 E. HUISACHE AVE.
SAN ANTONIO, TEXAS 78212

DRAWN BY: YD
CHECKED BY: HQ

DATE

10/13/2025
PROJECT NUMBER

973
DRAWING TITLE
TYPICAL DETAILS

SHEET NUMBER:

S3.0