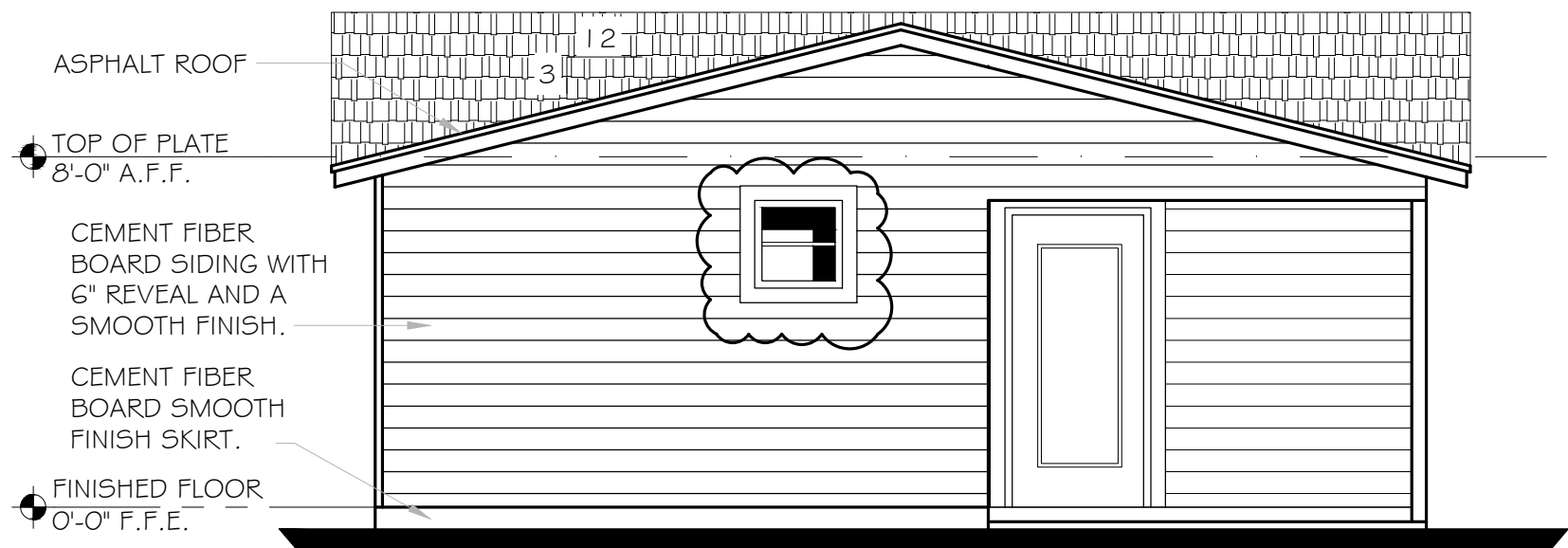




01 FRONT ELEVATION

SCALE: 1/4"=1'-0"

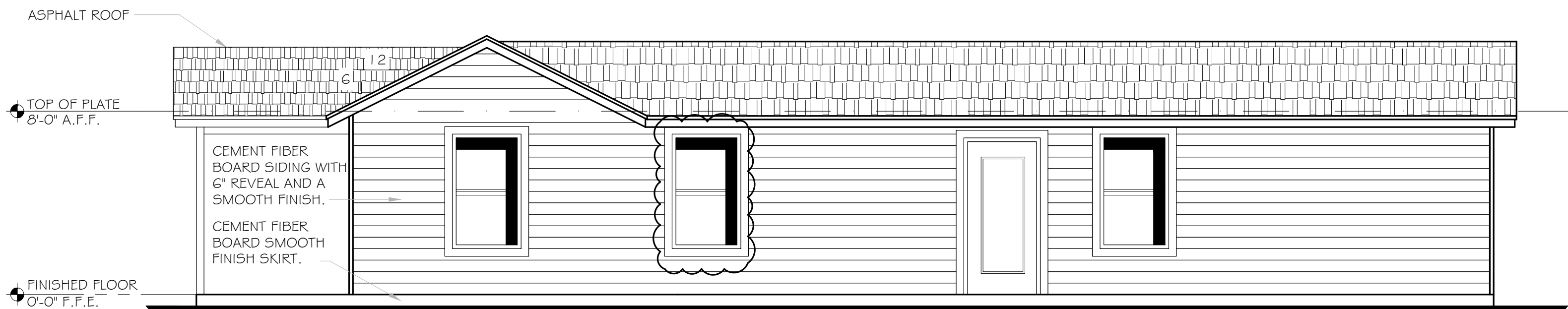
NOTE: VERIFY ROOF SLOPES



02 REAR ELEVATION

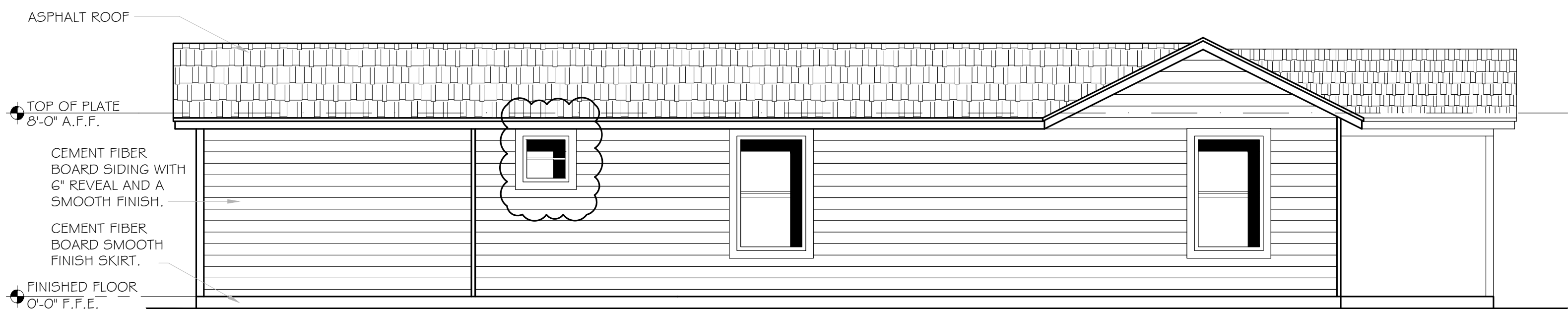
SCALE: 1/4"=1'-0"

NOTE: VERIFY ROOF SLOPES



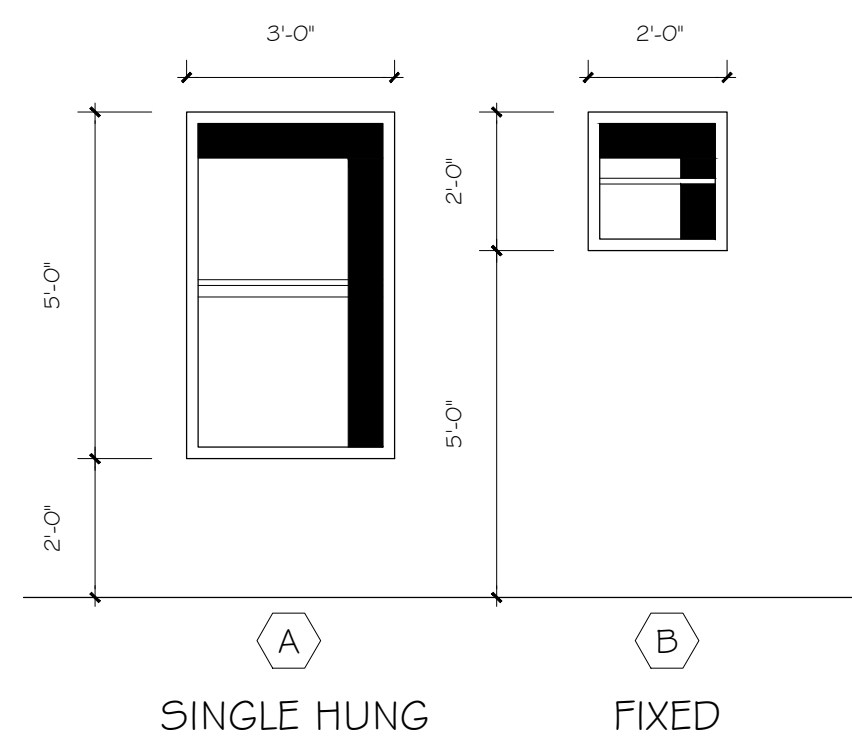
03 RIGHT SIDE ELEVATION

SCALE: 1/4"=1'-0"



04 LEFT SIDE ELEVATION

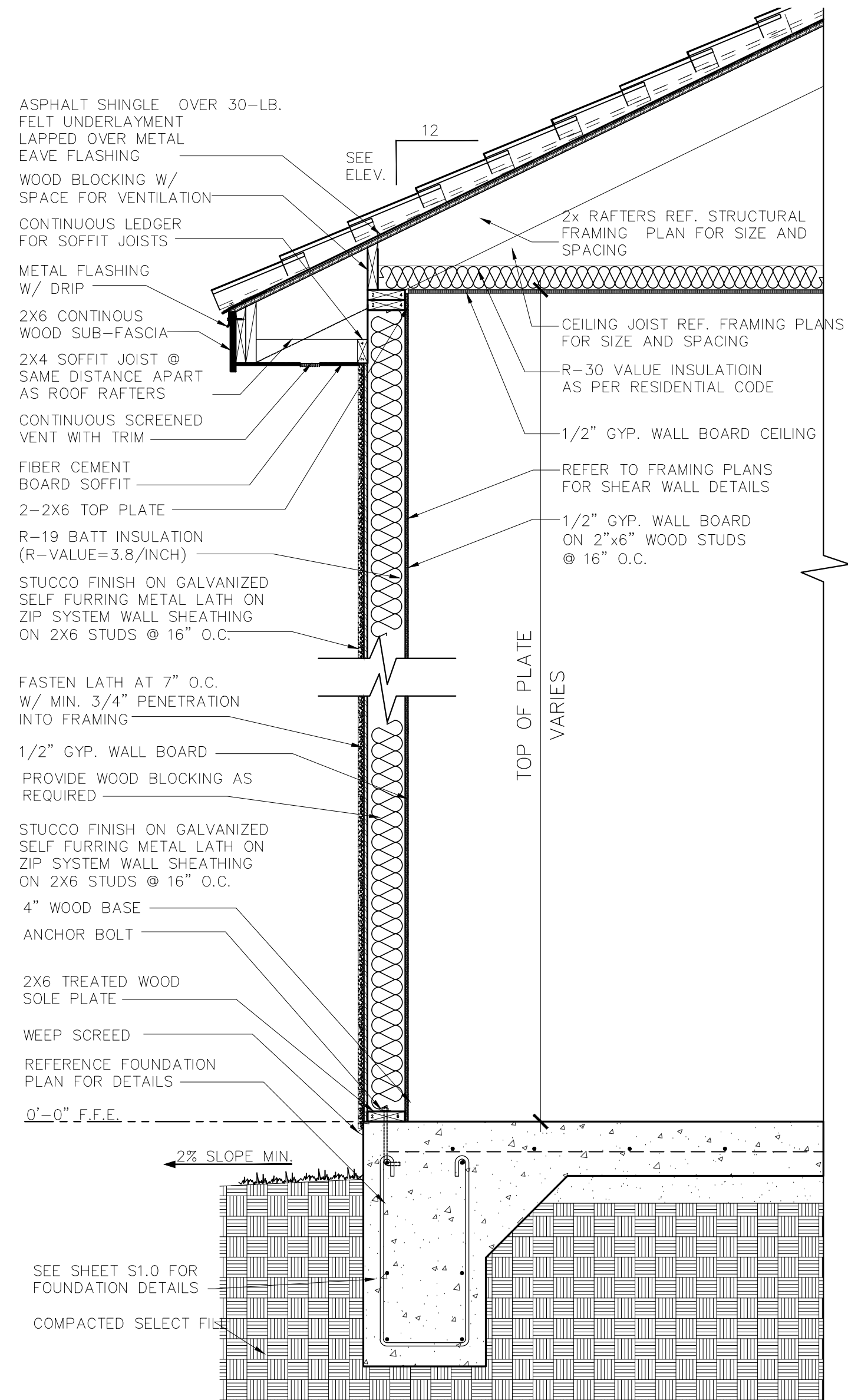
SCALE: 1/4"=1'-0"



WINDOW SCHEDULE

SCALE: N.T.S.

NOTE: Inset of two (2) inches within facades and should feature profiles that are found historically within the immediate vicinity. Meeting rails must be no taller than 1.25" and stiles no wider than 2.25". Minimum of two inches in depth between the front face of the window trim and the front face of the top window sash. This must be accomplished by recessing the window sufficiently within the opening or with the installation of additional window trim to add thickness. Window trim must feature traditional dimensions and architecturally appropriate sill detail. Window track components must be painted to match the window trim or concealed by a wood window screen set within the opening.



05 TYP. WALL SECTION

SCALE: N.T.S.

No.	DATE	DESCRIPTION
1	08-26-24	HDRC

DRAWN JJ
CHECKED JJ
DATE 07/31/24
PROJECT NEW RESIDENCE
JOB. NO. 24050
SHEET