

San Antonio International Airport Terminal Development Plan – Historical and Design Review Commission

May 30th, 2025



The background is a solid dark blue color. It features a pattern of light blue airplane silhouettes and dots of varying sizes. The airplanes are scattered across the left and bottom-left areas, appearing to fly in different directions. The dots are also scattered, with some forming faint, curved lines that suggest flight paths or orbits.

Project Description

SAT Project Description - Overview

The San Antonio International Airport (SAT) is a major economic engine and critical transportation hub for the San Antonio region. Over the years, San Antonio International Airport has experienced substantial continued growth in passenger demand and operational activity. As a result, SAT has outgrown its current operational capacity with this growth necessitating an expansion of current operations and construction of new facilities to accommodate growing demands.

The future development of SAT creates a gateway for passengers into a world-class airport that exemplifies the unique sense of place manifesting the heritage and history of the City of San Antonio while creating a human-centric passenger experience and efficient operations to meet the demand of 21st century air travel.

The City of San Antonio (CoSA) and the San Antonio Airport System (SAAS) recognized the need to create a long-term strategic plan to guide the growth of the airport. This plan, named the Advanced Terminal Planning Program (ATPP) provided a strategic approach to implementing a series of projects to expand and improve SAT facilities and enhance the overall user experience.

In 2022, Corgan was selected to develop a Project Design Manual (PDM) to provide an overview of the capital investment program, including its goals, objectives, recommended design criteria, preferred development options, expected costs, and schedule for implementation. The final PDM was issued to SAAS on June 9, 2023.

SAT Project Description - Design

A key component of the New Terminal project is the entry sequence from the Terminal Drive to the building itself called 'The Paseo', which directly translated means 'a slow, idle, or leisurely walk or stroll; a public place or path designed for walking.' San Antonio is uniquely known for the Paseo del Rio, also commonly known as the River Walk, which has transformed the urban fabric with lush greenery and vibrant life of people and culture. The story of the River Walk and its cultural significance to the people of San Antonio is encapsulated in the Terminal's Paseo which serves as an introduction and glimpse for those arriving to the city.

There are multiple key themes that the terminal building itself encompasses which include the representation of the San Antonio culture and history with its vibrant expression of colors, materiality that reflects the rich texture and neutral tonality of the Central Texas landscape, and the curation of a cohesive, yet unique experience at each level of the terminal.

To elaborate, the first level is known as the Rio (River), in conjunction with the Paseo landscape concept, and is a highly textured experience with deep colors and tones such as dark wood, deeper green hues, and limestone cladding on feature walls. The second level, called the Calle (Street), exhibits a refined aesthetic with finer textures and vibrant materiality and color. Departing passengers begin their journey curbside, passing through a high-volume space with ample natural light that shines on the finishes, icons, colors, and artwork that reflects the local area. As they enter the airside through security, they encounter the Mercado, representing the pinnacle of the experience with its display of colorful, energized collection of spaces with a neutral, textural material backdrop. The third level, the Terraza (Terrace), possesses a light and airy feel, with a subdued look that is expressed through reduced texture and lighter-colored materials, such as blue tones. The cohesive look and feel of the building is maintained throughout, with tie-ins to the planting and natural material palette.

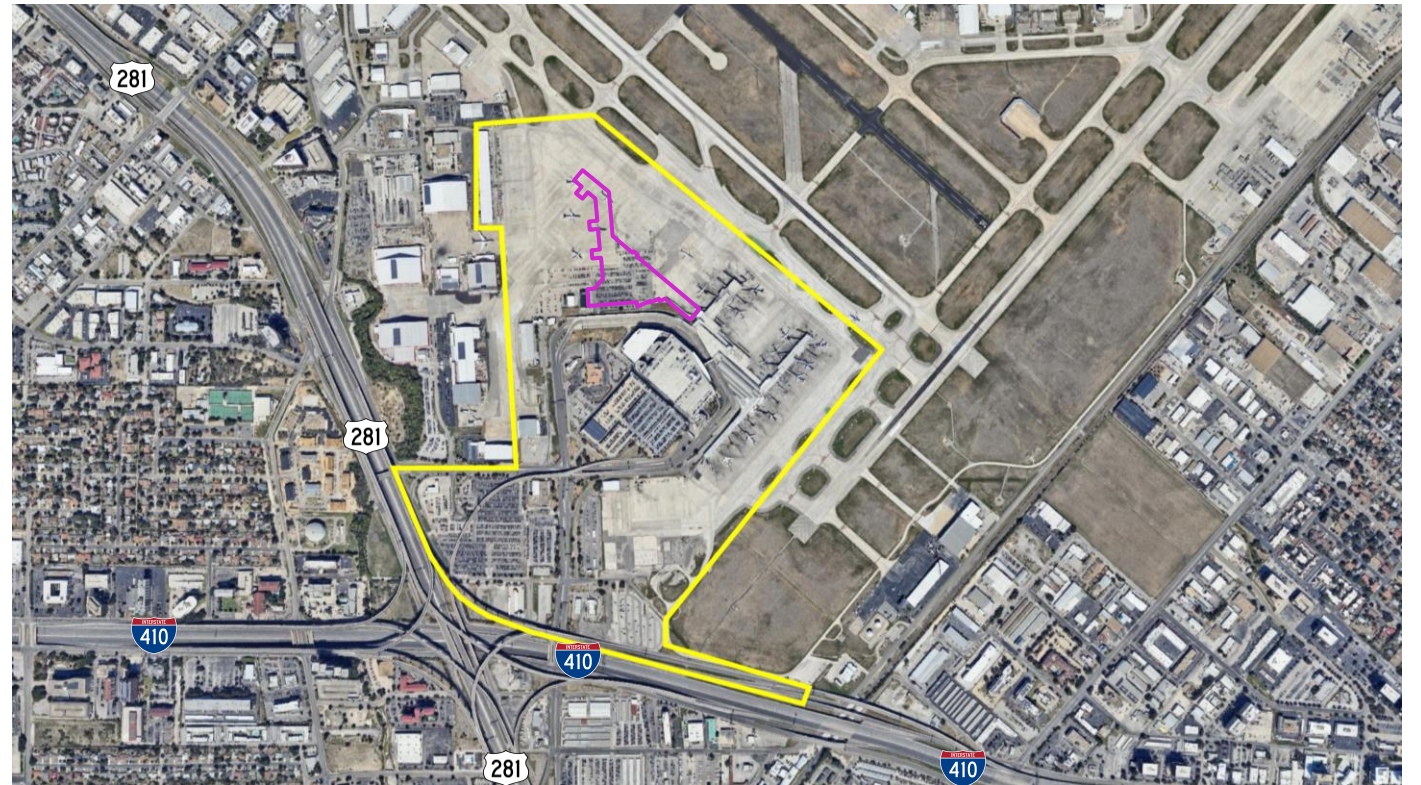
The background is a solid dark blue color. It features a pattern of light blue airplane silhouettes and small circles of varying sizes. The airplanes are scattered across the left and center of the page, appearing to fly in different directions. The circles are also scattered, creating a textured, starry effect.

Property and Context

SAT Airport Property Map

The image on the right shows the limits of the TDP scope of work and location for the proposed development site.

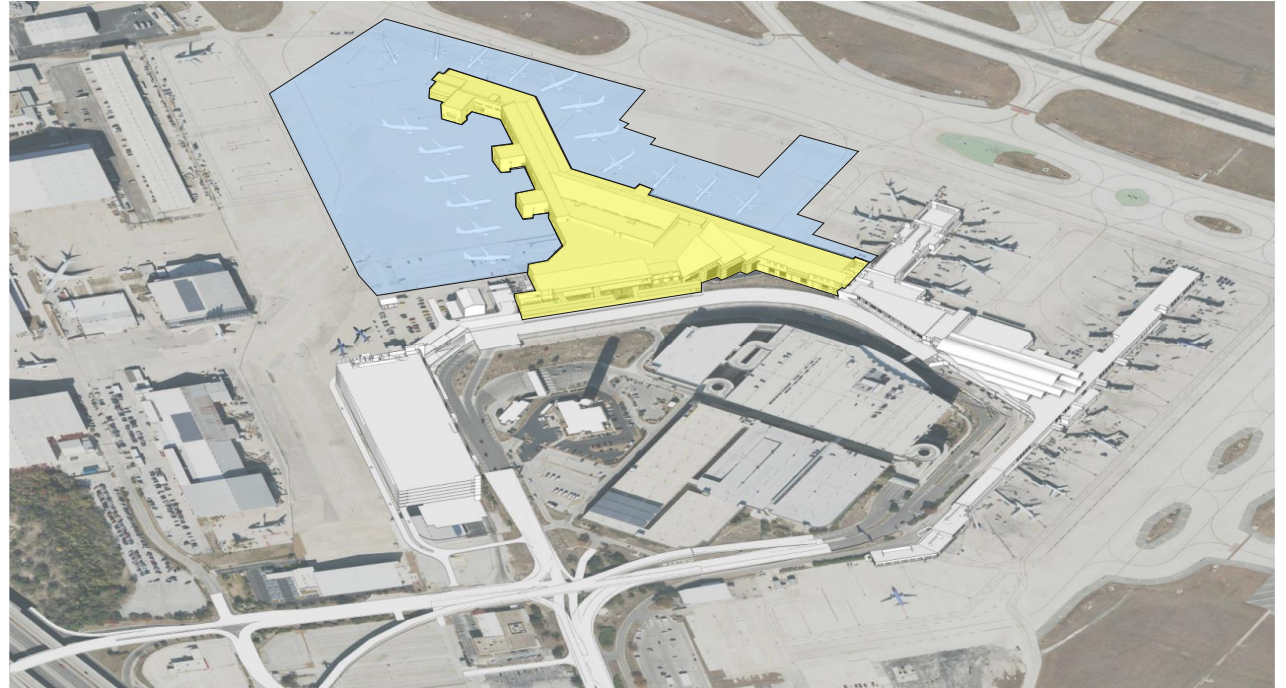
The solid yellow polygon includes all the early works and core projects. The solid purple polygon is the location of Terminal C.



SAT Site Plan

This image provides the general conceptual locations of Terminal C and commercial apron.

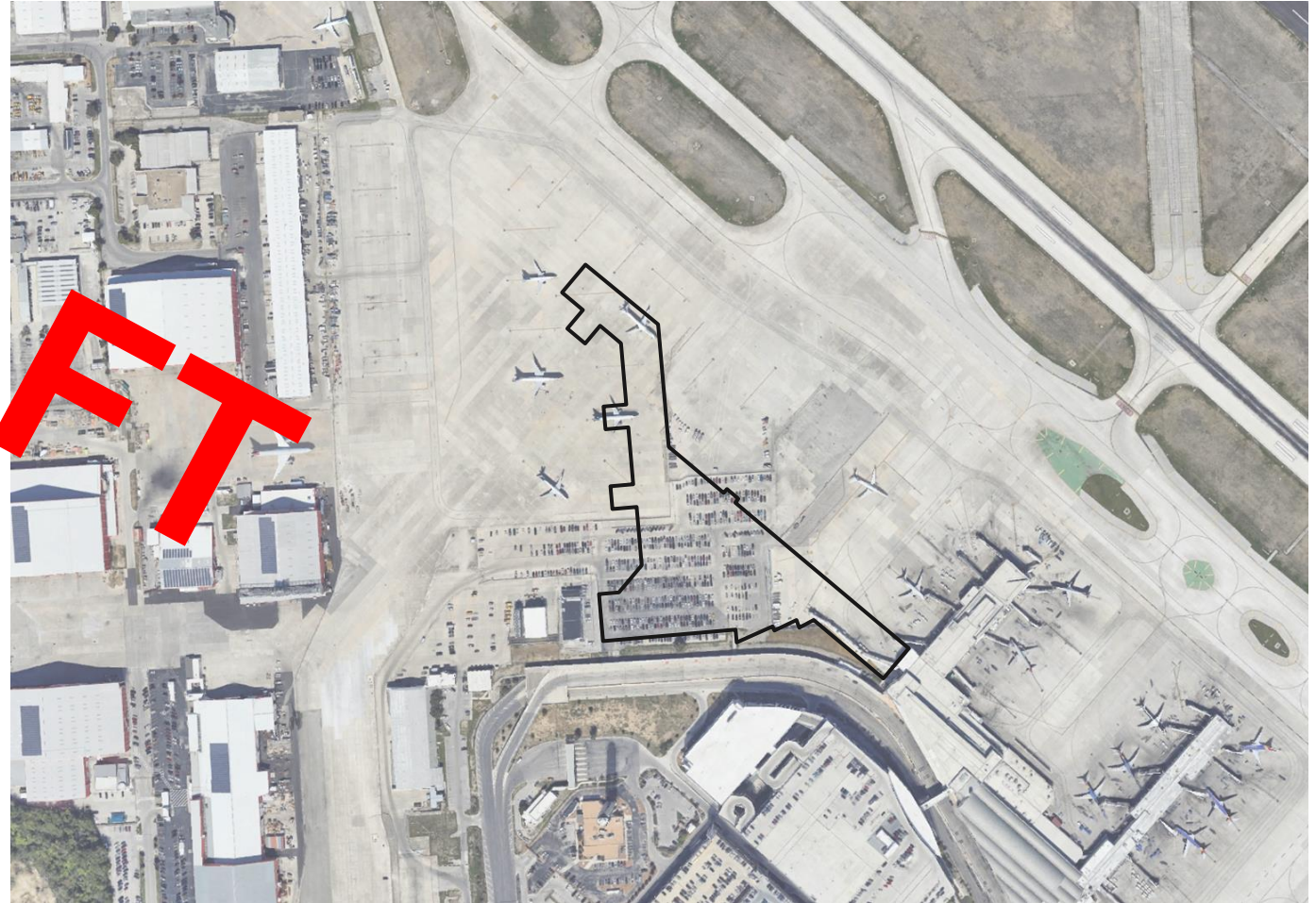
- Legend**
-  New Terminal
 -  Commercial Apron



SAT Site Plan Enlargement

This image provides an enlargement of the Terminal location.

DRAFT

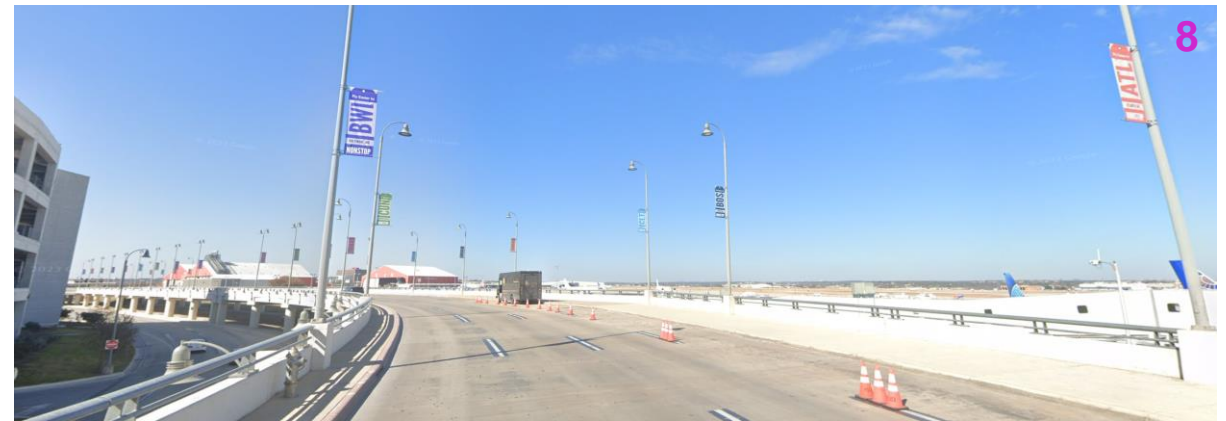


SAT Photos – Curbside Approach



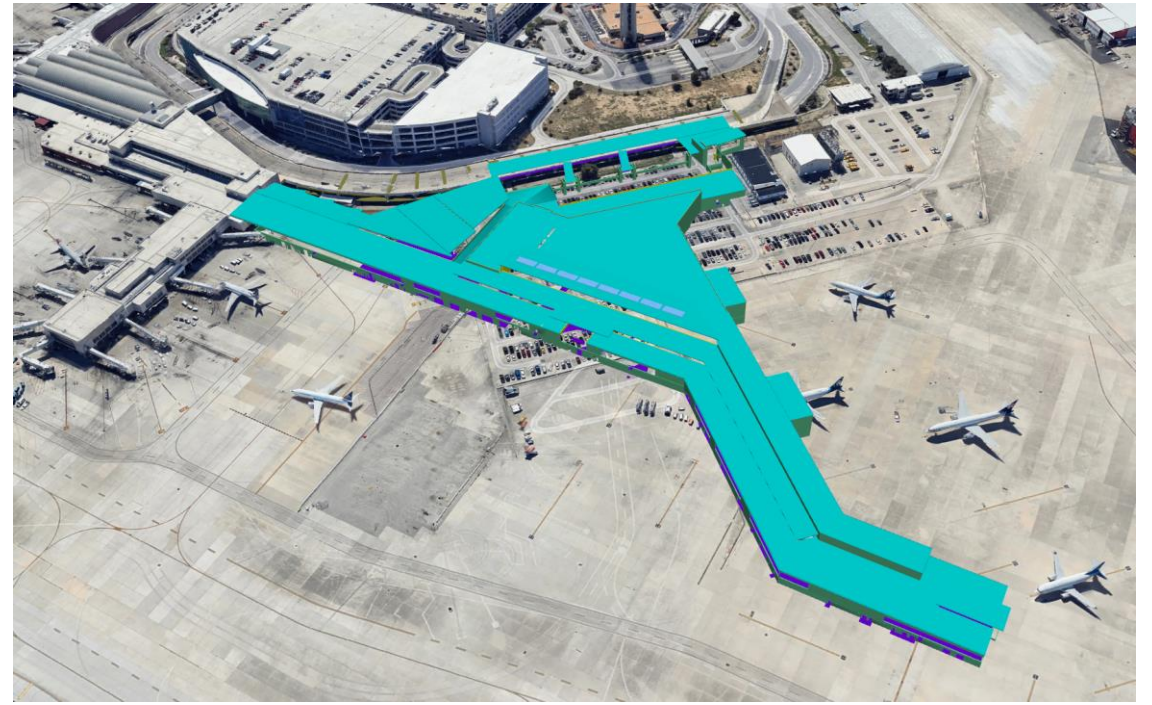
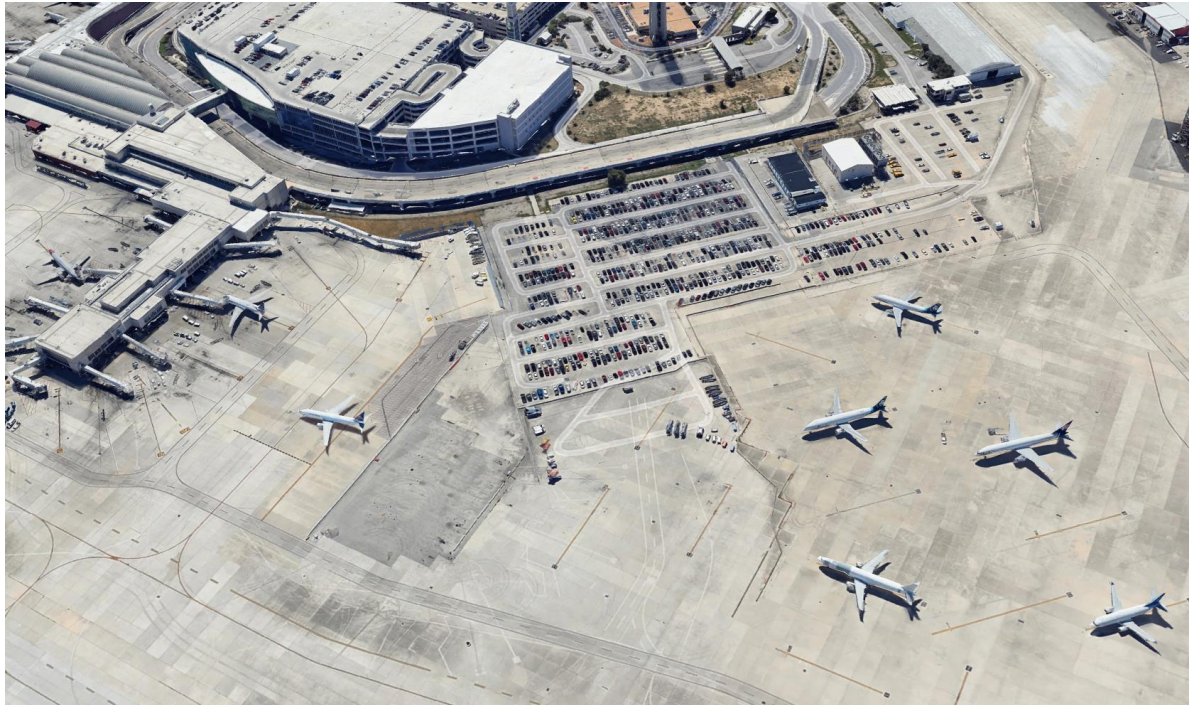
All Images Sourced From: *Google Street View*

SAT Photos – Curbside Approach



All Images Sourced From: *Google Street View*

SAT Photos – Existing Car and RON Parking



Source: Google Earth / Model From: Corgan

Photos – Terminal A and B

Terminal A



Source: San Antonio Express-News



Source: KENS 5



Source: Corgan

Terminal B



Source: Google Earth



Source: Google Earth



Source: Corgan

SAT Terminal A and B + Terminal C

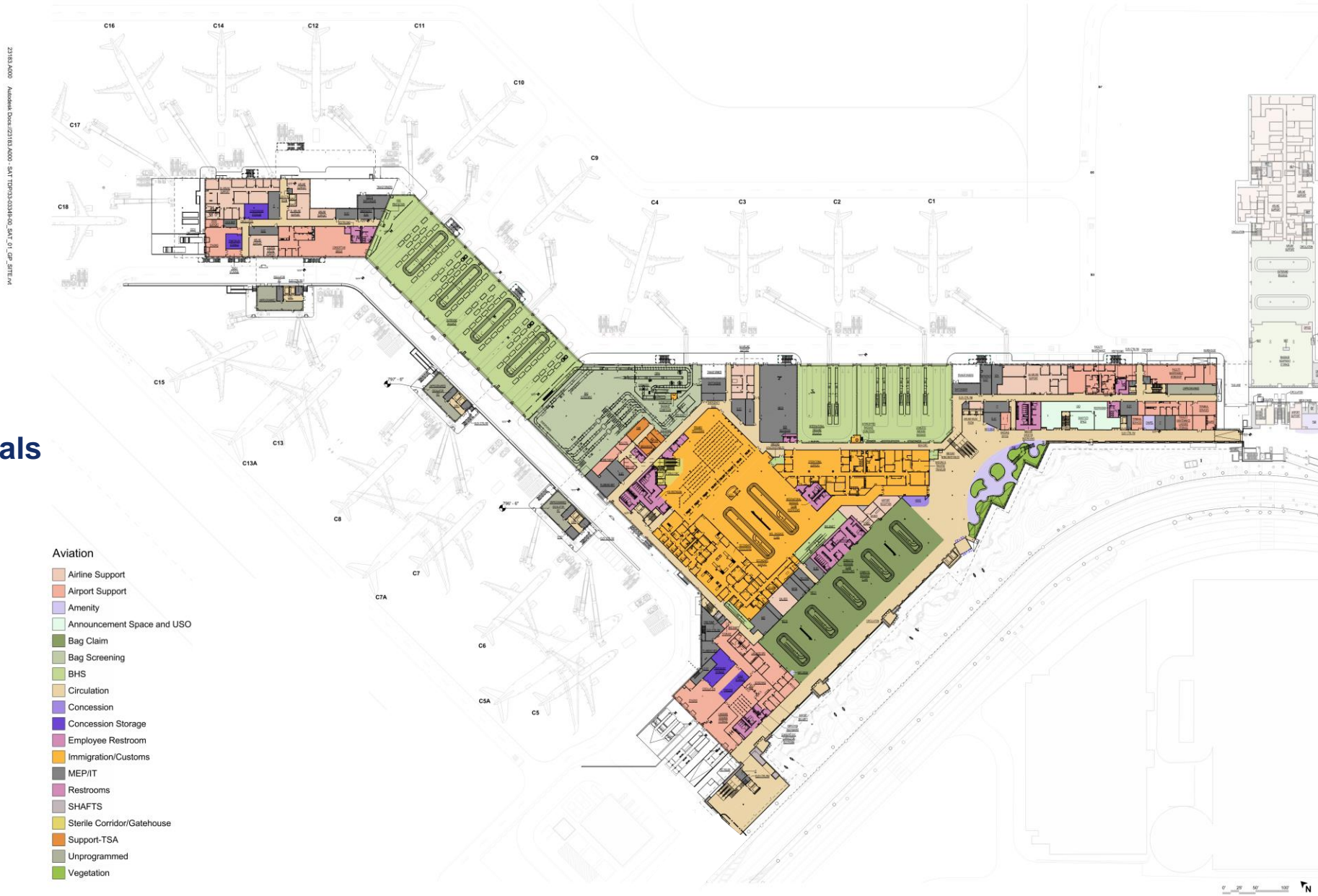


The background features a dark blue field with a pattern of light blue dots and airplane silhouettes. The dots are arranged in a grid-like pattern that curves from the top-left towards the bottom-right. The airplane silhouettes are scattered throughout, appearing to fly in various directions.

Conceptual Development and Architectural Drawings

SAT Floor Plans

Level 1 - Arrivals

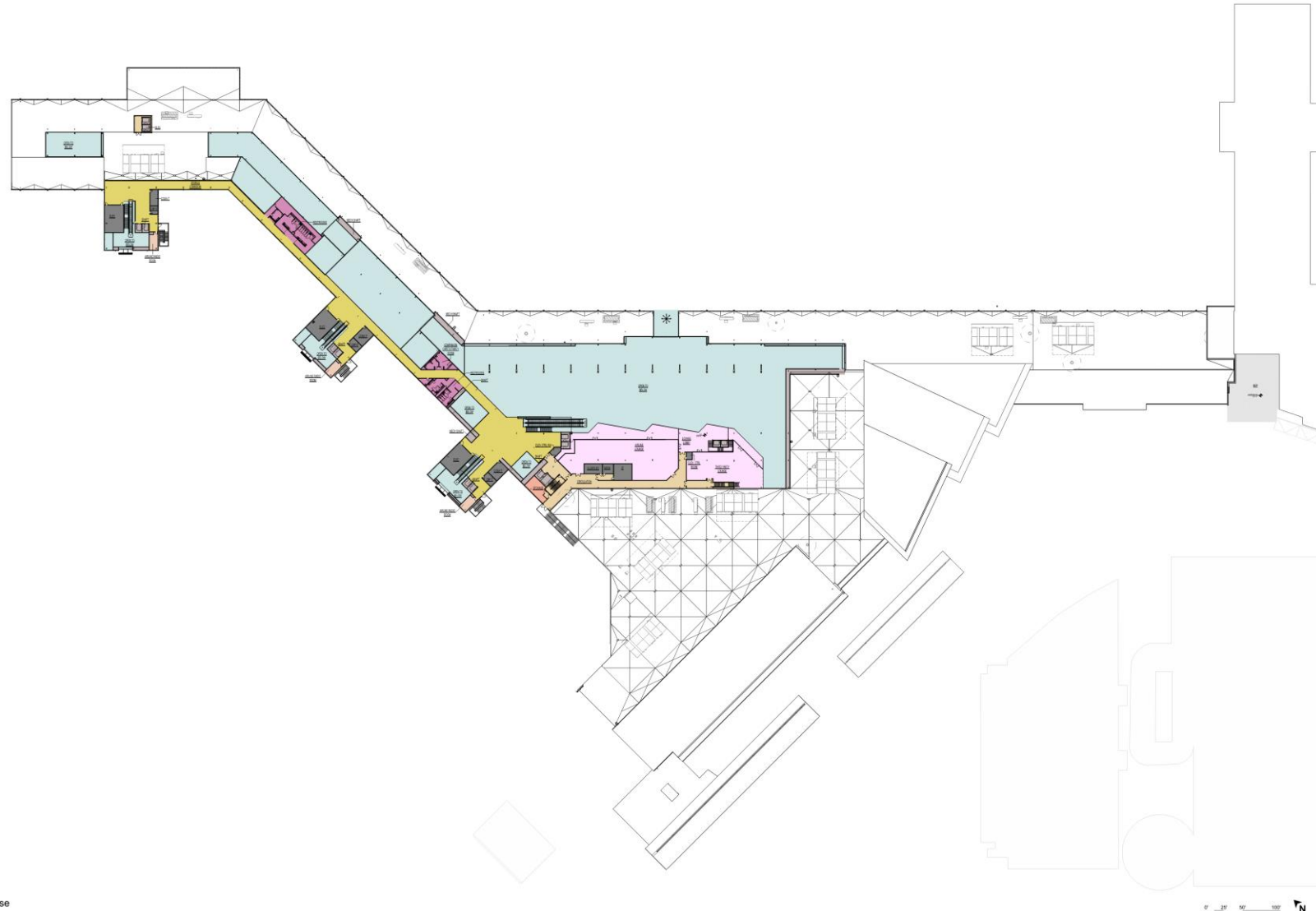


SAT Floor Plans

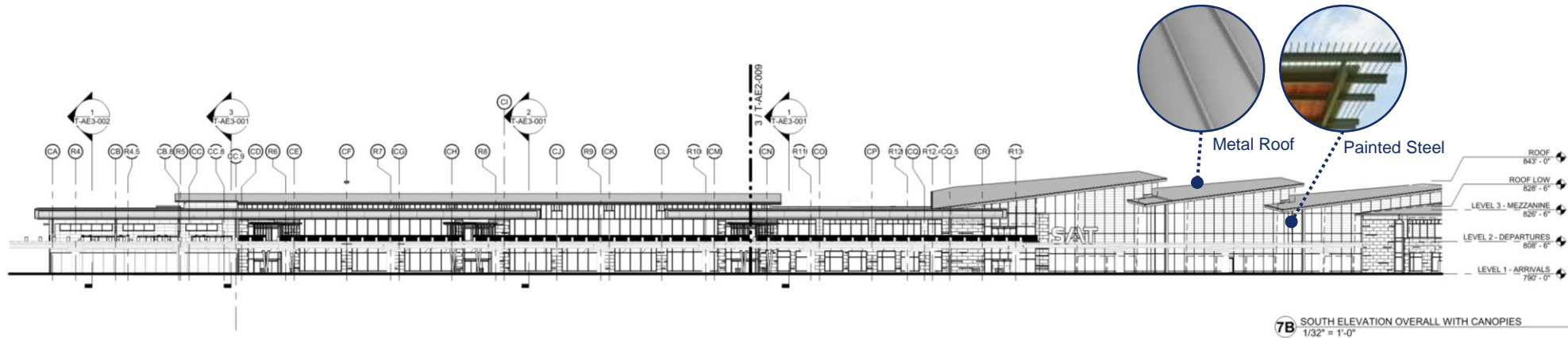
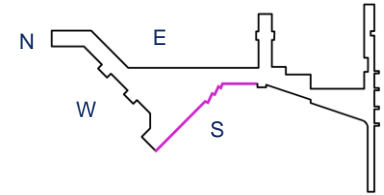
23153.0000 - Aviation Dec 12/13/0000 - SAT_TPR0303030100_SAT_01_gp_SITE.rvt

Level 3 - Mezzanine

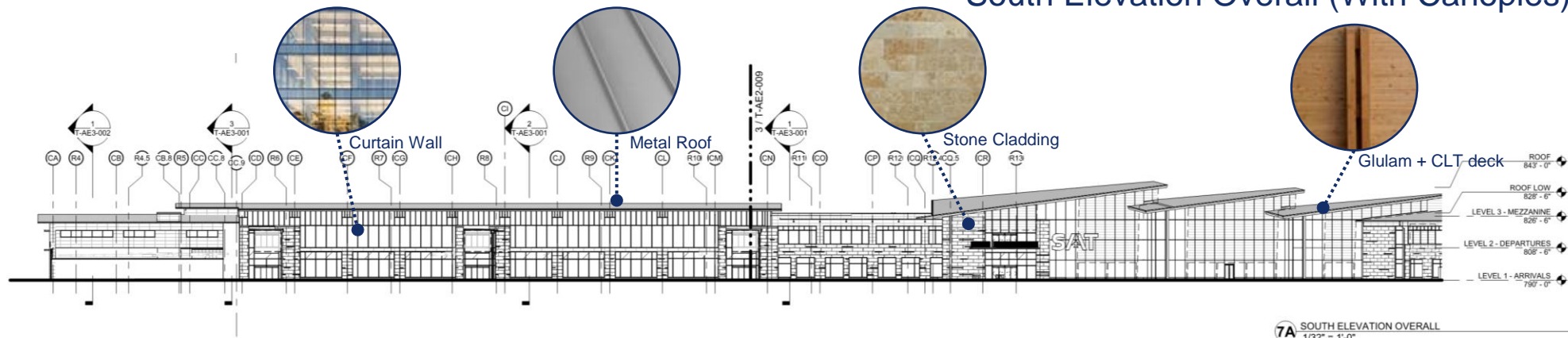
- Aviation
- Airline Support
 - Airport Support
 - Circulation
 - Lounge
 - MEP/IT
 - Open To Below
 - Restrooms
 - SHAFTS
 - Sterile Corridor/Gatehouse



SAT Elevations - South

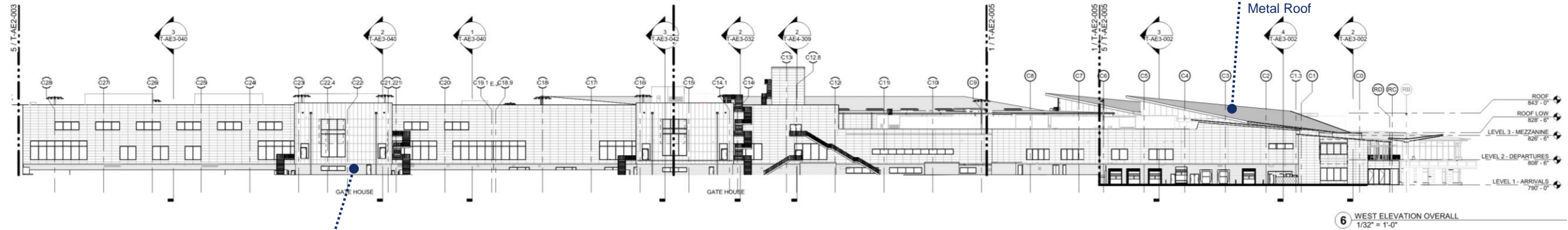
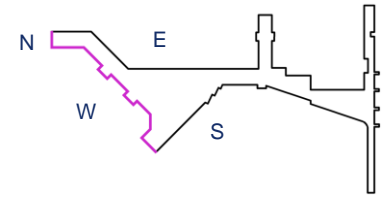


South Elevation Overall (With Canopies)



South Elevation Overall

SAT Elevations – West & North



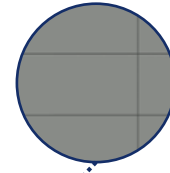
West Elevation Overall



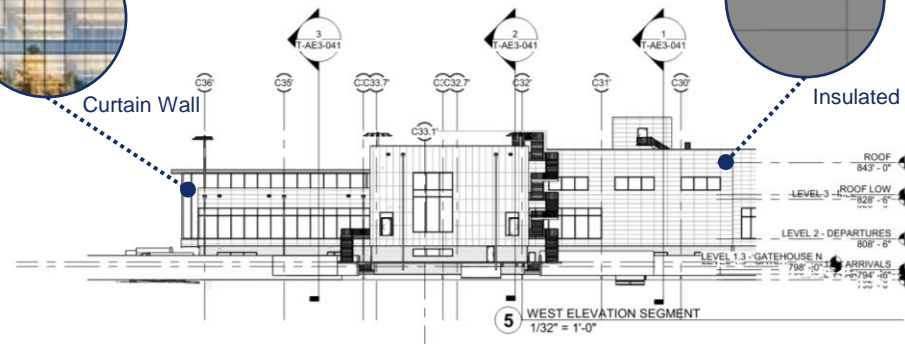
CMU



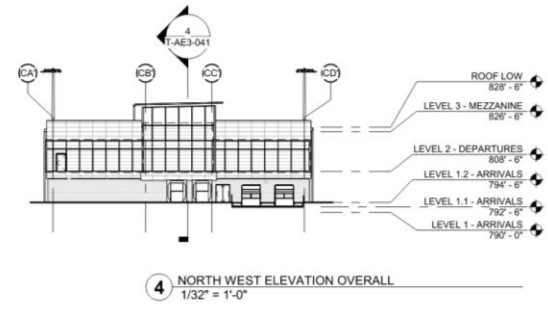
Curtain Wall



Insulated Metal Panel

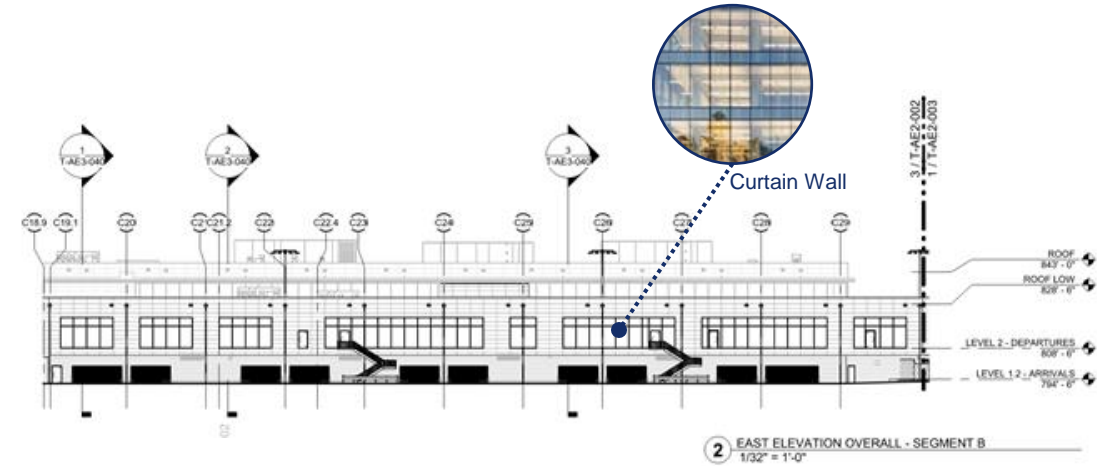
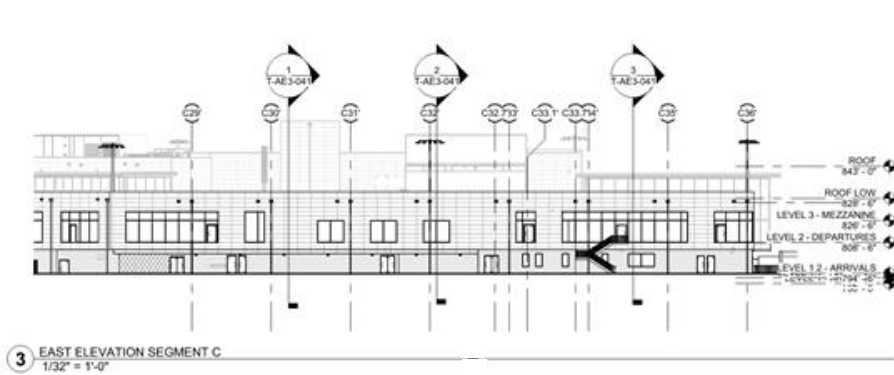
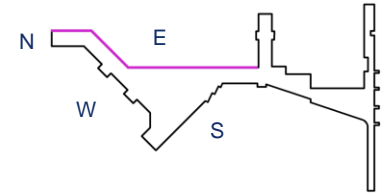


West Elevation Segment



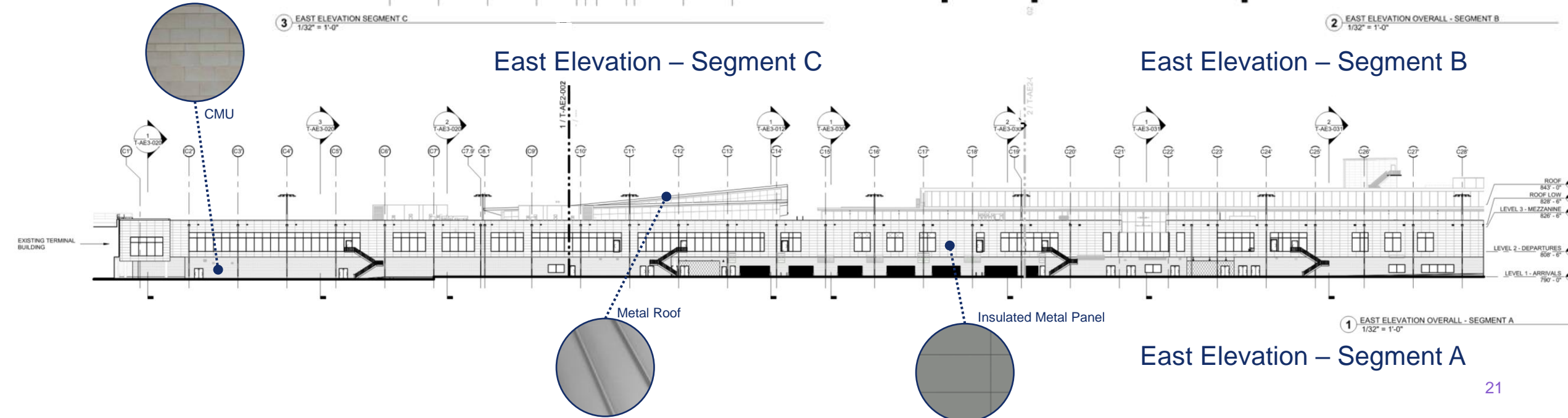
North West Elevation Overall

SAT Elevations - East



East Elevation – Segment C

East Elevation – Segment B



East Elevation – Segment A

Concepts



Flooring



EPOXY TERRAZZO - FIELD: TZ-1
 → BOD: TERRAZZO & MARBLE, MB20-010V
 → 3/8" Thickness
 → Two component epoxy mixed with # 4 & 5 crushed marble & glass aggregate
 → Location: PUBLIC CIRCULATION, PRIMARY PROCESSING, CONCESSION CORRIDOR, MEETER GREETER



EPOXY TERRAZZO - ACCENT 1: TZ-2
 → BOD: TERRAZZO & MARBLE, CUSTOM MIX TBD
 → 3/8" Thickness
 → Two component epoxy mixed with # 2 & 3 crushed marble & glass aggregate
 → Location: TICKETING, FOOD HALL, MEETER GREETER



PALLADIANA TERRAZZO: TZ-4
 → BOD: TERRAZZO & MARBLE, CUSTOM MIX TBD
 → 3/4" - 1" Thickness
 → Marble slabs cut random and paved in a pattern and the mixture of terrazzo aggregates in epoxy and poured to fill the gaps.
 → Location: CENTRAL CONCESSION AREA



CARPET: TP-1
 → BOD: INTERIORS, FERRIS - 107523 Forest
 → 100% Recycled Content Nylon
 → 100% Solution Dyed
 → Size: 9.845" x 39.38"
 → Location: GATE LOUNGES



CROSS-LAMINATED TIMBER (CLT)
 → BOD: SMARTLAM - 9 PLY CLT
 → Species: TBD
 → Location: TICKETING HALL, GREAT HALL, AND CENTRAL CONCESSION AREA



LINEAR WOOD LOOK METAL CEILING: MP-2
 → BOD: CLAY IMPORTS, SEERSUCKER MATTE
 → COLOR: TBD
 → Size: 24" x 96"
 → Location: TICKETING CANOPIES - UNDERSIDE



ACOUSTICAL BAFFLE CEILING: SF-2
 → BOD: ARCTURA - SOUNDBAR
 → Acoustic PET
 → Color: A mix of White, Sand, Morel
 → Size: a mix of 3" and 4" wide, 2', 4', and 6' long linear baffles with 4", 6", and 10" heights.
 → Location: SSCP



METAL PANEL CEILING WITH TECHZONE: MP-1
 → BOD: ARMSTRONG METALWORKS
 → 24" x 48" perforated panel with 4" wide technology zone
 → Location: GATE LOUNGE

METAL SLAT CEILING WITH A WOOD LOOK: MP-5
 → BOD: ARMSTRONG IMMIX BLADES
 → Size: 24" x 96" x 4"
 → Color: TBD
 → Location: DOMESTIC & INTERNATIONAL BAGGAGE CLAIM HALLS

PERFORATED METAL PANEL CEILING: MP-3
 → BOD: ARKTURA - VAPOR - SKY
 → Powder-coated aluminum torsion spring panels
 → Size: 2' x 4' x 1 1/2"
 → Color: Arktura White
 → Location: LEVEL 3 PUBLIC SPACES INCLUDING CLUB AND STERILE CORRIDOR.

Walls



PORCELAIN WALL TILE - FIELD: WT-1
 → BOD: CONCEPT SURFACES - PUEBLO
 → Bianco Irregolo
 → 24" x 48"
 → Location: PUBLIC AREA, FIELD WALL TILE U.N.O



TERRACOTTA TILE: WT-2&3
 → BOD: CLAY IMPORTS, SEERSUCKER MATTE
 → COLOR: TBD
 → Matte Sealed, 4" x 12" x 5/8"
 → Terracotta
 → Location: TICKETING BACKWALL



BREEZE BLOCKS: BZ-1
 → BOD: MUTINA - CELOSIA
 → Extruded Terracotta
 → Size: 8" X 18" X 4"
 → Location: CONCESSION PAVILLIONS



LIMESTONE WALL CLADDING (EXTERIOR/ INTERIOR): WT-9
 → BOD: Sisterdale, Texas "Old Yella"
 → Random broken/chopped lengths. Nominal 3-5" thickness
 → Location: ENTRY VESTIBULE



GLASS FIBER REINFORCED GYPSUM: GRFG-1
 → BOD: ARMSTRONG CASTWORKS GRG
 → Location: BULKHEAD AT CONCOURSE, INLINE CONCESSION, TICKETING



CERAMIC TILE: WT-4
 → BOD: ARTISTIC TILE - ENAMEL - MOSS
 → Size: 1 7/8" X 9 3/4" X 5/16"
 → Location: RESTROOM ENTRY VESTIBULE



SPECIALITY CEILING: SF-2
 → BOD: ARCTURA - SOFTSPAN 48 TRELIS MODULE
 → Acoustic PET
 → Size: 10" High with 4"x4" Opening
 → Color: wood look
 → Size: Location: CONCESSION PAVILLIONS



SAT Exterior Materials



STONE CLADDING



CURTAIN WALL



PERFORATED METAL



CMU BLOCK



PAINTED STEEL



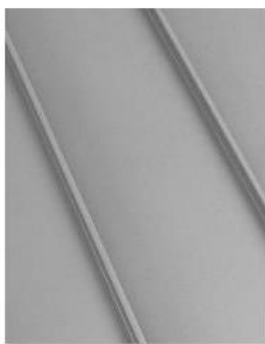
DECORATIVE RAIL



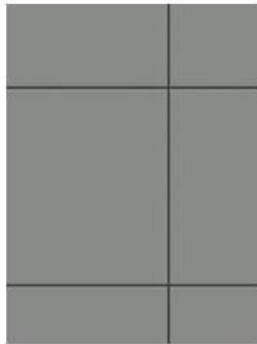
STONE TEXTURE



GLULAM & CLT DECK



METAL ROOF

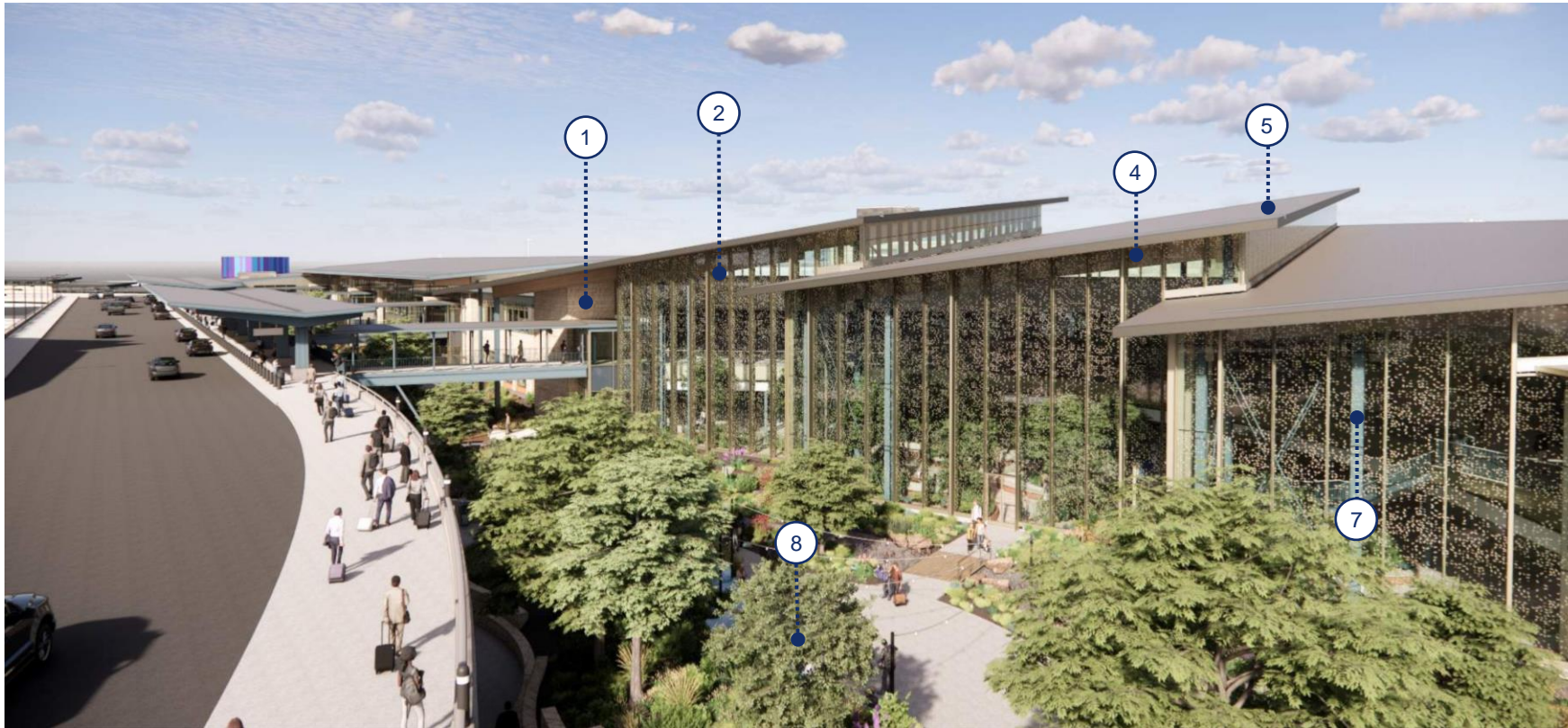


INSULATED METAL PANEL



VEGETATION

SAT Exterior Materials: South Perspective



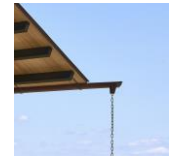
1. Stone Cladding



5. Metal Roof



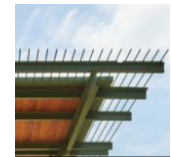
2. Curtain Wall



6. Rain Chain



3. Perforated Metal



7. Painted Steel



4. Glulam + CLT deck



8. Vegetation

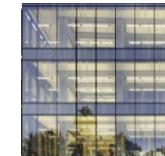
SAT Exterior Materials: SW Perspective



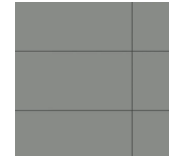
1. Stone Cladding



5. Metal Roof



2. Curtain Wall



6. Insulated Metal Panel



3. Perforated Metal



7. CMU Block



4. Glulam + CLT deck



8. Decorative Rail

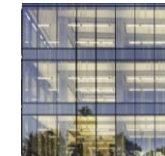
SAT Exterior Materials: NE Perspective



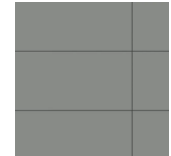
1. Stone Cladding



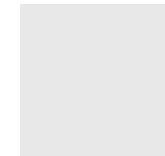
5. Metal Roof



2. Curtain Wall



6. Insulated Metal Panel



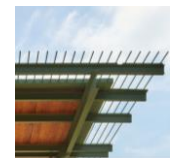
3. Single Ply Roof



7. CMU Block



4. Glulam + CLT deck



8. Painted Steel

SAT Planting Material



Autumn Sage (*Salvia greggii*)

(TX) DFW



Indigo Spires (*Salvia 'Indigo Spires'*)

DFW



Splitleaf Philodendron (*Philodendron selloum*)



Cast Iron Plant (*Aspidistra elatior*)



Spineless Prickly Pear (*Opuntia cacanapa 'Ellisiana'*)



SAAS (TX) DFW



Red Yucca (*Hesperaloe parviflora*)

(TX) DFW



Dwarf Yaupon Holly (*Ilex vomitoria*)

(TX) DFW



Asparagus Fern (*Asparagus densiflorus*)



Holly Fern (*Cyrtomium falcatum*)



Upright Rosemary (*Rosmarinus officinalis*)

(TX) DFW



Purple Heart (*Setcreasea pallida*)



Gulf Muhly (*Muhlenbergia capillaris*)

(TX) DFW



Crossvine (*Bignonia capreolata*)

(TX) DFW



Firecracker Fern (*Russelia equisetiformis*)



Dwarf Ruellia (*Ruellia brittoniana 'Katie'*)

DFW



Dwarf Palmetto (*Sabal minor*)

(TX)

SAT Planting Material



Retama (*Parkinsonia aculeata*)

SAAS TX



Cedar Elm (*Ulmus crassifolia*)

TX DFW



Anacacho Orchid (*Bauhinia congesta*)

TX



Tree Bubbler



Tree Bubbler



Spray Head



Spray Head



Mountain Laurel (*Sophora secundiflora*)

SAAS TX DFW

Wildlife Note: Produces Beans But Not Desired By Wildlife



Bald Cypress (*Taxodium distichum*)

TX DFW



Dry Creek Bed and Planting - Typical Planting with varying sized Stone and Rocks



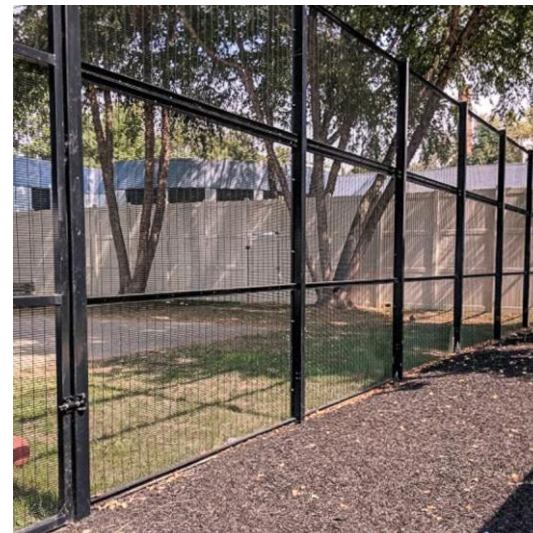
Drip Irrigation



Drip Irrigation

SAT Site Fencing

Aircraft Operations Area (AOA) High Security Fence Options



DRAFT

The background is a solid dark blue color. On the left side, there are several curved paths of small, light blue dots. Interspersed among these dots are silhouettes of airplanes in flight, also in a light blue color. The airplanes are positioned at various points along the curved paths, suggesting movement or a sequence of events. The overall aesthetic is clean and modern.

Thank you