









Page Southerland Page, Inc.  
400 W. Cesar Chavez Street Suite 500  
Austin, TX 78701  
pagethink.com

TEL 512 472 6721  
FAX 512 477 3211

ARCHITECTURE / ENGINEERING / INTERIORS / PLANNING / CONSULTING  
Austin / Dallas / Denver / Houston / San Francisco / Washington DC /  
International Affiliate Offices

**CONSULTANT TEAM**

**CIVIL**  
PAPE-DAWSON  
ENGINEERS INC.  
2000 NW LOOP 410  
SAN ANTONIO, TX 78213  
(210) 375-9010  
(512) 354-5288

**LANDSCAPE**  
CAMPBELL LANDSCAPE  
ARCHITECTURE  
608 WEST MONROE STREET  
UNIT D  
AUSTIN, TX 78704  
(512) 354-5288

**STRUCTURAL**  
ARCHITECTURAL ENGINEERS  
COLLABORATIVE  
123 PARLAND PLACE  
SAN ANTONIO, TX 78209  
(210) 890-4200

**MFP**  
BLUM CONSULTING  
ENGINEERS, INC.  
8144 WALNUT HILL LN  
SUITE 200  
DALLAS, TX 75231  
(214) 373-8222

**PARKING**  
HWA PARKING  
9600 GREAT HILLS TRL.  
SUITE 150W  
AUSTIN, TX 78759  
(512) 306-8722

FLOOR PLAN LEGEND	
SYMBOL	DESCRIPTION
	MATCHLINE
	SHEET REFERENCE
	KEYED NOTE KEYED NOTES ONLY APPLY TO THIS SHEET
	PARTITION TAG REFER TO PARTITION SCHEDULE
	BUILDING SECTION TAG WALL SECTION TAG
	EXTERIOR ELEVATION TAG
	INTERIOR ELEVATION TAG
	PLAN REFERENCE TAG
	ROOM NAME ROOM NUMBER
	NEW DOOR WITH DOOR TAG REF DOOR SCHED
	NEW WINDOW WITH WINDOW MARK REF GLAZING ELEVATIONS
	COLUMN GRID DESIGNATIONS

**KEYED NOTES**

NUMBER	DESCRIPTION

**PARKING SCHEDULE BY LEVEL**

Level	SPACE TYPE	QUANTITY
LEVEL 06	STANDARD (9'X18') PARKING SPACE	72
LEVEL 05	ADA PARKING SPACE	2
LEVEL 05	EV ADA PARKING SPACE	2
LEVEL 05	EV STANDARD (9'X18') PARKING SPACE	10
LEVEL 05	STANDARD (9'X18') PARKING SPACE	90
LEVEL 04	ADA PARKING SPACE	2
LEVEL 04	EV ADA PARKING SPACE	2
LEVEL 04	EV STANDARD (9'X18') PARKING SPACE	10
LEVEL 04	STANDARD (9'X18') PARKING SPACE	69
LEVEL 03	ADA PARKING SPACE	2
LEVEL 03	EV ADA PARKING SPACE	2
LEVEL 03	EV STANDARD (9'X18') PARKING SPACE	8
LEVEL 03	STANDARD (9'X18') PARKING SPACE	86
LEVEL 02	ADA VAN PARKING SPACE	2
LEVEL 02	COMPACT (9'X18') PARKING SPACE	3
LEVEL 02	EV ADA PARKING SPACE	2
LEVEL 02	EV STANDARD (9'X18') PARKING SPACE	4
LEVEL 02	STANDARD (9'X18') PARKING SPACE	69
TOTAL PARKING SPACES		457

**REVISION HISTORY**

NO.	DESCRIPTION	DATE

**PROFESSIONAL SEALS**

**CLIENT**  
Weston Urban

**PROJECT**  
300 Main  
300 N Main Ave  
San Antonio, TX 78205

**PROJECT NUMBER**  
120008

**DRAWN BY**  
JS/KP

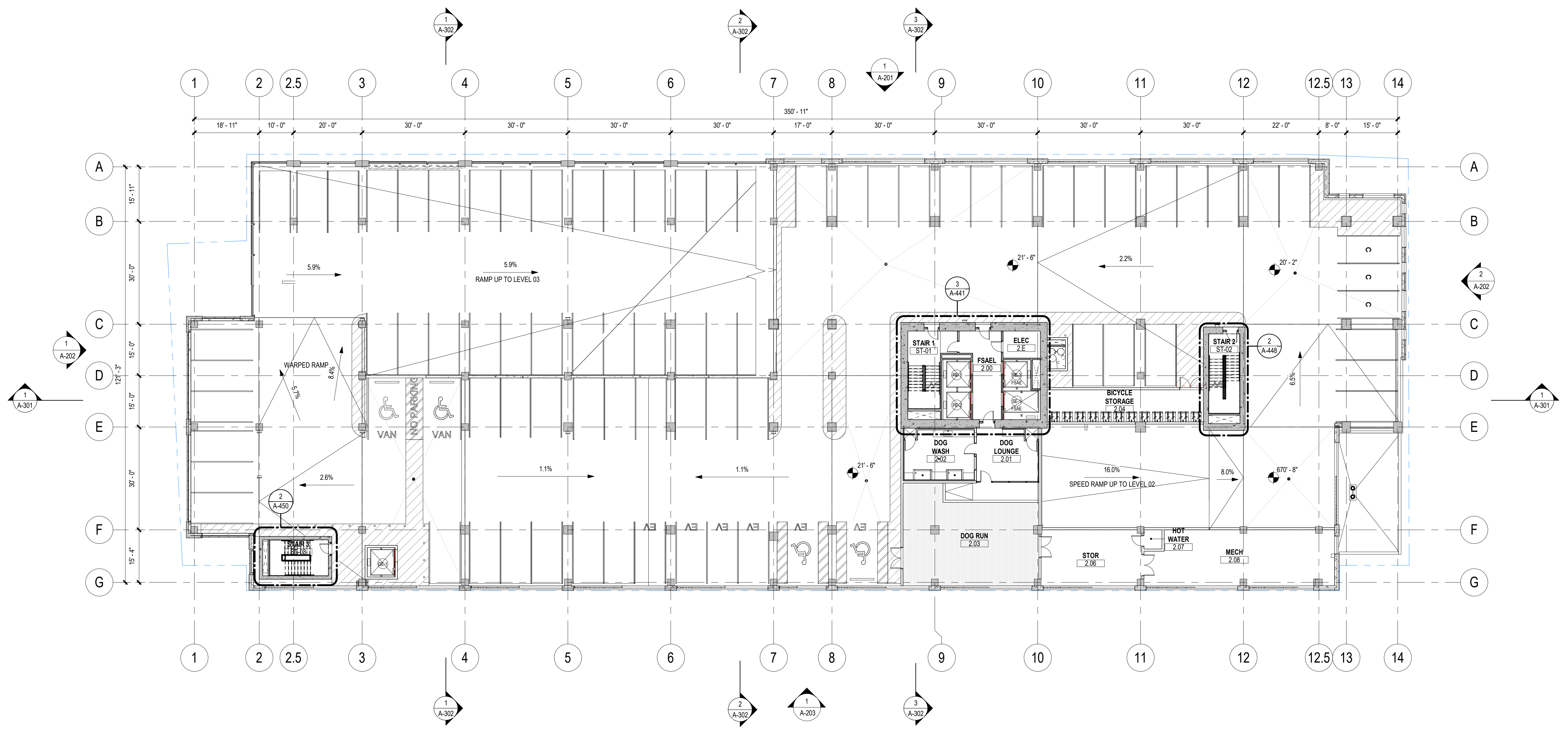
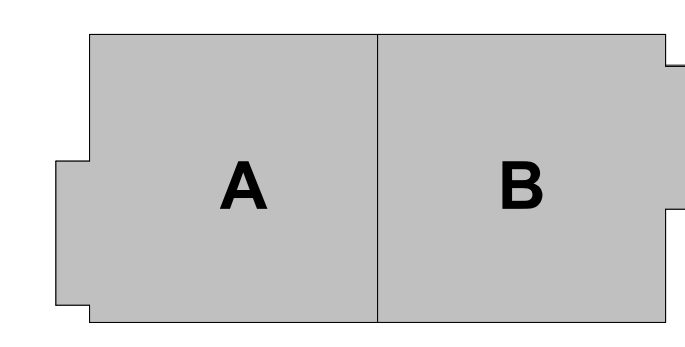
**CHECKED BY**  
BT

**ORIGINAL ISSUE**  
29 OCTOBER 2021

**SHEET NAME**  
ARCHITECTURAL - FLOOR PLAN -  
LEVEL 02

**SHEET NUMBER**  
A-102

**KEYPLAN**



**1 ARCHITECTURAL - FLOOR PLAN - LEVEL 02**  
SCALE: 1/16" = 1'-0"

W:\120008\120008-A-R20-jschwartz.Rvt  
 DATE PLOT: 7/12/2021 11:26:18 PM

CONSULTANT TEAM

**CIVIL**  
PAPE-DAWSON  
ENGINEERS INC.  
2000 NW LOOP 410  
SAN ANTONIO, TX 78213  
(210) 375-9010  
(512) 354-5288

**LANDSCAPE**  
CAMPBELL LANDSCAPE  
ARCHITECTURE  
608 WEST MONROE STREET  
UNIT D  
AUSTIN, TX 78704  
(512) 354-5288

**STRUCTURAL**  
ARCHITECTURAL ENGINEERS  
COLLABORATIVE  
123 PARLAND PLACE  
SAN ANTONIO, TX 78209  
(210) 890-4200

**MFP**  
BLUM CONSULTING  
ENGINEERS, INC.  
8144 WALNUT HILL LN  
SUITE 200  
DALLAS, TX 75231  
(214) 373-8222

PARKING

HWA PARKING  
9600 GREAT HILLS TRL.  
SUITE 150W  
AUSTIN, TX 78759  
(512) 306-8722

SYMBOL	DESCRIPTION
	MATCHLINE
	SHEET REFERENCE
	KEYED NOTE KEYED NOTES ONLY APPLY TO THIS SHEET
	PARTITION TAG REFER TO PARTITION SCHEDULE
	BUILDING SECTION TAG WALL SECTION TAG
	EXTERIOR ELEVATION TAG
	INTERIOR ELEVATION TAG
	PLAN REFERENCE TAG
	ROOM NAME ROOM NUMBER
	NEW DOOR WITH DOOR TAG REF. DOOR SCHED
	NEW WINDOW WITH WINDOW MARK REF. GLAZING ELEVATIONS
	COLUMN GRID DESIGNATIONS

NUMBER	DESCRIPTION

KEYED NOTES

NUMBER	DESCRIPTION

PARKING SCHEDULE BY LEVEL

Level	SPACE TYPE	QUANTITY
LEVEL 06	STANDARD (9'X18') PARKING SPACE	72
LEVEL 05	ADA PARKING SPACE	2
LEVEL 05	EV STANDARD (9'X18') PARKING SPACE	10
LEVEL 05	STANDARD (9'X18') PARKING SPACE	90
LEVEL 04	ADA PARKING SPACE	2
LEVEL 04	EV ADA PARKING SPACE	2
LEVEL 04	EV STANDARD (9'X18') PARKING SPACE	10
LEVEL 04	STANDARD (9'X18') PARKING SPACE	69
LEVEL 03	ADA PARKING SPACE	2
LEVEL 03	EV ADA PARKING SPACE	2
LEVEL 03	EV STANDARD (9'X18') PARKING SPACE	8
LEVEL 03	STANDARD (9'X18') PARKING SPACE	86
LEVEL 02	ADA VAN PARKING SPACE	2
LEVEL 02	COMPACT (9'X18') PARKING SPACE	3
LEVEL 02	EV ADA PARKING SPACE	2
LEVEL 02	EV STANDARD (9'X18') PARKING SPACE	4
LEVEL 02	STANDARD (9'X18') PARKING SPACE	69
TOTAL PARKING SPACES		457

REVISION HISTORY

REVISION	DESCRIPTION	DATE

PROFESSIONAL SEALS

CLIENT  
Weston Urban



PROJECT

300 Main  
300 N Main Ave  
San Antonio, TX 78205

PROJECT NUMBER  
120008

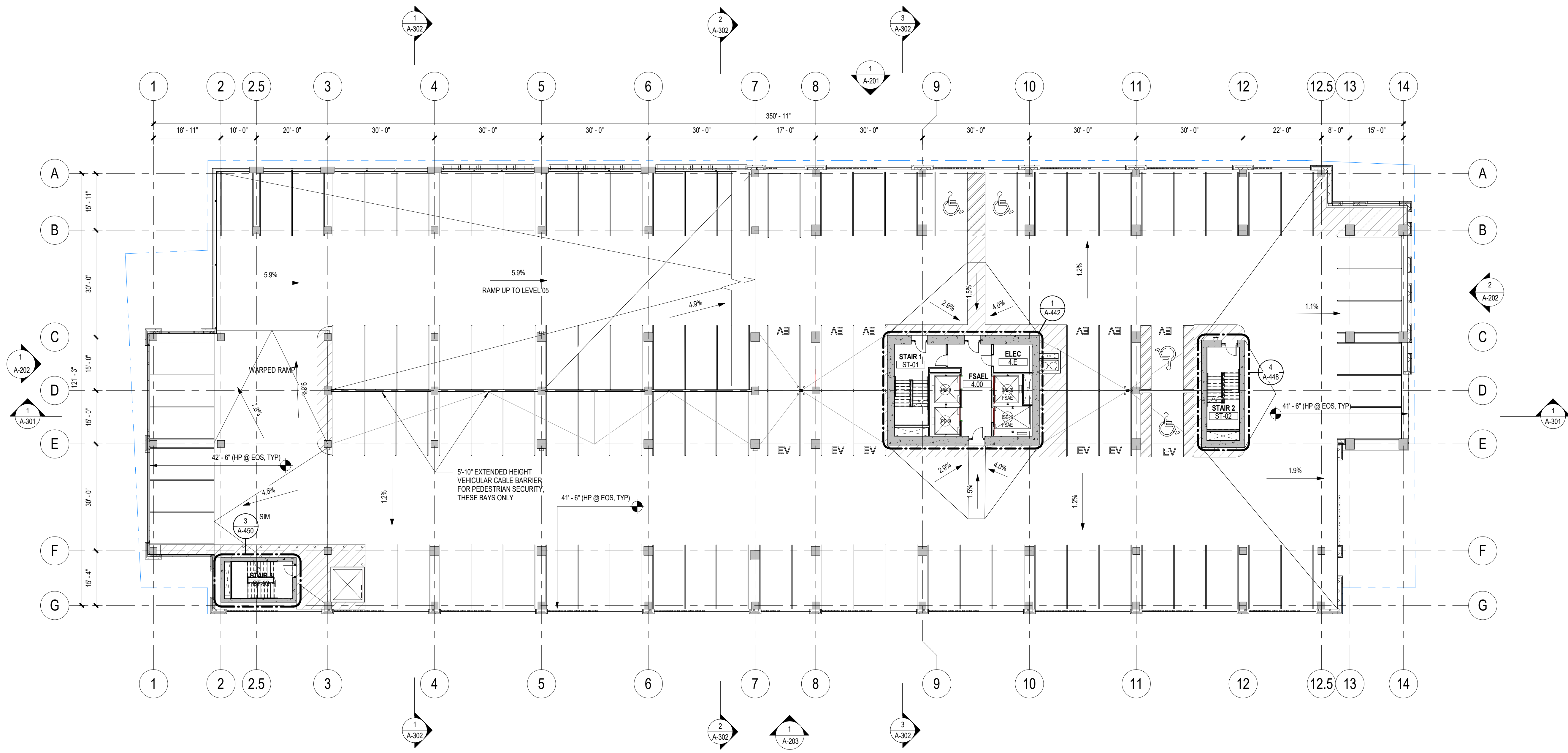
DRAWN BY  
JS/KP

CHECKED BY  
BT

ORIGINAL ISSUE  
29 OCTOBER 2021

SHEET NAME  
ARCHITECTURAL - FLOOR PLAN -  
LEVEL 04

SHEET NUMBER  
A-104



**1 ARCHITECTURAL - FLOOR PLAN - LEVEL 04**  
SCALE: 1/16" = 1'-0"

W:\120008\120008-AA-R20-jschwartz.Rvt  
 DATE PLOTTED: 7/12/2021 11:27:47 PM







Page Southerland Page, Inc.  
400 W. Cesar Chavez Street Suite 500  
Austin, TX 78701  
pagethink.com

TEL 512 472 6721  
FAX 512 477 3211

ARCHITECTURE / ENGINEERING / INTERIORS / PLANNING / CONSULTING  
Austin / Dallas / Denver / Houston / San Francisco / Washington DC /  
International Affiliate Offices

**CONSULTANT TEAM**

**CIVIL**  
PAPE-DAWSON  
ENGINEERS INC  
2000 NW LOOP 410  
SAN ANTONIO, TX 78213  
(210) 375-9010

**LANDSCAPE**  
CAMPBELL LANDSCAPE  
ARCHITECTURE  
608 WEST MONROE STREET  
UNIT D  
AUSTIN, TX 78704  
(512) 354-6288

**STRUCTURAL**  
ARCHITECTURAL ENGINEERS  
COLLABORATIVE  
123 PARLAND PLACE  
SAN ANTONIO, TX 78209  
(210) 890-4200

**MFP**  
BLUM CONSULTING  
ENGINEERS, INC  
8144 WALNUT HILL LN  
SUITE 200  
DALLAS, TX 75231  
(214) 373-8222

**PARKING**  
HWA PARKING  
9600 GREAT HILLS TRL.  
SUITE 150W  
AUSTIN, TX 78759  
(512) 306-8722

FLOOR PLAN LEGEND	
SYMBOL	DESCRIPTION
	MATCHLINE
	SHEET REFERENCE
	KEYED NOTE KEYED NOTES ONLY APPLY TO THIS SHEET
	PARTITION TAG REFER TO PARTITION SCHEDULE
	BUILDING SECTION TAG WALL SECTION TAG
	EXTERIOR ELEVATION TAG
	INTERIOR ELEVATION TAG
	PLAN REFERENCE TAG
	ROOM NAME ROOM NUMBER
	NEW DOOR WITH DOOR TAG REF DOOR SCHED
	NEW WINDOW WITH WINDOW MARK REF GLAZING ELEVATIONS
	COLUMN GRID DESIGNATIONS

**KEYED NOTES**

NUMBER	DESCRIPTION

**PARKING SCHEDULE BY LEVEL**

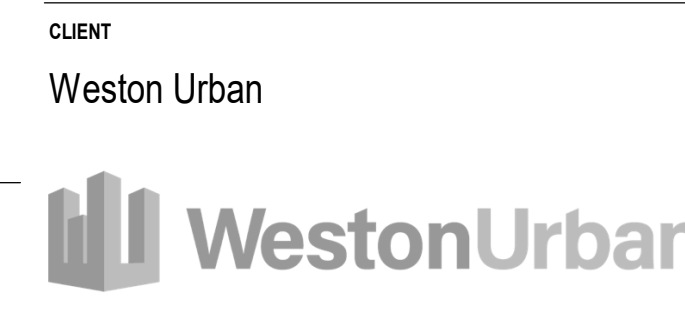
Level	SPACE TYPE	QUANTITY
LEVEL 06	STANDARD (9'X18') PARKING SPACE	72
LEVEL 05	ADA PARKING SPACE	2
LEVEL 05	EV ADA PARKING SPACE	2
LEVEL 05	EV STANDARD (9'X18') PARKING SPACE	10
LEVEL 05	STANDARD (9'X18') PARKING SPACE	90
LEVEL 04	ADA PARKING SPACE	2
LEVEL 04	EV ADA PARKING SPACE	2
LEVEL 04	EV STANDARD (9'X18') PARKING SPACE	10
LEVEL 04	STANDARD (9'X18') PARKING SPACE	69
LEVEL 03	ADA PARKING SPACE	2
LEVEL 03	EV ADA PARKING SPACE	2
LEVEL 03	EV STANDARD (9'X18') PARKING SPACE	8
LEVEL 03	STANDARD (9'X18') PARKING SPACE	86
LEVEL 02	ADA VAN PARKING SPACE	2
LEVEL 02	COMPACT (9'X18') PARKING SPACE	3
LEVEL 02	EV ADA PARKING SPACE	2
LEVEL 02	EV STANDARD (9'X18') PARKING SPACE	4
LEVEL 02	STANDARD (9'X18') PARKING SPACE	69
TOTAL PARKING SPACES		457

**REVISION HISTORY**

REVISION	DESCRIPTION	DATE

**PROFESSIONAL SEALS**

CLIENT  
Weston Urban



**PROJECT**  
**300 Main**  
300 N Main Ave  
San Antonio, TX 78205

PROJECT NUMBER  
120008

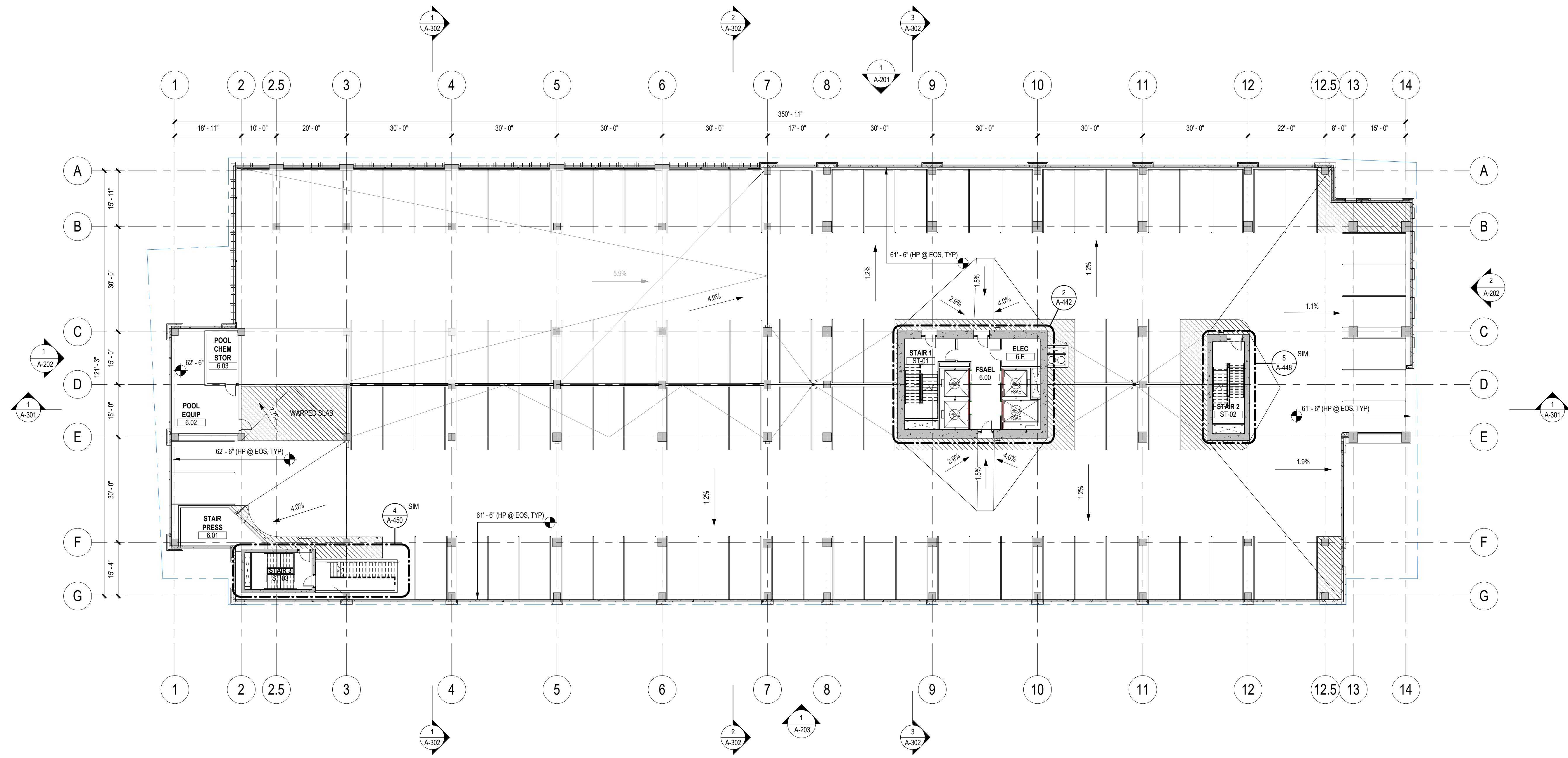
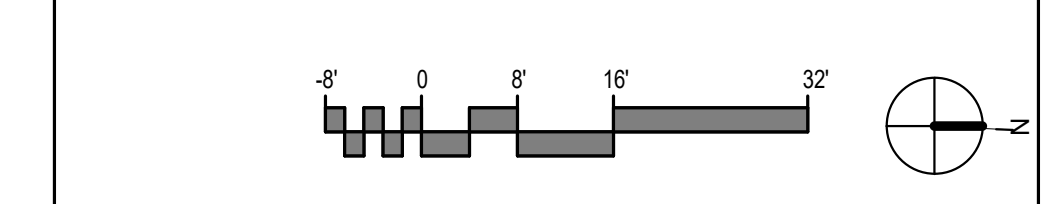
DRAWN BY  
JS/KP

CHECKED BY  
BT

ORIGINAL ISSUE  
29 OCTOBER 2021

SHEET NAME  
ARCHITECTURAL - FLOOR PLAN -  
LEVEL 06

SHEET NUMBER  
**A-106**



**1 ARCHITECTURAL - FLOOR PLAN - LEVEL 06**  
SCALE: 1/16" = 1'-0"

W:\120008\120008-A-R20-jschwartz.Rvt  
 DATE STAMP: 7/12/2021 11:29:03 PM



























Page Southerland Page, Inc.  
400 W. Cesar Chavez Street Suite 500  
Austin, TX 78701  
page@think.com

TEL 512 472 6721  
FAX 512 477 3211

ARCHITECTURE / ENGINEERING / INTERIORS / PLANNING / CONSULTING  
Austin / Dallas / Denver / Houston / San Francisco / Washington DC /  
International Affiliate Offices

**CONSULTANT TEAM**

<b>CIVIL</b> PAPE-DAWSON ENGINEERS INC 2000 NW LOOP 410 SAN ANTONIO, TX 78213 (210) 375-9010	<b>LANDSCAPE</b> CAMPBELL LANDSCAPE ARCHITECTURE 608 WEST MONROE STREET UNIT D AUSTIN, TX 78704 (512) 354-5288
---	--

<b>STRUCTURAL</b> ARCHITECTURAL ENGINEERS COLLABORATIVE 123 PARLAND PLACE SAN ANTONIO, TX 78209 (210) 890-4200	<b>MFP</b> BLUM CONSULTING ENGINEERS, INC 8144 WALNUT HILL LN SUITE 200 DALLAS, TX 75231 (214) 373-8222
---	---

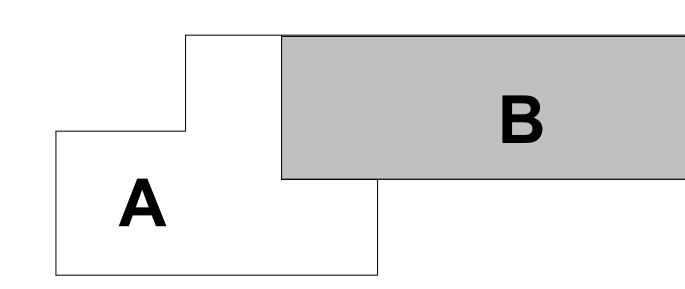
**PARKING**  
HWA PARKING  
9600 GREAT HILLS TRL.  
SUITE 150W  
AUSTIN, TX 78759  
(512) 306-8722

FLOOR PLAN LEGEND	
SYMBOL	DESCRIPTION
	MATCH LINE
	SHEET REFERENCE
	KEYED NOTE KEYED NOTES ONLY APPLY TO THIS SHEET
	PARTITION TAG REFER TO PARTITION SCHEDULE
	BUILDING SECTION TAG WALL SECTION TAG
	EXTERIOR ELEVATION TAG
	INTERIOR ELEVATION TAG
	PLAN REFERENCE TAG
	ROOM NAME
	ROOM NUMBER
	NEW DOOR WITH DOOR TAG REF DOOR SCHED
	NEW WINDOW WITH WINDOW MARK REF GLAZING ELEVATIONS
	COLUMN GRID DESIGNATIONS

**KEYED NOTES**

NUMBER	DESCRIPTION

**KEYPLAN**



**REVISION HISTORY**

NUMBER	DESCRIPTION	DATE

**PROFESSIONAL SEALS**

**CLIENT**  
Weston Urban



**PROJECT**

**300 Main**  
300 N Main Ave  
San Antonio, TX 78205

PROJECT NUMBER  
120008  
DRAWN BY  
JS/KP  
CHECKED BY  
BT  
ORIGINAL ISSUE  
29 OCTOBER 2021

SHEET NAME  
ARCHITECTURAL - FLOOR PLAN -  
LEVEL 30

**SHEET NUMBER**

**A-130**



**1 ARCHITECTURAL - FLOOR PLAN - LEVEL 30 - TIER 2**  
SCALE: 1/16" = 1'-0"

W:\120008\120008-A-R20-jschwartz.Rvt  
 DATE PLOT: 7/12/2021 1:33:30 PM



















1 2 2.5 3 4 5 6 7 8 9 10 11 12 12.5 13 14

**EXTERIOR ELEVATION LEGEND**

SYMBOL	DESCRIPTION
[Pattern]	INSULATED GLAZING, VISION (IG-1)
[Pattern]	INSULATING GLAZING, SPANDREL (IG-2)
[Pattern]	LAMINATED GLAZING AT GUARDRAILS (LG-1)
[Pattern]	BRICK MASONRY - MS-1 & MS-2 (RAIN SCREEN APPLICATION)
[Pattern]	BRICK MASONRY BRISE SOLEIL (MS-3)
[Pattern]	EXPOSED ARCHITECTURAL CONCRETE
[Pattern]	METAL COMPOSITE MATERIAL WALL PANEL (MCM-1)
[Pattern]	ALUMINUM SLATS (MP-1)
[Pattern]	POST-FIRE SMOKE REMOVAL
[Symbol]	INTERMITTENT STABILIZATION ANCHOR

**EXTERIOR GENERAL NOTES**

- REFER TO EXTERIOR ELEVATION LEGEND FOR MATERIAL TYPES SHOWN HERE.
- REFER TO A-300 SERIES FOR WALL SECTIONS AND A-500 SERIES FOR EXTERIOR DETAILS.
- REFER TO A-630 SERIES FOR GLAZING ELEVATIONS FOR DIMENSIONSTYPES AND GRAPHIC GLAZING SCHEDULE AT BASE AND TOWER LEVELS.
- INTERMITTANT STABILIZATION ANCHORS (ISA) TO ALIGN WITH DAVIT BASE LOCATIONS ON ROOF WITHIN 12" TOLERANCE. REFER TO ROOF PLAN FOR DAVIT BASE LOCATIONS.
- BUILDING FACADE MAINTENANCE EQUIPMENT LOCATIONS SHOWN DELINEATE A CONCEPTUAL EQUIPMENT INSTALLATION FOR GLAZED CURTAIN WALL CLEANING AND LIGHT BUILDING MAINTENANCE. FINAL DESIGN SHALL BE SUPPLIED BY THE EQUIPMENT MANUFACTURER TO ENSURE THE DESIGN'S COMPATIBILITY WITH THE EQUIPMENT SELECTIONS AND FINAL INSTALLATION.

Page Southerland Page, Inc.  
400 W. Cesar Chavez Street Suite 500  
Austin, TX 78701  
pagethink.com  
TEL 512 472 6721  
FAX 512 477 3211

CONSULTANT TEAM

<b>CIVIL</b> PAPE-DAWSON ENGINEERS INC. 2000 NW LOOP 410 SAN ANTONIO, TX 78213 (210) 375-9010 (512) 354-6398	<b>LANDSCAPE</b> CAMPBELL LANDSCAPE ARCHITECTURE 608 WEST MONROE STREET UNIT D AUSTIN, TX 78704 (512) 354-6398
<b>STRUCTURAL</b> ARCHITECTURAL ENGINEERS COLLABORATIVE 123 PARLAND PLACE SAN ANTONIO, TX 78209 (210) 850-4000	<b>MFP</b> BLUM CONSULTING ENGINEERS, INC. 8144 WALNUT HILL LN SUITE 200 DALLAS, TX 75231 (214) 373-8222

**PARKING**  
HWA PARKING  
9600 GREAT HILLS TRL.  
SUITE 150W  
AUSTIN, TX 78759  
(512) 306-8722

**KEYPLAN**

REVISION	DESCRIPTION	DATE

**CLIENT**

Weston Urban



**PROJECT**  
300 Main  
300 N Main Ave  
San Antonio, TX 78205  
  
PROJECT NUMBER  
120008  
DRAWN BY  
JS/DR  
CHECKED BY  
BT  
ORIGINAL ISSUE  
GMP  
29 OCTOBER 2021

SHEET NAME  
ARCHITECTURAL - EXTERIOR ELEVATIONS

SHEET NUMBER  
**A-203**



**1 ARCHITECTURAL EXTERIOR ELEVATION - EAST**  
SCALE: 1/16" = 1'-0"



Page Southerland Page, Inc.  
 400 W. Cesar Chavez Street Suite 500  
 Austin, TX 78701  
 pagethink.com  
 TEL 512 472 6721  
 FAX 512 477 3211  
 ARCHITECTURE / ENGINEERING / INTERIORS / PLANNING / CONSULTING  
 Austin / Dallas / Denver / Houston / San Francisco / Washington DC /  
 International Affiliate Offices

**CONSULTANT TEAM**

<b>CIVIL</b> PAPE-DAWSON ENGINEERS INC. 2000 NW LOOP 410 SAN ANTONIO, TX 78213 (210) 375-9010	<b>LANDSCAPE</b> CAMPBELL LANDSCAPE ARCHITECTURE 608 WEST MONROE STREET UNIT D AUSTIN, TX 78704 (512) 354-5298
<b>STRUCTURAL</b> ARCHITECTURAL ENGINEERS COLLABORATIVE 123 PARLAND PLACE SAN ANTONIO, TX 78209 (210) 860-4000	<b>M/E/P</b> BLUM CONSULTING ENGINEERS, INC. 8144 WALNUT HILL LN SUITE 200 DALLAS, TX 75231 (214) 373-8222
<b>PARKING</b> HWA PARKING 9600 GREAT HILLS TRL. SUITE 150W AUSTIN, TX 78759 (512) 306-8722	

**KEYPLAN**

REVISION	DESCRIPTION	DATE



**1 ARCHITECTURAL EXTERIOR AXONOMETRIC - SOUTH WEST**  
 SCALE:

**CLIENT**  
Weston Urban

**WestonUrban**

**PROJECT**  
 300 Main  
 300 N Main Ave  
 San Antonio, TX 78205  
**PROJECT NUMBER**  
 120008  
**DRAWN BY**  
 JS/DR  
**CHECKED BY**  
 BT  
**ORIGINAL ISSUE**  
 GMP  
 29 OCTOBER 2021

**SHEET NAME**  
 ARCHITECTURAL - EXTERIOR  
 AXONOMETRIC  
**SHEET NUMBER**  
**A-204**

FILE NAME: W:\120008\120008-A-P20-jschwartz.Rvt  
 USER: jschwartz  
 DATE/TIME: 7/13/2021 10:39:26 AM



Page Southerland Page, Inc.  
400 W. Cesar Chavez Street Suite 500  
Austin, TX 78701  
pagethink.com

TEL 512 472 6721  
FAX 512 477 3211

ARCHITECTURE / ENGINEERING / INTERIORS / PLANNING / CONSULTING  
Austin / Dallas / Denver / Houston / San Francisco / Washington DC /  
International Affiliate Offices

#### CONSULTANT TEAM

##### CIVIL

PAPE DAWSON  
ENGINEERS INC.  
2000 NW LOOP 410  
SAN ANTONIO, TX 78213  
(210) 375-9010

##### LANDSCAPE

CAMPBELL LANDSCAPE  
ARCHITECTURE  
608 WEST MONROE STREET  
UNIT D  
AUSTIN, TX 78704  
(512) 354-6288

##### STRUCTURAL

ARCHITECTURAL ENGINEERS  
COLLABORATIVE  
123 PARLAND PLACE  
SAN ANTONIO, TX 78209  
(210) 890-4000

##### MEP

BLUM CONSULTING  
ENGINEERS, INC.  
8144 WALNUT HILL LN  
SUITE 200  
DALLAS, TX 75231  
(214) 373-8222

##### PARKING

HWA PARKING  
9600 GREAT HILLS TRL  
SUITE 150W  
AUSTIN, TX 78759  
(512) 306-8722

#### KEYPLAN

#### REVISION HISTORY

REVISION	DESCRIPTION	DATE

PROFESSIONAL SEALS

#### CLIENT

Weston Urban



#### PROJECT

**300 Main**  
300 N Main Ave  
San Antonio, TX 78205

#### PROJECT NUMBER

120008

#### DRAWN BY

JS/DR

#### CHECKED BY

BT

#### ORIGINAL ISSUE

GMP

29 OCTOBER 2021

#### SHEET NAME

ARCHITECTURAL - EXTERIOR  
AXONOMETRIC

#### SHEET NUMBER

**A-205**



# 1 ARCHITECTURAL EXTERIOR AXONOMETRIC - NORTH EAST

SCALE:

FILE PATH: W:\120008\120008-A-R20-jchwartz.rvt  
USER NAME: jschwartz  
DATE/TIME: 7/13/2021 10:43:12 AM







CONSULTANT TEAM

**CIVIL**  
PAPE-DAWSON  
ENGINEERS INC.  
2000 NW LOOP 410  
SAN ANTONIO, TX 78213  
(210) 375-9010

**LANDSCAPE**  
CAMPBELL LANDSCAPE  
ARCHITECTURE  
608 WEST MONROE STREET  
UNIT D  
AUSTIN, TX 78704  
(512) 354-6288

**STRUCTURAL**  
ARCHITECTURAL ENGINEERS  
COLLABORATIVE  
123 PARLAND PLACE  
SAN ANTONIO, TX 78209  
(210) 890-4200

**MEP**  
BLUM CONSULTING  
ENGINEERS, INC.  
8144 WALNUT HILL LN  
SUITE 200  
DALLAS, TX 75231  
(214) 373-8222

**PARKING**  
HWA PARKING  
9600 GREAT HILLS TRL.  
SUITE 150W  
AUSTIN, TX 78759  
(512) 306-8722

KEYPLAN

REVISION HISTORY

REVISION	DESCRIPTION	DATE

CLIENT  
Weston Urban



PROJECT

300 Main  
300 N Main Ave  
San Antonio, TX 78205

PROJECT NUMBER  
120008

DRAWN BY  
JS

CHECKED BY  
BT

ORIGINAL ISSUE  
GMP  
29 OCTOBER 2021

SHEET NAME  
ARCHITECTURAL - EXTERIOR COLOR  
PERSPECTIVES

SHEET NUMBER

A-207



SOUTH-EAST TOWER FACADE, ABOVE SKYDECK LOOKING NORTH-WEST



WEST TOWER PERSPECTIVE, LOOKING EAST



ENLARGED TOWER FACADE, SOUTH-WEST



OVERALL SOUTH-WEST BUILDING PERSPECTIVE, LOOKING NORTH-EAST





GROUND LEVEL, SW CORNER - INTERSECTION OF MAIN AVE & TRAVIS ST.



GROUND LEVEL, SE CORNER - INTERSECTION OF SOLEDAD ST. & TRAVIS ST.



GROUND LEVEL, NE CORNER - INTERSECTION OF SOLEDAD ST. & PECAN ST.



GROUND LEVEL, NW CORNER - INTERSECTION OF MAIN AVE & PECAN ST.

Page Southerland Page, Inc.  
400 W. Cesar Chavez Street Suite 500  
Austin, TX 78701  
pagesthink.com  
TEL: 512 472 8721  
FAX: 512 477 3211

ARCHITECTURE / ENGINEERING / INTERIORS / PLANNING / CONSULTING  
Austin / Dallas / Denver / Houston / San Francisco / Washington DC / International Affiliate Offices

CONSULTANT TEAM

**CIVIL**  
PAPE-DAWSON  
ENGINEERS INC.  
2000 NW LOOP 410  
SAN ANTONIO, TX 78213  
(210) 375-9010

**LANDSCAPE**  
CAMPBELL LANDSCAPE  
ARCHITECTURE  
608 WEST MONROE STREET  
UNIT D  
AUSTIN, TX 78704  
(512) 354-5288

**STRUCTURAL**  
ARCHITECTURAL ENGINEERS  
COLLABORATIVE  
123 PARLAND PLACE  
SAN ANTONIO, TX 78209  
(210) 850-4000

**MEP**  
BLUM CONSULTING  
ENGINEERS, INC.  
6144 WALNUT HILL LN  
SUITE 200  
DALLAS, TX 75231  
(214) 373-8222

**PARKING**  
HWA PARKING  
9600 GREAT HILLS TRL.  
SUITE 150W  
AUSTIN, TX 78759  
(512) 306-8722

KEYPLAN

REVISION HISTORY

REVISION	DESCRIPTION	DATE

CLIENT  
Weston Urban



PROJECT  
**300 Main**  
300 N Main Ave  
San Antonio, TX 78205  
PROJECT NUMBER  
120008

DRAWN BY  
JS  
ORIGINAL ISSUE  
GMP  
29 OCTOBER 2021  
CHECKED BY  
BT

SHEET NAME  
ARCHITECTURAL - EXTERIOR COLOR  
PERSPECTIVES

SHEET NUMBER  
**A-208**



Page Southerland Page, Inc.  
400 W. Cesar Chavez Street Suite 500  
Austin, TX 78701  
page@psp.com

Tel. 512 472 6721  
Fax 512 477 3211

ARCHITECTURE / ENGINEERING / INTERIORS / PLANNING / CONSULTING  
Austin / Dallas / Denver / Houston / San Francisco / Washington DC /  
International Affiliate Offices

CONSULTANT TEAM

<b>CIVIL</b> PAPE-DAWSON ENGINEERS INC. 2000 NW LOOP 410 SAN ANTONIO, TX 78213 (210) 375-9010	<b>LANDSCAPE</b> CAMPBELL LANDSCAPE ARCHITECTURE 608 WEST MONROE STREET UNIT D AUSTIN, TX 78704 (512) 354-5288
--	--

<b>STRUCTURAL</b> ARCHITECTURAL ENGINEERS COLLABORATIVE 123 PARLAND PLACE SAN ANTONIO, TX 78209 (210) 890-4000	<b>MEP</b> BLUM CONSULTING ENGINEERS, INC. 8144 WALNUT HILL LN SUITE 200 DALLAS, TX 75231 (214) 373-8222
---	--

**PARKING**  
HWA PARKING  
9600 GREAT HILLS TRL.  
SUITE 150W  
AUSTIN, TX 78759  
(512) 306-8722



KEYPLAN

REVISION HISTORY

REVISION	DESCRIPTION	DATE

PROFESSIONAL SEALS

CLIENT  
Weston Urban



PROJECT

300 Main  
300 N Main Ave  
San Antonio, TX 78205

PROJECT NUMBER  
120008  
DRAWN BY  
JS  
CHECKED BY  
BT

ORIGINAL ISSUE  
GMP  
29 OCTOBER 2021

SHEET NAME  
ARCHITECTURAL - EXTERIOR COLOR  
PERSPECTIVES

SHEET NUMBER

A-208<sub>x</sub>





**Brick - Podium**  
**Acme: Dark Baja Blend - Baja Blend - Medium Grey**

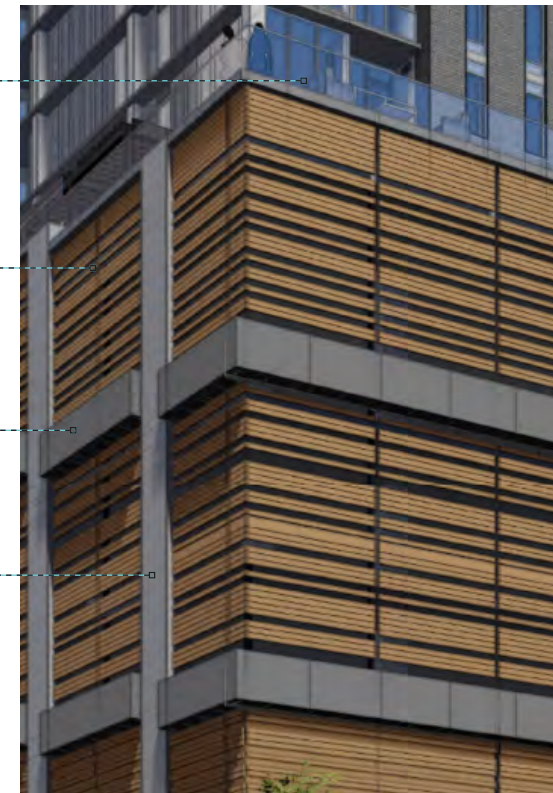


**Brick - Tower**  
**Acme: Westchester**



**Stucco - Elevator Overrun**

glass railing  
 metal extrusions - painted  
 spacing varies  
 insulated planter boxes clad in  
 painted metal  
 exposed concrete columns



**SW corner Garage Cladding**

glass railing  
 podium brick  
 brick pilaster  
 brise soleil of  
 staggered brick  
 elastomeric coating over  
 structural concrete



**Typ Garage Cladding**

glass railing  
 elastomeric coating over  
 structural concrete



**Typ Tower Cladding**

tower brick  
 metal panel to  
 match window  
 extrusions  
 elastomeric coating over  
 structural concrete



**Typ Tower Cladding**



**CONSULTANT TEAM**

CIVIL ENGINEERS INC.	LANDSCAPE ARCHITECTURE	MEP ENGINEERS INC.
PAPE DAWSON ENGINEERS INC. 2000 NW LOOP 410 SAN ANTONIO, TX 78213 (210) 375-9010	CAMPBELL LANDSCAPE ARCHITECTURE 608 WEST MONROE STREET UNIT D AUSTIN, TX 78704 (512) 384-4289	BLUM CONSULTING ENGINEERS INC. 8144 WALNUT HILL LN SUITE 200 DALLAS, TX 75231 (214) 373-8222

## LIGHT SCHEDULE

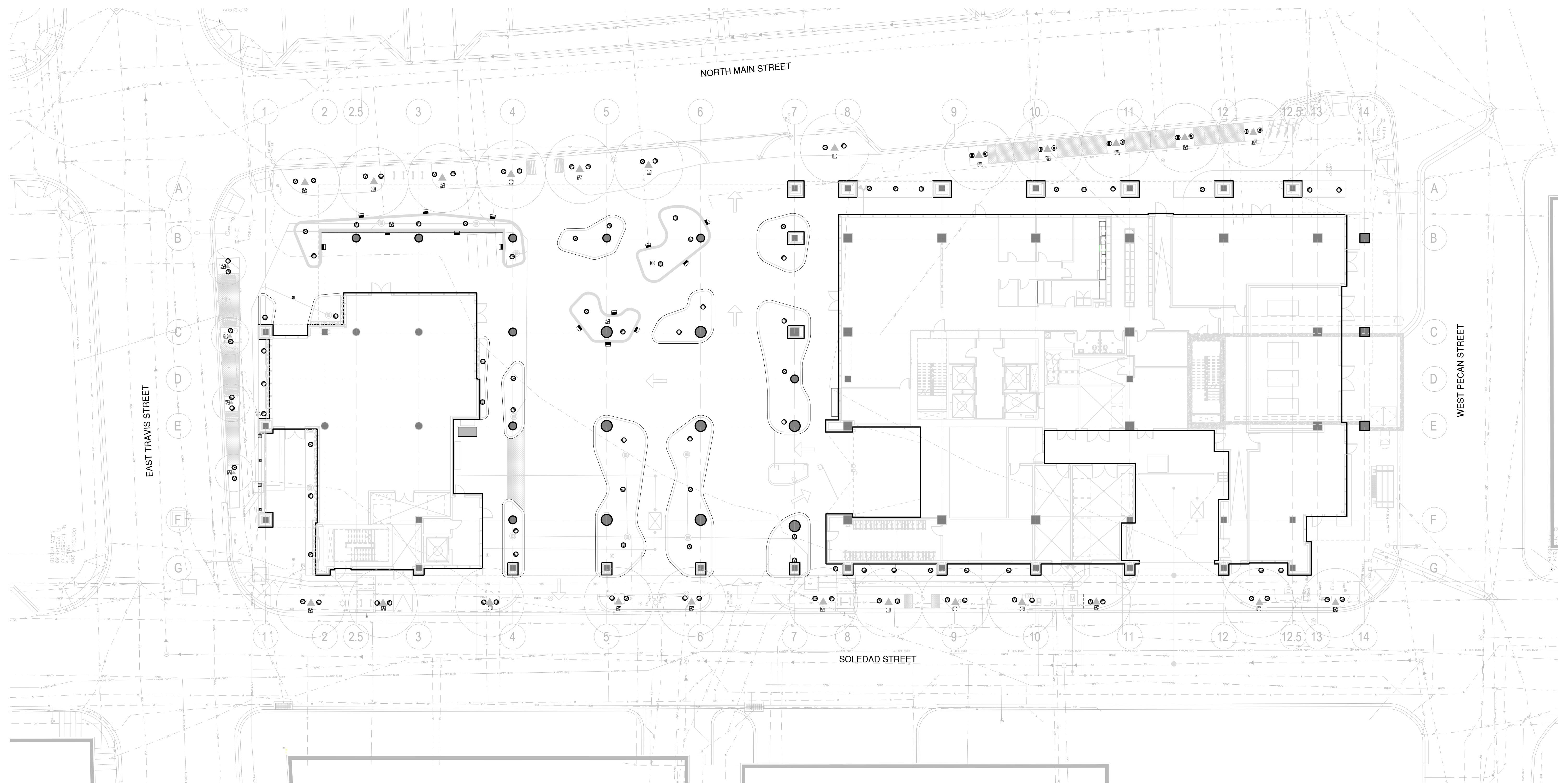
SYMBOL	#	ITEM	MANUFACTURER	COLOR
■	L1	EXTERIOR RECESSED WALL LIGHT	FX LUMINAIRE A-HS WALL LIGHT <a href="https://www.fx.com/product/wall-and-step-lights/line-voltage/a-hs">https://www.fx.com/product/wall-and-step-lights/line-voltage/a-hs</a>	BRONZE
○	L2	STAKE MOUNTED UPLIGHT W/ SHIELD	FX LUMINAIRE OZ LED UPLIGHT <a href="https://www.fx.com/product/up-lights/designer/oz">https://www.fx.com/product/up-lights/designer/oz</a>	BRONZE
⊙	L3	FLUSH MOUNTED SURFACE UPLIGHT	FX LUMINAIRE KT IN-GRADE LIGHT <a href="https://www.fx.com/product/in-grade-and-well-lights-hardscapes/designer/kt">https://www.fx.com/product/in-grade-and-well-lights-hardscapes/designer/kt</a>	BRONZE
⊖	L4	GFCI BOLLARD	ARLINGTON GARD-N-POST - 19.5" LOW PROFILE OUTDOOR LANDSCAPE LIGHTING POST ENCLOSURE W/ OUTLET COVER - GPD19BR <a href="http://www.aifittings.com/catalog/gard-n-post/19-inch-low-profile-enclosure-with-built-in-cover/GPD19BR">http://www.aifittings.com/catalog/gard-n-post/19-inch-low-profile-enclosure-with-built-in-cover/GPD19BR</a>	BLACK Note - Bottom of GFCI shall be 6" above finish grade
■	L5	WIDE ANGLED UPLIGHT W/ SHIELD	FX LUMINAIRE LC LED UPLIGHT <a href="https://www.fx.com/product/up-lights/designer/lc">https://www.fx.com/product/up-lights/designer/lc</a>	BRONZE
⊖	L6	FLUSH WALL MOUNTED GFCI	ARLINGTON IN BOX WEATHERPROOF -IN-USE- RECESSED GFCI BOX <a href="http://www.aifittings.com/landing/weatherproof/">http://www.aifittings.com/landing/weatherproof/</a>	BRONZE
⊙	L7	POOL LIGHTS	PENDING SUBMITTAL BY POOL CONTRACTOR	

**NOTES:**

- PROVIDE LIGHTING PER PLAN.
- PROVIDE LIGHTING AT ALL SIGN LOCATIONS PROPOSED BY ARCHITECT.
- CONTRACTOR TO VERIFY EX. POWER TIE-IN LOCATIONS AND ELECTRICAL CONDUITS RUN TO ALL PROPOSED LIGHTING LOCATIONS.
- CONTRACTOR TO CONFIRM FINAL LAYOUT OF ALL LIGHTING FIXTURES IN FIELD WITH L.A. APPROVAL PRIOR TO FIXTURE INSTALLATION.
- \*COLOR TEMP SHALL BE 2700 OR 3000 AND SHALL BE CONSISTENT FOR ALL SITE LIGHTING FIXTURES.
- ALL FIXTURES SHALL BE DIMMABLE.
- PLANS FOR SCHEMATIC PURPOSE ONLY. LIGHTING DESIGNER TO CONFIRM PHOTOMETRICS ARE COMPLIANT WITH ALL BUILDING CODES AND STANDARDS.

**GENERAL FIXTURE NOTE:**

PROVIDE SHOP DRAWINGS & COLOR / FINISH SAMPLE CHIPS FOR ALL FIXTURES FOR L.A. APPROVAL



**KEYPLAN**

**REVISION HISTORY**

**REVISION DESCRIPTION DATE**

**PROFESSIONAL SEALS**

**CLIENT**  
 Weston Urban



**PROJECT**

**300 MAIN**  
 300 N Main Ave  
 San Antonio, TX 78205

**PROJECT NUMBER**  
 120008  
**DRAWN BY** VJ SK **CHECKED BY** CC  
**ORIGINAL ISSUE**  
 GMP  
 29 OCTOBER 2021

**SHEET NAME**

LANDSCAPE - LIGHTING PLAN - GROUND LEVEL

**SHEET NUMBER**

L-600

1 LIGHTING PLAN - LEVEL 01

SCALE  
 1" = 16'





CONSULTANT TEAM

CIVIL	LANDSCAPE
PAPE DAWSON ENGINEERS INC. 2000 NW LOOP 415 SAN ANTONIO, TX 78213 (210) 375-6910	CAMPBELL LANDSCAPE ARCHITECTURE 608 WEST MONROE STREET UNIT D AUSTIN, TX 78704 (512) 354-8288
STRUCTURAL	MEP
ARCHITECTURAL ENGINEERS COLLABORATIVE 123 PARLAND PLACE SAN ANTONIO, TX 78209 (210) 895-4200	BLUM CONSULTING ENGINEERS, INC. 8144 WALNUT HILL LN SUITE 200 DALLAS, TX 75231 (214) 373-8222

LIGHT SCHEDULE

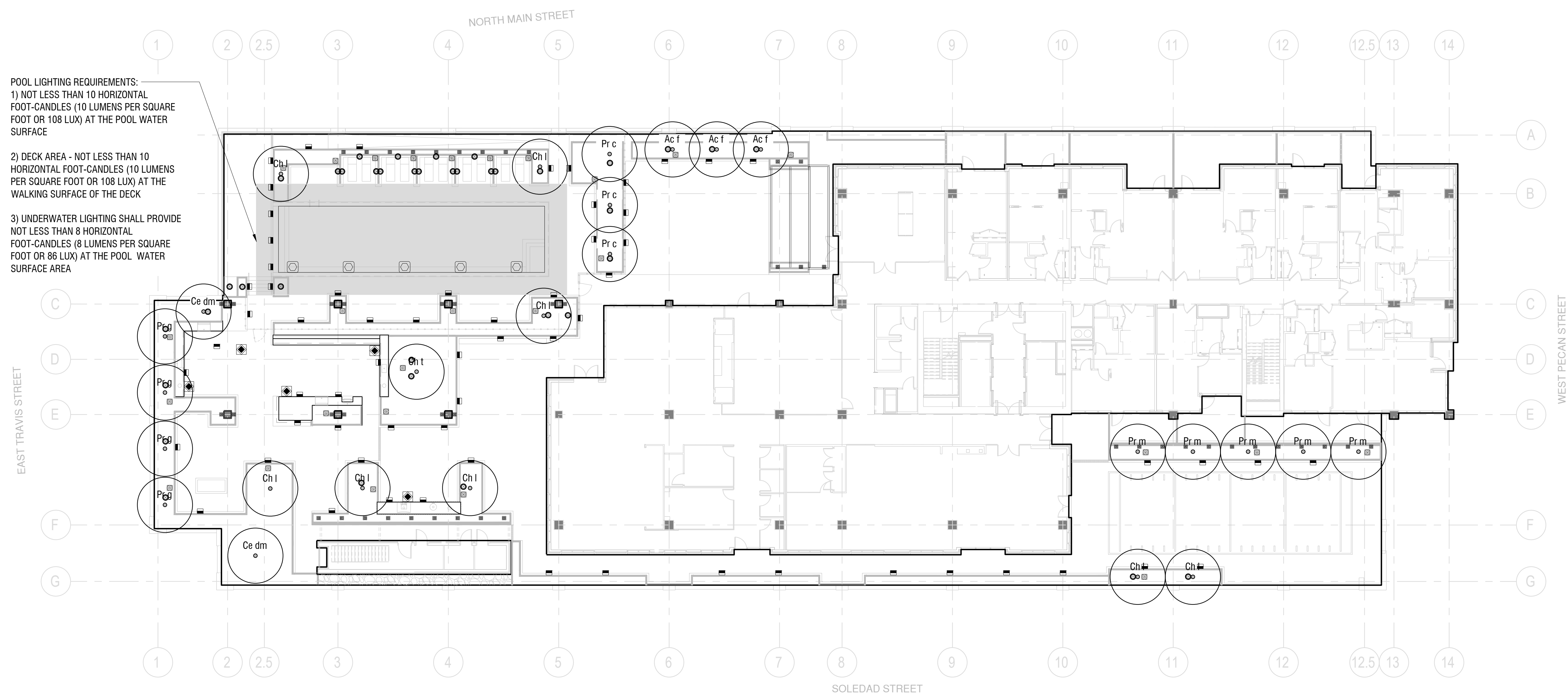
SYMBOL	#	ITEM	MANUFACTURER	COLOR
■	L1	EXTERIOR RECESSED WALL LIGHT	FX LUMINAIRE A-HS WALL LIGHT <a href="https://www.fx.com/product/wall-and-step-lights/line-voltage/a-hs">https://www.fx.com/product/wall-and-step-lights/line-voltage/a-hs</a>	BRONZE
●	L2	STAKE MOUNTED UPLIGHT W/ SHIELD	FX LUMINAIRE OZ LED UPLIGHT <a href="https://www.fx.com/product/up-lights/designer/oz">https://www.fx.com/product/up-lights/designer/oz</a>	BRONZE
●	L3	FLUSH MOUNTED SURFACE UPLIGHT	FX LUMINAIRE KT IN-GRADE LIGHT <a href="https://www.fx.com/product/in-grade-and-well-lights-hardscapes/designer/kt">https://www.fx.com/product/in-grade-and-well-lights-hardscapes/designer/kt</a>	BRONZE
■	L4	GFCI BOLLARD	ARLINGTON GARD-N-POST - 19.5" LOW PROFILE OUTDOOR LANDSCAPE LIGHTING POST ENCLOSURE W/ OUTLET COVER - GPD19BR <a href="http://www.allthings.com/catalog/gard-n-post/19-inch-low-profile-enclosure-wi-th-built-in-cover/GPD19BR">http://www.allthings.com/catalog/gard-n-post/19-inch-low-profile-enclosure-wi-th-built-in-cover/GPD19BR</a>	BLACK Note - Bottom of GFCI shall be 6" above finish grade
■	L5	WIDE ANGLED UPLIGHT W/ SHIELD	FX LUMINAIRE LC LED UPLIGHT <a href="https://www.fx.com/product/up-lights/designer/lc">https://www.fx.com/product/up-lights/designer/lc</a>	BRONZE
■	L6	FLUSH WALL MOUNTED GFCI	ARLINGTON IN BOX WEATHERPROOF -IN-USE- RECESSED GFCI BOX <a href="http://www.allthings.com/landing/weatherproof/">http://www.allthings.com/landing/weatherproof/</a>	BRONZE
☉	L7	POOL LIGHTS	PENDING SUBMITTAL BY POOL CONTRACTOR	

NOTES:

- 1. PROVIDE LIGHTING PER PLAN.
- 2. PROVIDE LIGHTING AT ALL SIGN LOCATIONS PROPOSED BY ARCHITECT.
- 3. CONTRACTOR TO VERIFY EX. POWER TIE-IN LOCATIONS AND ELECTRICAL CONDUITS RUN TO ALL PROPOSED LIGHTING LOCATIONS.
- 4. CONTRACTOR TO CONFIRM FINAL LAYOUT OF ALL LIGHTING FIXTURES IN FIELD WITH L.A. APPROVAL PRIOR TO FIXTURE INSTALLATION.
- 5. \*COLOR TEMP SHALL BE 2700 OR 3000 AND SHALL BE CONSISTENT FOR ALL SITE LIGHTING FIXTURES.
- 6. ALL FIXTURES SHALL BE DIMMABLE.
- 7. PLANS FOR SCHEMATIC PURPOSE ONLY. LIGHTING DESIGNER TO CONFIRM PHOTOMETRICS ARE COMPLIANT WITH ALL BUILDING CODES AND STANDARDS.
- 8. POOL LIGHTING SHALL BE COMPLIANT WITH ALL LOCAL, STATE AND FEDERAL POOL CODES AND REGULATIONS.

GENERAL FIXTURE NOTE:

PROVIDE SHOP DRAWINGS & COLOR / FINISH SAMPLE CHIPS FOR ALL FIXTURES FOR L.A. APPROVAL



POOL LIGHTING REQUIREMENTS:  
1) NOT LESS THAN 10 HORIZONTAL FOOT-CANDELES (10 LUMENS PER SQUARE FOOT OR 108 LUX) AT THE POOL WATER SURFACE  
2) DECK AREA - NOT LESS THAN 10 HORIZONTAL FOOT-CANDELES (10 LUMENS PER SQUARE FOOT OR 108 LUX) AT THE WALKING SURFACE OF THE DECK  
3) UNDERWATER LIGHTING SHALL PROVIDE NOT LESS THAN 8 HORIZONTAL FOOT-CANDELES (8 LUMENS PER SQUARE FOOT OR 86 LUX) AT THE POOL WATER SURFACE AREA

1 LIGHTING PLAN - AMENITY DECK



REVISION HISTORY

REVISION DESCRIPTION	DATE
PROFESSIONAL SEALS	

CLIENT

Weston Urban



PROJECT

300 MAIN  
300 N Main Ave  
San Antonio, TX 78205

PROJECT NUMBER

120008

DRAWN BY

VJ, SK

CHECKED BY

CC

ORIGINAL ISSUE

100% CONSTRUCTION DOCUMENTS  
09 JULY 2021

SHEET NAME

LANDSCAPE - LIGHTING PLAN - AMENITY DECK

SHEET NUMBER

L-601

FILE NAME: \\3303\shared\dwg\2021\1001\Lighting\1001-0200.dwg  
USER NAME: JESSICA.L.H.  
DATE STAMP: 10/22/21 4:54 PM