

## CENTRAL PROPERTIES LOGO



### AFFORDABLE HOUSING PROPERTIES

The Annex Group® established the Central logo in 2023 for affordable housing developments being added to the portfolio that are competing in the same markets as a Union banded community.

### UNION

Union logo is specific to affordable housing properties.



YELLOW PANTONE 129C | F4BF2E



NAVY PANTONE 7540C | 3F4B6B



### CENTRAL PROPERTY GUIDELINES

Exterior signage is to be horizontal.  
The only graphic that can be lifted from the logo box. Keep in mind that the registered trademark symbol is to be placed in the upper right hand corner.

Logo may be used as a transparency or set over graphics and photography that has obtained the correct licenses for use.

### COMMUNITY TAGS AND PHRASES:

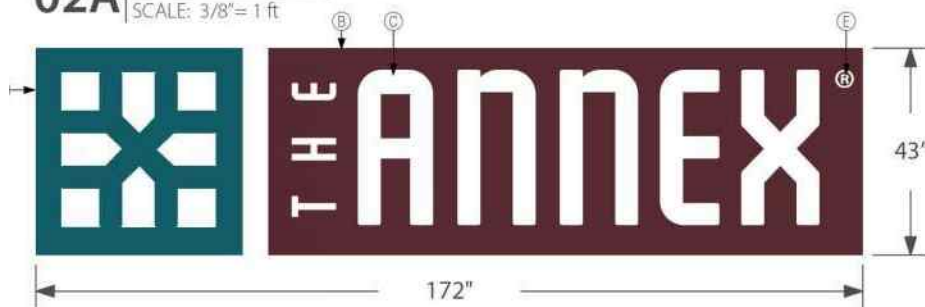
#HOMEATCENTRAL

CREATE HOME WITHIN COMMUNITY

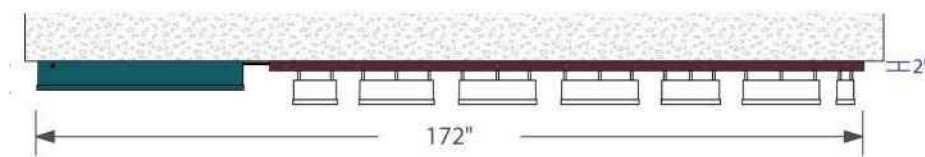
Properties should never use "THE" in naming the property (ex: Central at Old Concord and Central at South Haymarket)

# The Annex® Exterior Horizontal Sign

**02A** ILLUMINATED BUILDING ID SIGN, FRONT VIEW  
SCALE: 3/8" = 1 ft



**02B** ILLUMINATED BUILDING ID SIGN, TOP VIEW  
SCALE: 3/8" = 1 ft



**02C**

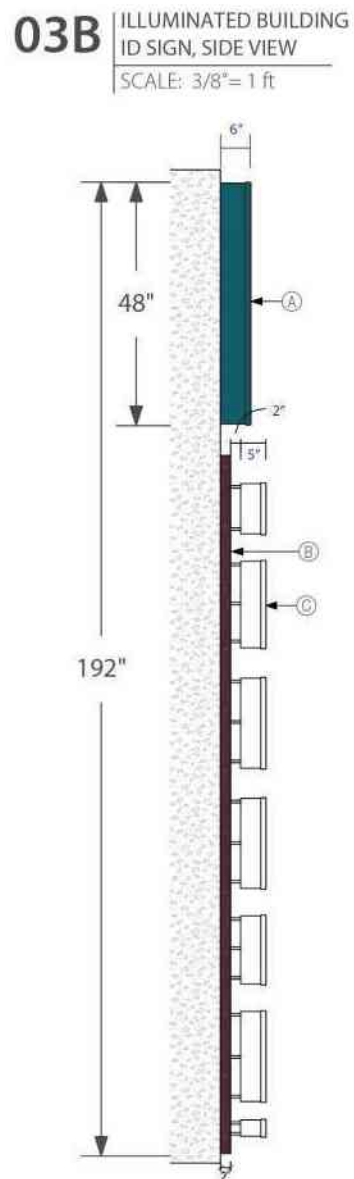
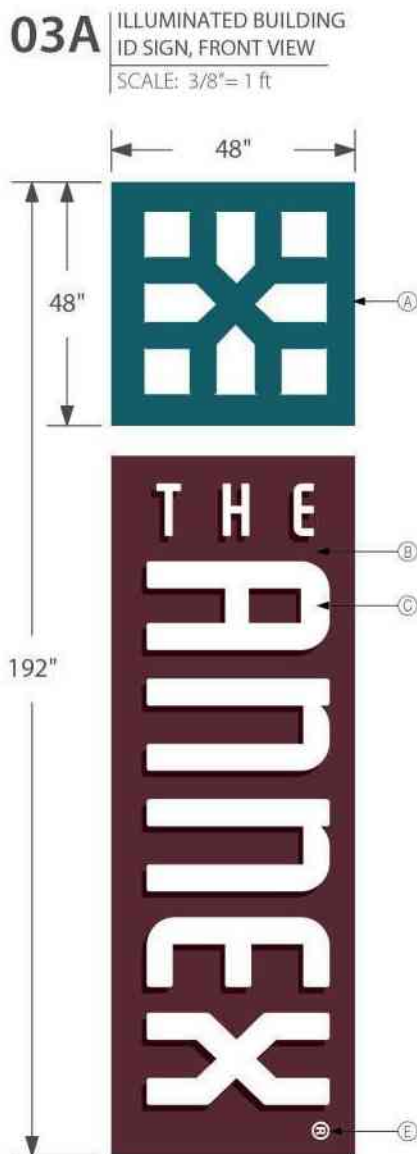
**02D** ILLUMINATED BUILDING ID SIGN, DAY AND NIGHT RENDERINGS  
SCALE: NTS



## SPECIFICATIONS:

- A 6" deep front lit logo to be painted (P5).
- Face from 3/16" white translucent acrylic with digitally printed vinyl overlay to match (P5). White portion of logo to be blocked out with white blackout vinyl. 1" trim cap to be painted (P5). Illumination from white LEDs.
- B 2" deep aluminum cabinet painted (P6) on all sides. Matte finish to minimize LED hotspots.
- C 5" deep front and halo illuminated letters from standard white coil. 1" standard white trim cap. White LED illumination. 2" white spacers. Back of letters from 3/16" clear polycarbonate
- D Photocell
- E White RTA cut vinyl

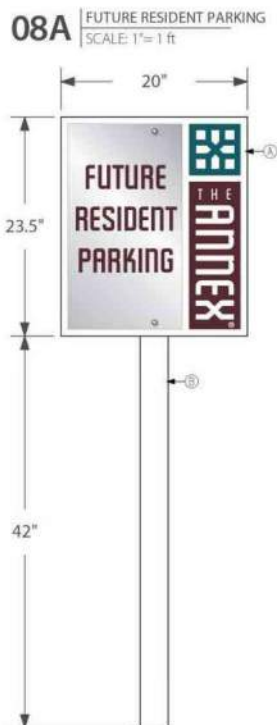
# The Annex® Exterior Vertical Sign



## SPECIFICATIONS:

- A 6" deep front lit logo to be painted (P5).
- Face from 3/16" white translucent acrylic with digitally printed vinyl overlay to match (P5). White portion of logo to be blocked out with white blackout vinyl. 1" trim cap to be painted (P5). Illumination from white LEDs.
- B 2" deep aluminum cabinet painted (P6) on all sides. Matte finish to minimize LED hotspots.
- C 5" deep front and halo illuminated letters from standard white coil. 1" standard white trim cap. White LED illumination. 2" white spacers. Back of letters from 3/16" clear polycarbonate
- D Photocell
- E White RTA cut vinyl

# The Annex<sup>®</sup> Leasing Office Parking Signage



## SPECIFICATIONS:

- A Direct print graphic on 6mm brushed silver polymetal
- B 6" x 3" square aluminum posts, painted white; flat white post caps

# The Annex® Window Vinyl



**Qty. 2**  
Single Sided



## SPECIFICATIONS:

A Direct print graphics on silver polymetal

B White RTA vinyl

## THE ANNEX GROUP® LOGO



### LOGO

The Annex Group® logos represent the brand publicly and express the brand ethos of the team.

It is important that the brand assets be used in the correct way and within the correct context.

### THE ANNEX GROUP, LLC

The Annex Group® logo is for the corporate team to utilize. The logo is a registered trademark and should always be displayed with the registered trademark symbol.



### CORPORATE WEBSITE:

[theannexgrp.com](http://theannexgrp.com)

Tags that link to website:

#whereyoumakeanimpact  
#wherewemakeanimpact  
#TheAnnexgrp

