

C:\BOKAP\REVIT_PROJECTS\ARCH_17012_CAVENDER_OFFICE-CENTRAL_v16.dgn 1/23/2020 3:44:43 PM

ASSEMBLY TYPES

VERTICAL ASSEMBLIES

WALL ASSEMBLY NO. 1 (SF-1)
CUSTOM FABRICATED STEEL GLAZING SYSTEM. PROVIDE 3/8" TEMPERED MONOLITHIC LOW IRON CLEAR GLASS PANELS AS SPECIFIED IN SECTION 088000.

WALL ASSEMBLY NO. 2 (SF-2)
THERMALLY-BROKEN ALUMINUM FRAMED SCREW SPLINE STOREFRONT SYSTEM W/ PRESSURE PLATE & SNAP CAP. INCLUDE HEAD RECEPTOR TO ACCOMMODATE DEFLECTION AS RECOMMENDED BY MANUFACTURER. PROVIDE 1" LOW-E GLASS AS SPECIFIED IN SECTION 088000.

WALL ASSEMBLY NO. 3 (WW-1)
THERMALLY-BROKEN, 2-SIDED CAPTURED ALUMINUM FRAMED SHEAR BLOCK WINDOW WALL SYSTEM W/ PRESSURE PLATE & SNAP CAP ON VERTICAL & HORIZONTAL MULLIONS. OUTSIDE GLAZED W/ 1" LOW-E GLASS AS SPECIFIED IN SECTION 088000. AT SPANDREL BETWEEN FLOORS, PROVIDE A SMOKE/GAS/FIRE CONTAINMENT ASSEMBLY (REFER TO ENGINEERING JUDGEMENT [04/A5.15](#) & [A0.15](#)).

WALL ASSEMBLY NO. 4 (CW-1)
THERMALLY-BROKEN, 2-SIDED CAPTURED ALUMINUM SHEAR BLOCK CURTAIN WALL SYSTEM W/ PRESSURE PLATE & SNAP CAP ON HORIZONTAL MULLIONS & STRUCTURAL SILICONE GLAZED VERTICAL MULLIONS. OUTSIDE GLAZED W/ 1" LOW-E GLASS AS SPECIFIED. WHERE CURTAIN WALL SPANS OVER AN OCCUPIED FLOOR, PROVIDE A SMOKE/GAS/FIRE CONTAINMENT ASSEMBLY (REFER TO ENGINEERING JUDGEMENTS [A0.15](#) & [A0.15](#)). PROVIDE SLIDING ANCHOR @ HEAD OF CURTAIN WALL AS REQUIRED FOR DEFLECTION CONTROL.

WALL ASSEMBLY NO. 5 (MP-1)
EXTERIOR FACE: 22 GAUGE, CUSTOM PAN-FORMED, FLAT-LOCK ZINC METAL PANELS (REFER TO ENLARGED ELEVATIONS FOR PROPOSED SIZES/JOINT PATTERN) W/ 4-SIDED CONNECTION TO PANEL CLIPS OVER HPDE VAPOR-PERMEABLE AIR/MOISTURE BARRIER TO BE FASTENED TO 5/8" FRT EXTERIOR PLYWOOD SHEATHING FACTORY-ADHERED TO 1" CLOSED CELL POLYISOCYANURATE BOARD INSULATION (LTTR=6) ATTACHED OVER 1" METAL Z-FURRING CHANNELS PLACED VERTICALLY @ 16" O.C. Z-FURRING TO BE FASTENED OVER FLUID-APPLIED, HIGH-TEMPERATURE, U.V. STABLE, VAPOR-PERMEABLE AIR/MOISTURE BARRIER APPLIED OVER 1/2" GYPSUM BOARD EXTERIOR SHEATHING.

CORE: 3 5/8" COLD-FORMED METAL STUD FRAMING @ SPACING PER ENGINEERED REQUIREMENTS. PROVIDE R-13 THERMAL BATT INSULATION WITHIN STUD WALL CAVITY.
INTERIOR: 5/8" GYPSUM BOARD (TYPE 'X' WHERE REQ'D.) - PAINTED (WHERE INDICATED)

WALL ASSEMBLY NO. 6 (MP-2)
METAL SCREEN @ ROOFTOP MECHANICAL
22 GA. 7/8" CORRUGATED, PERFORATED METAL PANELS FASTENED TO HSS 4 X 4 X 1/4" STEEL VERTICAL SUPPORTS (SPACED 5'-0" O.C.)

WALL ASSEMBLY NO. 7 (WD-1) BREEZEWAY FEATURE WALL
EXTERIOR FACE: 3 1/2" DEEP DLT PANELS ON 1" Z-FURRING CHANNELS @ 16" O.C. W/ CONTINUOUS 1" CLOSED CELL POLYISOCYANURATE BOARD INSULATION (LTTR = 6) OVER AIR/MOISTURE BARRIER FLUID-APPLIED TO 1/2" GYPSUM BOARD EXTERIOR SHEATHING.
CORE: 6" COLD-FORMED METAL STUD FRAMING @ SPACING PER ENGINEERED REQUIREMENTS.

WALL ASSEMBLY NO. 8 (BRICK-CLAD MASS WALL)
EXTERIOR FACE: MANUFACTURED BRICK (3 5/8" X 2 1/4" X 23 5/8") ON 1" Z-FURRING CHANNELS PLACED HORIZONTALLY AT 16" O.C. W/ CONTINUOUS 1" CLOSED CELL POLYISOCYANURATE BOARD INSULATION (LTTR = 6) OVER VAPOR-PERMEABLE AIR/MOISTURE BARRIER FLUID-APPLIED TO 1/2" GYPSUM BOARD SHEATHING. INCLUDE MINIMUM 1/8" PLASTIC SHIMS BEHIND Z-FURRING TO ALLOW FOR CONDENSATION DRAINAGE. PROVIDE MORTAR NET AT BASE FLASHING & SHELF ANGLE LOCATIONS. BAFFLE WEEPS @ 24" O.C. WITHIN BOTTOM COURSEING.

CORE: COLD-FORMED METAL STUD FRAMING @ 16" O.C. - REFER TO SECTION DETAILS (A5 SERIES) FOR STUD DEPTHS (THERMAL BATT INSULATION CAN BE OMITTED PER IECC MASS WALL REQUIREMENTS)
INTERIOR: 5/8" GYPSUM BOARD (TYPE 'X' WHERE REQ'D.) - PAINTED (WHERE INDICATED)

ALL MASONRY-CLAD WALL ASSEMBLIES TO COMPLY WITH 2015 IECC MASS WALL DESIGNATION FOR CONTINUOUS INSULATION.

HORIZONTAL ASSEMBLIES

FLOOR ASSEMBLY NO. 1 (MASS FLOOR - GROUND FLOOR PLAZA DECK)
STRUCTURALLY SUPPORTED CONCRETE PAVERS OR CONCRETE TOPPING SLABS ON SETTING BED (REFER TO LANDSCAPE) PLACED OVER FILTER FABRIC ON DRAINAGE MAT & PROTECTION COURSE LAID OVER 120 MIL COLD FLUID-APPLIED WATERPROOFING. WHERE SLABS OCCUR WITHIN CONDITIONED SPACE, PROVIDE MINIMUM R=6.3g SPRAY-APPLIED FOAM INSULATION TO THE UNDERSIDE (WITHIN GARAGE) PER MASS FLOOR REQUIREMENTS OF 2015 IECC (2013 ASHRAE 90.1).

ROOF ASSEMBLY NO. 1 (RA-1)
(2ND FLOOR BALCONIES THAT SERVE AS GROUND FLOOR ROOFS)
STRUCTURALLY SUPPORTED CONCRETE TOPPING SLABS PLACED OVER FILTER FABRIC ON DRAINAGE MAT & PROTECTION COURSE LAID OVER 120 MIL COLD FLUID-APPLIED WATERPROOFING. WHERE SLABS OCCUR OVER CONDITIONED SPACE, PROVIDE MINIMUM R=25g SPRAY-APPLIED POLYISOCYANURATE INSULATION. WRB TO WRAP OVER DRAINAGE PLANE (WITHIN SPANDREL CONDITIONS) AND LAP COLD FLUID APPLIED WATERPROOFING @ STRUCTURAL CURB @ EXTERIOR PERIMETER WALL CONDITION OF DECK/ROOF ASSEMBLY).

ROOF ASSEMBLY NO. 2 (RA-2, ABOVE 2ND FLOOR BALCONY)
3-PLY SBS MODIFIED BITUMEN MEMBRANE ROOFING W/ GRAY GRANULE CAP SHEET OVER 1/2" THICK COVER BOARD FASTENED TO MINIMUM R=25g RIGID BOARD INSULATION W/ FELT OR GLASS FIBER MAT FACER (FLAT & TAPERED TO INDUCE SLOPE). ROOF ASSEMBLY IS SUPPORTED ON HEAVY TIMBER FRAMING AND DOWEL LAMINATED TIMBER PLANK SLABS. INSTALL VAPOR BARRIER OVER WOOD STRUCTURE PRIOR TO ATTACHMENT OF ROOF INSULATION. AT ROOF-TO-WALL INTERSECTION, TERMINATE ROOF MEMBRANE FLASHING SHEET A MINIMUM OF 8" ABOVE ROOF LINE & TRANSITION TO WALL ASSEMBLY WRB W/ TWO-PIECE THROUGH-WALL COUNTER FLASHING.

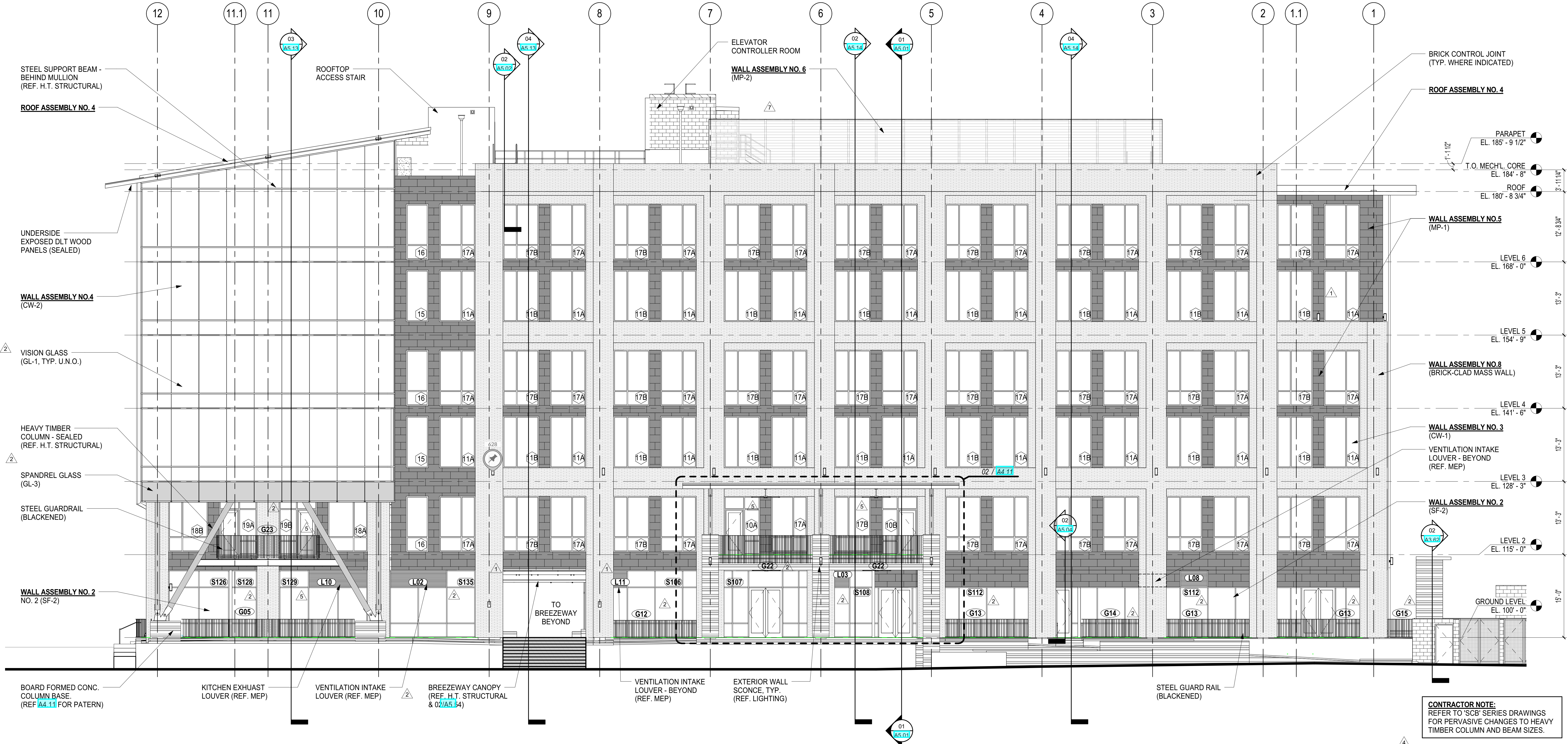
ROOF ASSEMBLY NO. 3 (RA-3)
3-PLY SBS MODIFIED BITUMEN MEMBRANE ROOFING W/ WHITE GRANULE CAP SHEET OVER 1/2" THICK COVER BOARD FASTENED TO MINIMUM R=25g RIGID BOARD INSULATION W/ FELT OR GLASS FIBER MAT FACER (FLAT & TAPERED TO INDUCE SLOPE). BOTH COVER BOARD & RIGID INSULATION ARE COMMON FASTENED TO ROOF DECK. ROOF ASSEMBLY IS SUPPORTED ON HEAVY TIMBER FRAMING AND DOWEL LAMINATED TIMBER PLANK SLABS. INSTALL VAPOR BARRIER OVER WOOD STRUCTURE PRIOR TO ATTACHMENT OF ROOF INSULATION. AT ROOF-TO-WALL INTERSECTION, TERMINATE ROOF MEMBRANE FLASHING SHEET A MINIMUM OF 8" ABOVE ROOF LINE & TRANSITION TO WALL ASSEMBLY WRB W/ TWO-PIECE COUNTER FLASHING.

ROOF ASSEMBLY NO. 4 (RA-4, TREEHOUSE)
24 GAUGE METAL STANDING SEAM ROOFING OVER 30 MIL SELF-ADHERED HIGH-TEMPERATURE MEMBRANE UNDERLAYMENT ATTACHED TO 1/2" THICK COVER BOARD FASTENED TO MINIMUM R=25g RIGID BOARD INSULATION W/ FELT OR GLASS FIBER MAT FACER. ROOF ASSEMBLY IS SUPPORTED ON HEAVY TIMBER FRAMING AND DOWEL LAMINATED TIMBER PLANK SLABS.

SOFFIT ASSEMBLY NO. 1 (SA-1, BELOW 2ND LEVEL @ EXTERIOR CONCRETE STRUCTURE CONDITIONS)
MINIMUM 4" (LTTR=6.8 INCH) SPRAY-APPLIED CLOSED CELL ICYNENE INSULATION OR MINIMUM 6 1/4" (LTTR=4 INCH) MINERAL WOOL BLANKET PINNED TO UNDERSIDE OF CONCRETE STRUCTURE WITHIN PANS ONLY. INSTALL 8 GAUGE GALVANIZED HANGER WIRE @ 48" O.C. MAXIMUM PRIOR TO APPLYING INSULATION. ATTACH 18 GAUGE, 1 1/2" STRUCTURAL PLASTER GRID MAIN BEAM & CROSS TEES @ 48" O.C. APPLY MINIMUM 40 MIL (WET, U.V. STABLE, FLUID-APPLIED VAPOR PERMEABLE AIR/MOISTURE BARRIER (NFPA 285 COMPLIANT) TO 1/2" GYPSUM BOARD EXTERIOR SHEATHING BENEATH PAPER-BACKED EXPANDED, SELF-FURRING METAL LATH & 3-COAT PORTLAND CEMENT PLASTER WITH INTEGRAL COLOR.

GENERAL NOTES - EXTERIOR ELEVATIONS:

- COORDINATE ALL LOCATIONS OF THROUGH WALL PENETRATIONS - FAN HOODS, LOUVERS, VENTCAPS, ETC. - WITH ARCHITECT & M.E.P. ENGINEER OF RECORD.
- REFER TO MATERIALS LEGEND FOR GRAPHIC DESCRIPTION/SCOPE OF EXTERIOR CLADDING.
- REFER TO SHEETS [A3.10](#) THROUGH [A3.13](#) FOR DOOR TYPES & EXTERIOR DOOR DETAILS.
- REFER TO SHEETS [A3.30](#) & [A3.31](#) FOR STOREFRONT, WINDOW WALL & GLASS TYPES.
- REFER TO SHEETS [A3.32](#) FOR LOUVER TYPES.
- REFER TO ENLARGED EXTERIOR ELEVATIONS FOR:
 - BRICK CONTROL JOINT & ZINC PANEL JOINT LOCATIONS
 - DIMENSIONS & INFORMATION NOT CLARIFIED IN THESE DRAWINGS
- APPLY LONYX GRAFFITI DEFENSE SEALER TO ALL EXPOSED EXTERIOR BOARD-FORMED CONCRETE WALLS, PLINTHS, COLUMNS & PLANTERS AS INDICATED BY SPECIFIC HATCH IN THE DRAWINGS.



01 ELEVATION - WEST
SCALE: 1/8" = 1'-0"

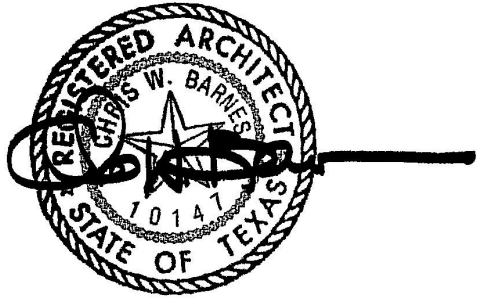


architecture | interiors | planning | graphics

303 Colorado St., St. 2575 | Austin, Texas 78701

Tel 512.687.0699 | Fax 512.687.1097

www.bokapowell.com



01.22.2020

OWNER

HIXON PROPERTIES INCORPORATED
315 E. COMMERCE STREET, SUITE 300
SAN ANTONIO, TEXAS 78205
210.225.3053

DESIGN ARCHITECT

LAKE/FLATO ARCHITECTS
311 THIRD STREET
SAN ANTONIO, TEXAS 78205
210.679.2308

STRUCTURAL ENGINEER

DANYSH AND ASSOCIATES
105 BILTMORE, SUITE 100
SAN ANTONIO, TEXAS 78213
210.341.5161

STRUCTURAL ENGINEER - HEAVY TIMBER

STRUCTURECRAFT
8279 RIVER WAY, DELTA, BC V4G 1G9
VANCOUVER, CANADA
604.940.8899

MEP ENGINEER

INTEGRAL GROUP
1711 E. CESAR CHAVEZ, SUITE C
AUSTIN, TEXAS 78702
512.333.0875

LANDSCAPE ARCHITECT

HOCKER DESIGN GROUP
913 DRAGON STREET
DALLAS, TEXAS 75207
214.915.0910

LIGHTING DESIGN

SCOTT OLDNER LIGHTING DESIGN
5331 E. MOCKINGBIRD LANE, STUDIO 304
DALLAS, TEXAS 75206
214.414.1030

CIVIL ENGINEER

PAPE-DAWSON
2000 NW LOOP 410
CASTLE HILLS, TEXAS 78213
210.375.9000

project

CAVENDER OFFICE BUILDING
711 BROADWAY STREET
SAN ANTONIO, TEXAS 78205

The drawings and written material herein constitute original work of the architect, and as intellectual property and instruments of service, are subject to copyright and may not be reproduced, distributed, published or used in any way without the express written consent of the architect.

original issue

ISSUE FOR CONSTRUCTION 05.30.2018

revisions

1. WPCR 01	06.20.2018
2. WPCR 02	09.14.2018
3. WPCR 04	01.23.2019
4. WPCR 05	04.05.2019
5. WPCR 06	05.31.2019
6. WPCR 07	06.28.2019
11. ASI #10	10.18.2019
14. ASI #14	01.22.2020

title

EXTERIOR ELEVATIONS - WEST

project number 17012.100

date 05.30.2018

sheet

A4.02