



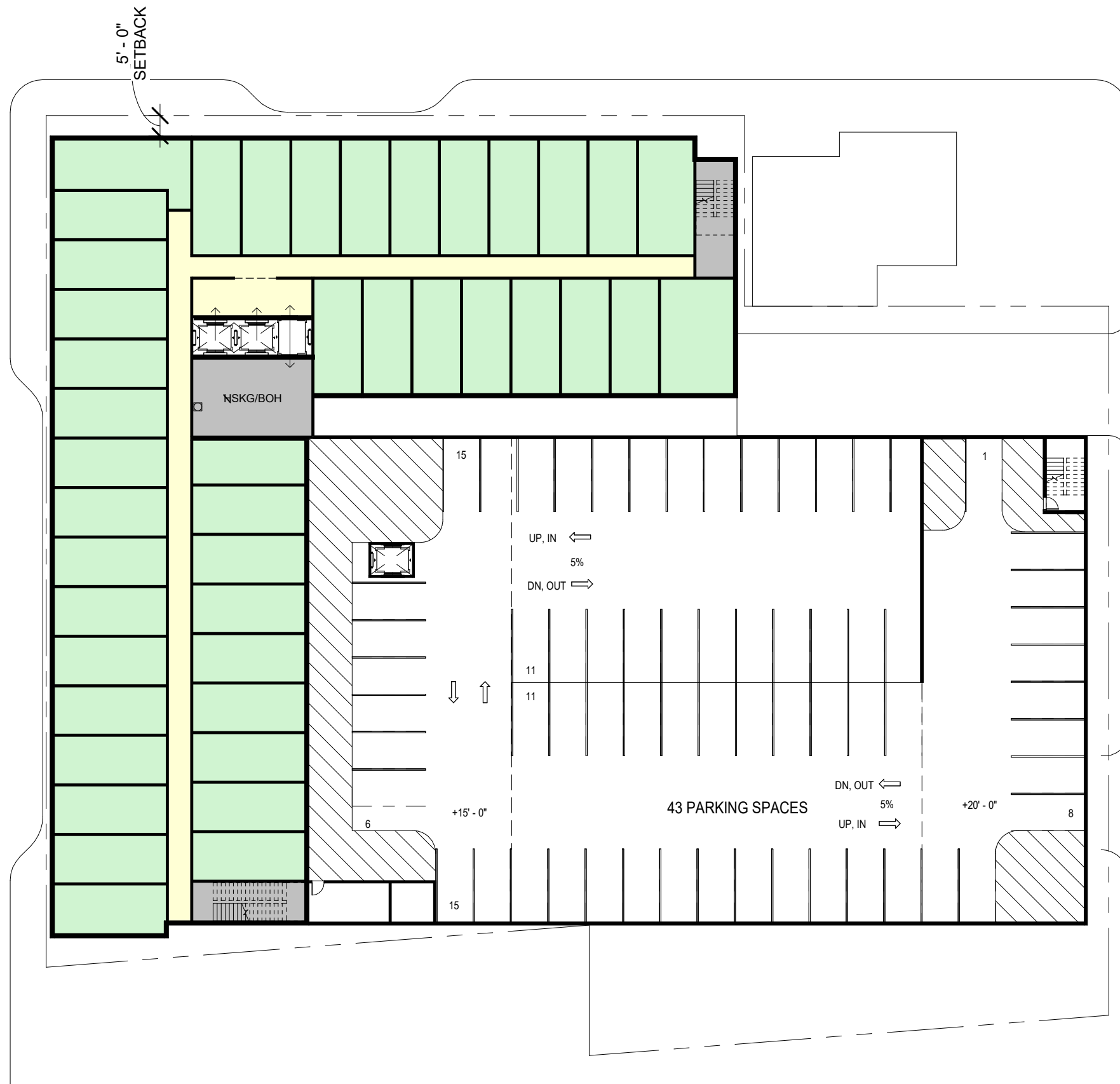
ROOM MATRIX

LEVEL 2 = 39 (-3 AT FITNESS)
 LEVEL 3 = 43 KEYS
 LEVEL 4 = 43 KEYS
 LEVEL 5 = 43 KEYS
 LEVEL 6 = 43 KEYS

43 KEYS/FLR - 1.5 BAYS AT LEVEL 2
 FITNESS=211 KEYS TOTAL

TYPICAL AC GUESTROOM: 11'-6" X 27'-6"





ROOM MATRIX

LEVEL 2 = 39 (-3 AT FITNESS)
 LEVEL 3 = 43 KEYS
 LEVEL 4 = 43 KEYS
 LEVEL 5 = 43 KEYS
 LEVEL 6 = 43 KEYS

43 KEYS/FLR - 1.5 BAYS AT LEVEL 2
 FITNESS=211 KEYS TOTAL

TYPICAL AC GUESTROOM: 11'-6" X 27'-6"



